



Cromer Courier

CROMER CAMPUS NEWSLETTER

Respect • Responsibility • Success



/cromercampus



#cromercampus



@cromercampus

<http://www.nbsscromer-h.schools.nsw.edu.au>

nbsccromer-h.school@det.nsw.edu.au

Telephone: 9981 1155

120 South Creek Road CROMER NSW 2099



LOTE French Cafe Experience (P6)

FROM THE PRINCIPAL

Term 2 2022



By **JUSTIN HONG**
Principal
NBSC Cromer
Campus

I hope you enjoy this term's edition of our school newsletter. Our amazing students and teachers have achieved so much this term - concerts, competitions, Quadfest, SRC led mufti day, sporting achievements, excursions, primary school enrichment activities and most importantly the teaching and learning has continued. This term we have had lots of rain but no major weather events and except for two industrial stoppages the teaching and learning at our school has continued all term.

I must acknowledge the incredible work of our P&C who recently ran a highly successful evening event at school involving Dr Kristy Goodwin who spoke to parents about their 'Screenagers'. The school works in close partnership with our parent community and I would like to sincerely thank the P&C and especially our president Mrs Jackie Reavie and her team but also every parent who turned up and supported the event. Based on the overwhelming success of the night I am sure we will be seeing many more of these types of events in our future.

IN THIS ISSUE

Yr 7 & IS Senior Science P8



IS Sports Achievements P10



Quadfest P14



CAPA Music Ensembles P16



Info for Parents - School Bytes P4

Project Penguin P5

Library News P12

Sport Report P20

Cromer Campus Primary

Enrichment Program P22

Give Blood in Dee Why P24

Half Yearly Reports and Parent Teacher Nights

Today you will receive your child's half yearly report and very early next term we will be holding our annual parent teacher nights at the school. Details for booking interviews will be sent out early next term. For your diaries the dates for these nights are.

- Thursday 28th July 2:30pm – 7:30pm (student's surname A -G)
- Tuesday 2nd August 3:30 – 7:30pm (student's surname H-O)
- Thursday 4th August 2:30 – 7:30pm (student's surname P-Z)

Staffing at Cromer Campus

Like all industries and professions, we have been impacted by staff shortages and we have had some classes minimally supervised throughout the term. Our staff have done everything they can to minimise disruption, which has included taking extra lessons and supervising classes for absent colleagues so that students can continue with their assigned class work. Wherever we can we have spread this across the school so that the same classes are not always impacted. We also endeavour to place trained teachers on classes that need covering. For example, an English teacher, if available, covers an English class. I myself have stepped back into the classroom to cover a Year 8 science class. Next term we will be focussing on minimising any disruption to Year 12 as they undertake their final term of school in preparation for the HSC. Similarly, Year 11, who will be preparing for their final Year 11 assessments/exams are also our highest priority. If a Year 11 or 12 teacher is absent, we will endeavour to replace that teacher with a trained teacher when one is available. This commitment will minimise time spent in the library by senior classes and maximise face to face teaching time in this crucially important term for our seniors.

Our school has been identified as a priority school for teacher recruitment. I have just employed a part time Food Technology teacher who will be joining us next term. This may allow us to return some of the classes in food technology that were removed from the timetable at the beginning of this term and/or replace untrained teachers who are currently teaching food technology. I have been unable to find a computer, wood or textiles teacher but as a priority school those positions will be readvertised early next term and will include a \$20,000 sign on bonus. I hope that this will attract some more great teachers to our school. Once this occurs, we will be able to broaden our curriculum offerings to our students in those key learning areas.

Focussing on the Future and the Many Positives

It is often too easy to miss the many positives due to overwhelming bad news we receive every day when we watch the news on TV, or turn on the radio, or these days look at our mobile phones. The great news is in this newsletter. It is full of evidence that school has returned, teaching and learning is continuing, and all school events are back on. Our school is continuing to grow, the results and learning that students are achieving is also continuing to grow and the events of the past few years have strengthened our school in so many areas. One of our key goals is to provide a high-quality education to all our students in a supportive, caring and inclusive learning environment. This goal has not changed. I hope that this newsletter, about our great school and the education occurring within it, has given you so much needed positive news about your school and your child's education and future.

Justin Hong
Principal



Dee Why Mobile Blood Donor Centre

Open in July - please go to page 24 for location, opening dates and times.

Cromer Campus Student Finalist in Art Competition

A huge congratulations to Daniella Piskor of Year 11 who has been selected as a finalist in the prestigious Northern Beaches Environmental Art and Design Prize for her beautiful painting titled "Home".



Staff Band at Quadfest



School Bytes

Cromer Campus is now using School Bytes for Excursions, Sporting Events, Sports Selections & Fee payments.

Online permission notes for excursions are sent directly to parents via email. When parent permission is required for a student activity, such as an excursion, an email will be sent to you, with a link to open the secure online permission form.

The online form will contain information about the activity or excursion, as well as a section for you to complete and sign (with your mouse or finger). If the activity involves a cost, the online form will show a make online payment button.

Online permission notes include a link to a secure payment site via the Westpac Parent Online Payment (POP) system (Visa and Mastercard credit/debit cards accepted).

Information submitted by you will be stored securely for the school to review. Your individual response can only be accessed by school staff, due to the sensitive nature of the information you provide.

There is a due date for all events. Permission notes and payments are required by this date. This is to book tickets for events, buses etc. The due date may be several weeks before the excursion for the abovementioned reasons. School Bytes eliminates the need for paper notes and cash payments. It can all be done online.

What do you need to do to prepare for the change?

- You do not have to sign up or register with School Bytes.
- You do not have to download an app.
- ***You do need to ensure your email address and contact details up to date. You don't want to miss critical information being sent to you.***
- ***Monitor your inbox for communication we send to you.***
- ***Ensure emails sent to you from noreply@mail.schoolbytes.education are not marked as spam/junk in your email system.***

Changes you can expect

- The student's Statement of Account and payment reminders will be sent directly to parents/carers via email.
- Emails will be sent to you from noreply@mail.schoolbytes.education.
- The student's Statement of Account email will include the make a payment button that will take you to the school's online payment portal.
- The make a payment button will allow you to pay securely, quickly and easily via credit or debit card (Visa and Mastercard only).

Parent Guide to School Bytes

<https://support.schoolbytes.education/hc/en-us/categories/4414087688847-PARENT-GUIDES>

Project Penguin

Year 10 students have been mentoring Year 4 students from Brookvale Primary School to develop a project to protect our local penguins residing in Little Manly. Our students have been proactive at engaging the Year 4 students, developing creative and critical thinking skills and developing positive community relationships.

Whilst it was impossible to select one mentor who excelled in their role above others, the teachers at Brookvale PS said that our cohort was the best they had ever seen. Poppy Pickering and Issy Raj-Seppings were presented with a voucher for the zoo and a certificate for their incredible efforts. Issy was also Master of Ceremonies at the Taronga Zoo Presentation Event in Week 10.

I am incredibly proud of all of our Year 10 students for their participation in this fantastic mentoring and environmental project and look forward to seeing the winning projects displayed at Warringah Mall from Friday 1st July.



LOTE FACULTY

French Cafe Experience



LOTE FACULTY

French Cafe Experience



SCIENCE FACULTY

7B Living Things Experiment



The gas experiment was really fun because it went up in flames and you could feel the heat.

- Rihanna

Was cool!

- Lucy

We got to see a big explosion type of fire and it was exciting and fun.

- Jenny

An incredible sight to see!

- Soumya

We could feel the heat from the other side.

- Mia & Saraya



SCIENCE FACULTY

This term Year 7 were learning about Living Things, so we grew snow peas. We got to work in groups and it was fun.
- Alana

How the plants grew faster in the dark was amazing!

- Spenser



I liked doing the plant experiment, it was fun.
- Sophie

I learnt a lot - Hine

I liked the day when one of the plant we thought was dead, finally grew.
- Layla

We got to watch plants grow in different environments to see what happens.
- Mia & Saraya

Integrated Studies Science - Seniors

This semester in practical lessons, scientific reactions are being observed. Today we grew a fire snake.

Some of the comments from the students –



Smells nice.

Wow!

So fun!

Amazing!

Spongy!

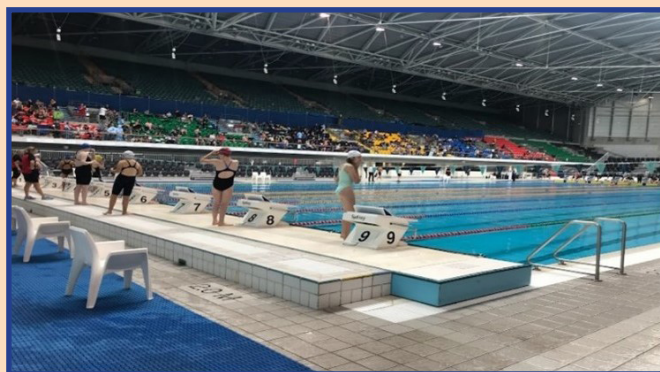


INTEGRATED STUDIES FACULTY

IS Sports Achievements

The year started strongly with the NBSC Cromer Swimming Carnival closely followed by the Athletics and Cross Country carnivals. At all three carnivals, Integrated Studies students competed with great spirit and sportsmanship. Some of our students went on to represent our school at Zone, Sydney North, and we even had a student represent our school at Nationals!

What is especially heart-warming about our Integrated Studies students competing at NBSC Cromer sports carnivals is the overwhelming support shown to our students when they are competing. There is simply nothing like finishing a race to rapturous cheers and applause from students, teachers, and spectators alike!



This term we also participated in two externally organised events, 'Come-and-Try Athletics Day' organised by NSW Sports Inclusion and a Variety Active Inclusion Sports Day. These days were aimed to give students the opportunity to experience athletics in an enjoyable, non-competitive setting. Our students had the chance to participate in a variety of track and field events. Highlights were wheelchair basketball and sitting volleyball.



It was encouraging to see students actively participating, trying new activities and having fun with their peers. Future events are in the planning stage including the next Variety Active Inclusion Sports day at Ryde Aquatic Centre in Term 3 and the NSW Inclusive Sport - Multi Sports day in Term 4.

INTEGRATED STUDIES FACULTY

IS Sports Achievements



NSW Sports Inclusion also ran a Boccia Competition this term. NBSC Cromer Integrated Studies entered a team of six students to compete in the preliminary Sydney North event. Our students won this event and therefore qualified for a spot in the Sydney North Grand Final held on the Central Coast. Our IS team came up against some very stiff competition at this event and they did themselves proud. We are looking forward to competing in this annual event again next year.

These sporting opportunities would not be possible without the support of our fabulous PE Faculty and we are so grateful to them for always looking out for activities and events that our Integrated Studies students can participate in. Congratulations to every single student for participating and trying new activities and we are looking forward to future events during Semester 2.



What's New in the Library @Cromer Campus

Our library space is used by all students across Cromer Campus.

The Mezzanine Level has two purposes: firstly, it houses our fiction collection for the entire student body. We work hard to maintain a relevant and up to date collection and are currently building our Graphic Novels section as this genre grows in popularity. We currently have everything from Spider-Man to Shakespeare to The Great Gatsby. We have indigenous graphic novels, LGBTQI+ graphic novels, non-fiction graphic novels and are excited about some of the new titles coming in for next term. We always encourage the students to tell us what it is they would like to read and do our best to accommodate them.



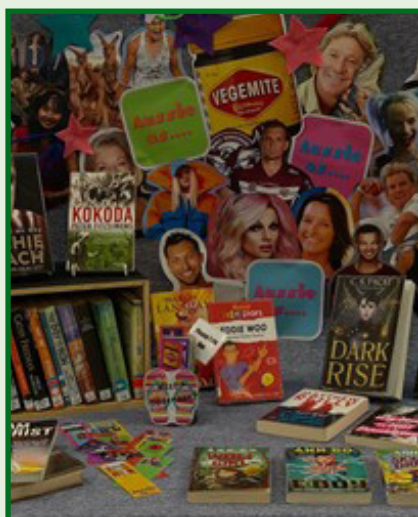
The second important purpose of this area is as a Senior Study Space, open to seniors all day for quiet study and as a collaborative workspace. In response to a recent survey of our senior students, we have added the newest study resources and some plants, placed some inspirational quotes around the place and encouraged other users of the area to keep the noise down and be mindful of our seniors when in the library.

The Lower Library is primarily our junior space and houses our non-fiction collection. New to this area this term is a breakout study space with four desktop computers and study resource materials. On the other side of the lower level we have couches in a dedicated quiet reading space for all students. We also hold our book club meetings here and these spaces are available at recess and lunchtimes. We have a code of conduct in the library which we expect all our students to live up to and which keeps this space a welcoming and safe place for all.

A New Initiative Between Cromer Campus Library and Northern Beaches Library Service

Over 110 Cromer students have recently signed up to Northern Beaches Library Service to take advantage of all the resources offered by our local council libraries.

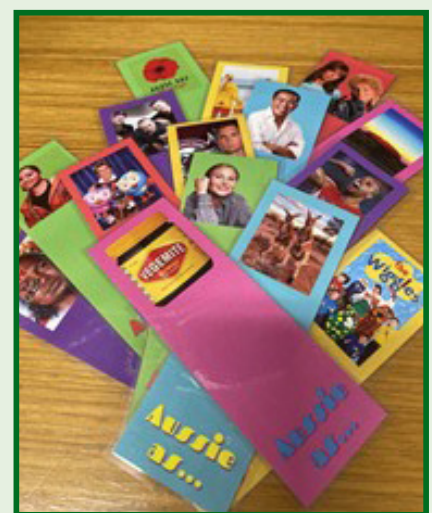
Liz and Freya from Northern Beaches Libraries came to Cromer Campus Library to present the students with their cards and to talk about the additional services available from the six Northern Beaches Libraries. Membership gives our students free, easy, online access to [eBooks](#) and [eAudiobooks](#) which means there is no need to physically go into the Library to collect or return. It opens a new avenue of borrowing for our students catering to many varied needs. Membership is free and available via the Northern Beaches Library Service Website.



This Term's Display

We have had many displays this term which are popular with students and offer a range of reading options and engagement under different banners. We started with our "Aussie as..." display featuring all things Australian. Here we looked at books about Anzac Day, sporting heroes, musicians, celebrities, and all things "Aussie".

This display came with its own bookmarks available for all the students to take home with them.



What's New in the Library @Cromer Campus



We also celebrated World Bee Day, National Sorry Day, and Pride Month this term.



Recommended Reads Board

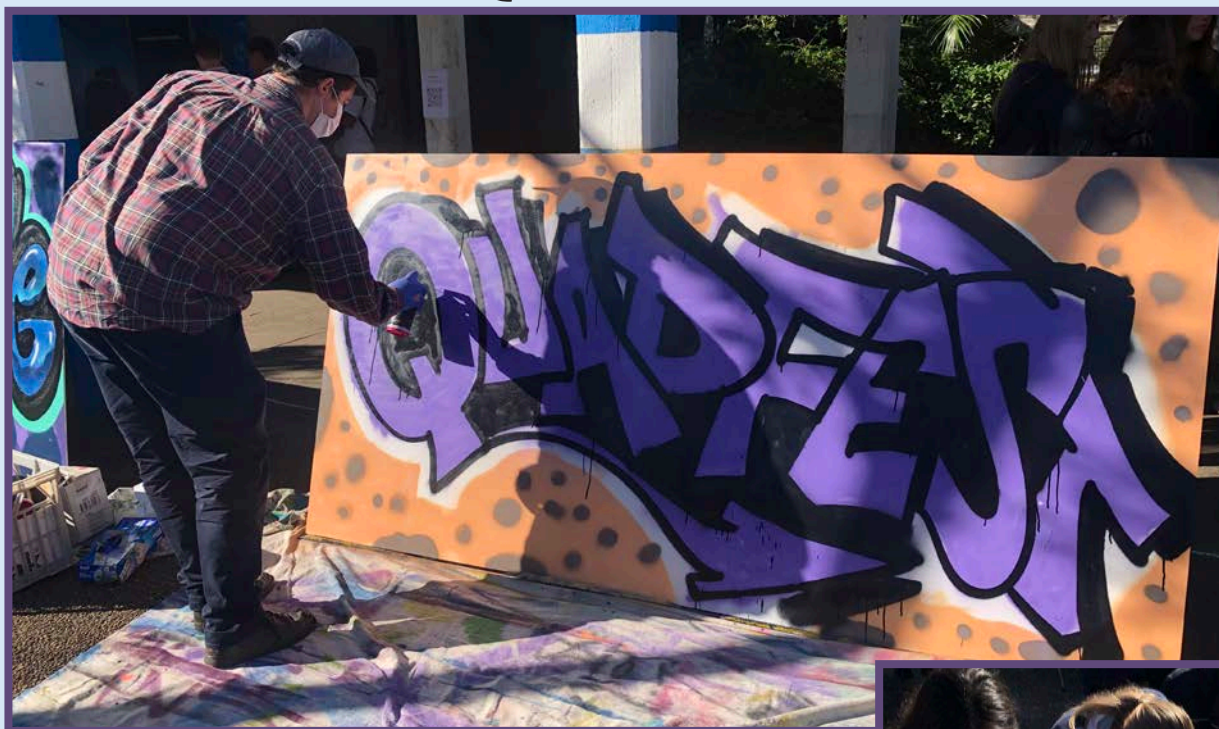
As we add new titles to our collection, we are also updating our recommended reads board which can be found as you enter our Library. This is a great reading resource for students offering suggestions of books across a wide range of genres, including Historical Fiction, Horror, Friendship, Funny Stories, Fantasy, Movies vs Books, Romance and The Classics. If there is a particular type of book you like to read, come and see us and we can show you what we have on offer.

And the final word from the Library.....

follow us on Instagram@ cromer_library

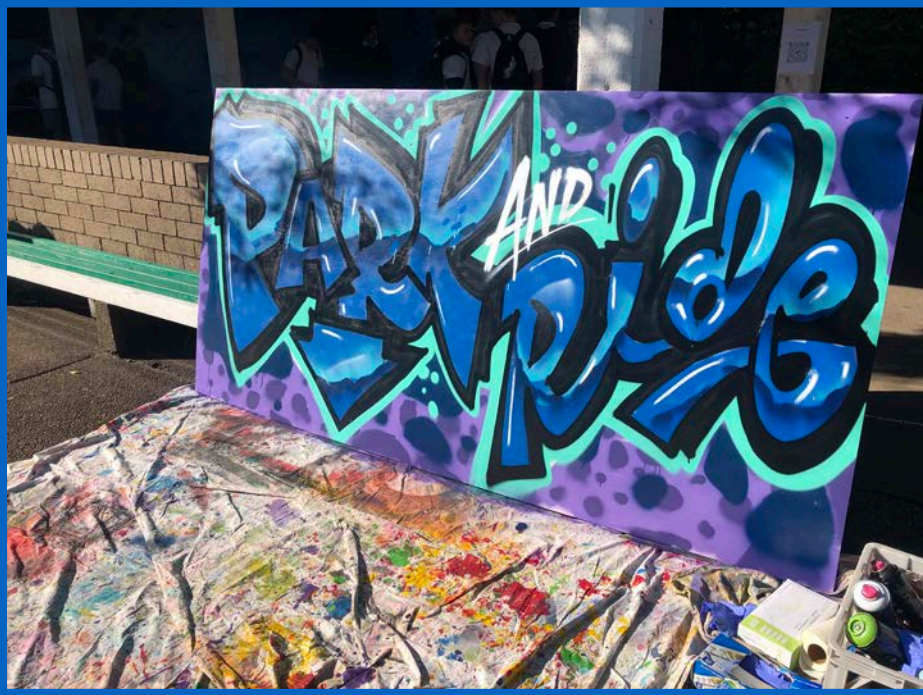
CAPA FACULTY

Quadfest 2022



CAPA FACULTY

Quadfest 2022



CAPA FACULTY - MUSIC

Northern Beaches Instrumental Festival - Concert Band



Northern Beaches Instrumental Festival - Stage Band



CAPA FACULTY - MUSIC

NSSWE Autumn Concert



NSSWE Winter Concert



CAPA - ENSEMBLES EVENING

Choir



Concert Band & Year 7 Singers



Junior Guitar Ensemble



CAPA - ENSEMBLES EVENING

Senior Guitar



Junior Contemporary



Strings



PDHPE FACULTY

Sport Report

Term 2 has been busy for Cromer students with several school, zone and co-curricular activities taking place. We kicked off the term with grade sport trials in Weeks 1 & 2. With the increasing student population in Years 8, 9 and 10, securing a spot in a grade sport team was tougher than ever. So far, our grade sport teams have enjoyed a very successful start to the season with several teams posting big wins. Special mention must go to the coaches and players of the girls senior netball team and boys senior touch team, who are yet to be defeated. We look forward with great optimism and hope to see Cromer teams in action come finals time.

Knockouts & Gala Days

The knockout season has ramped up since the commencement of Term 2 and we have seen some outstanding results from several of our knockout teams. Our junior and senior girls netball, junior boys soccer and senior softball teams have competed against schools across Sydney, with the senior softball team making it all the way to the semi finals before going down to Kariong Mountains High School. The interest and participation in knockout teams has been amazing this year and we encourage students to keep this up as more sports become available.



In addition, we recently saw several stage 4 and 5 students represent Cromer at the All Schools Touch Competition in St Marys. Cromer entered three teams made up of Year 7 & 8 girls, Year 7 & 8 boys and Year 9 & 10 boys which competed against both private and public schools across the entire Sydney metropolitan area. With Covid cancelling these Sydney wide competitions over the past two years it was great to have Cromer represented on the All Schools' stage once again.

Special mention to the Year 9 and 10 boys team which defeated Trinity Grammar School in a thrilling three man drop off to secure a spot in the semi-final. They would eventually go down in the semi but did themselves and their school proud. Thank you to Mrs Tavita and Miss Wishart for organising these events and to the parents for their assistance with transport and support on the day.

PDHPE FACULTY

Sport Report



In Week 4 of Term 3 we will see the return of the annual Warringah Zone Year 7 Gala Day. This will see the entire Year 7 cohort represent Cromer in a variety of sports including soccer, touch, netball, basketball and frisbee. Students will be given the choice of these, and training will take place in the first few weeks of Term 3. Parents should expect to receive permission and information notes in the coming weeks.

Zone and CHS Carnival Days

Both the Zone Athletics and Cross-Country carnivals recently took place at the Sydney Academy of Sport and Warringah Rugby Park respectively. Cromer was well represented in both, and these carnivals once again highlighted the athletic talent across all years at Cromer. Special mention must go to Aylah Marshall-Witte winning the 12 years cross country and Aria Girven, Mia Emery and Alex Moore who also secured a place at CHS with strong performances - congratulations!

Cromer students had another successful outing at the Zone athletics carnival with several strong performances. Due to weather conditions the carnival was forced to run track events only, meaning field athletes will be nominated by their school to attend the Sydney North Carnival.

Cromer Campus Primary Enrichment Program

It has been so lovely to welcome our Year 5 and 6 students back to the school this semester. Our program is back in full swing and we are enjoying the challenges, creativity and opportunity it brings.



Our unit on Surrealism moved from artists to poets and then to creating our own culinary treats that challenge the perception of the diner. Our students made pot plant cakes and breakfast treats that in reality were vastly different to egg and chips.



Our "Rock On" unit shifted us straight into geology mode, studying the formation of rocks and fossils and the creation of crystals and their shapes. We got hands on with rock identification and formed and studied magnesium sulphate crystals.



Cromer Campus Primary Enrichment Program



Our logical thinking and the brain workshop had us identifying the different areas of the brain and how they control the body. We then demonstrated our newly acquired knowledge with a brain dissection. Students looked at the benefits of logical and lateral thinking puzzles and challenged their abilities in teams to escape the classroom.....boy, it was FUN!



I commend the students this semester and look forward to working with more of your talented children next term.



Give life. Give blood in Dee Why.

Dee Why Beach Car Park
4 to 10 and 19 to 24 July



Monday	1 to 6 pm
Tuesday	1 to 6 pm
Wednesday	1 to 6 pm
Thursday	1 to 6 pm
Friday	9 am to 2 pm
Saturday	9 am to 2 pm
Sunday	9 am to 2 pm

 **give blood**

No knives at school – parent factsheet

Health and Safety Directorate

There is no good reason to bring a knife to school.

NSW now has the toughest knife laws in Australia. As a parent, you need to be aware of these laws, as you can also be charged if you allow your child to carry a knife.

No knives allowed at school under any circumstances

If a student has a knife at school the principal may call the police.

The student may be expelled or suspended immediately. Possessing a knife includes your child simply having one in their bag or locker. Having a knife for self-protection is also illegal. If you are concerned about your child's wellbeing or safety, contact the principal.

Tough penalties apply for children convicted of knife offences, including gaol sentences of up to 25 years if someone is injured with a knife during an assault.

Every child has the right to feel safe and secure at school. There is no good reason for a child to ever have a knife at school.

If you want to talk about children and knives at school, please contact the principal.

What kind of knives are prohibited?

As school policy is designed to keep all students safe, no type of knife is allowed at school. That means no butter knives or fruit knives in lunchboxes, or knife tools for craft purposes.

Flick knives, ballistic knives, sheath knives, push daggers, trench knives, butterfly knives and star knives are all prohibited.

Your child cannot bring to school any item that can be used as a weapon (such as a chisel).

In lessons requiring the use of knives, for example cooking or trades, your child's teacher will supply and supervise the use of the tools.

There are some senior subjects, such as hospitality, where children may be required to have their own knives.

Your child's school will advise you about these courses and the procedures for carrying knives legally to and from school.

The law makes parents responsible

You need to make certain your child is aware of the school's rules and the State laws about knives.

If you allow your child to carry or possess a knife at school or in a public place, you can be charged.

The police can search any child they suspect of having a knife. They can confiscate any dangerous object they might find during the search.

Your child must comply with such a police search, or they may be arrested and charged.

It is also illegal for anyone to sell a knife to anyone who is less than 16 years old

I respect and acknowledge Aboriginal people as the traditional custodians of the lands and waters on which we work and live

Reporting retailers of illegal nicotine e-cigarettes

Electronic cigarettes or e-cigarettes are battery operated devices that heat a liquid (or e-liquid) to produce a vapour to inhale. Using an e-cigarette is sometimes called 'vaping'.

E-cigarettes come in many shapes and sizes and can be made to look like everyday items including highlighters, pens or USB memory sticks. E-liquid contains a range of chemicals or flavours, and often contains nicotine.

In NSW, the sale of e-cigarettes and e-liquids that contain nicotine is illegal. Selling tobacco or e-cigarettes to minors is also illegal. NSW Health is seeing an increase in the sale of nicotine containing e-cigarettes, including to minors.

NSW Health takes non-compliance with tobacco and e-cigarette laws seriously and NSW Health officers undertake inspections of retailers to ensure they are complying with the laws.

If you think a retail store is selling e-cigarettes that contain nicotine, or selling any tobacco or e-cigarette products to minors, please report it to NSW Health by completing the online reporting form: <https://www.health.nsw.gov.au/tobacco/Pages/let-us-know-reports-complaints.aspx>, or by calling the Tobacco Information Line on 1800 357 412.

Further information on e-cigarette is available on the NSW Health website at: www.health.nsw.gov.au/tobacco/Pages/e-cigarette-young-people.aspx

Cromer Campus P&C Association

Parents and Carers please join our **TEAMAPP** to ensure you are across all news and events and have quick links to resources such as uniform shop, parent portal, newsletters and Flexischools.

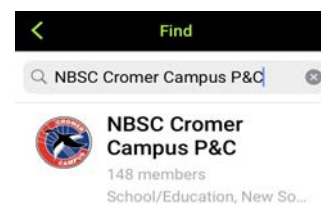
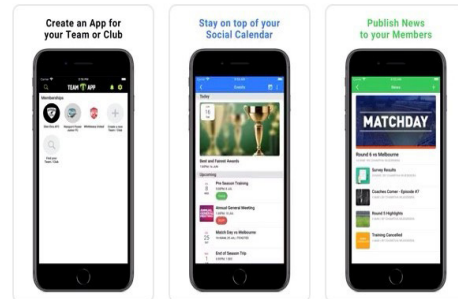


Team App
Sports Team...
★★★★☆ 7.1K

OPEN

On your iPhone do the following:

1. Go to the APP STORE
2. Download TEAMAPP
3. **SIGN UP**
4. **FIND YOUR TEAM** - NBSC Cromer Campus P&C
5. Join, and choose the YEAR groups that child/ren belong to, plus any other groups of interest



Shop Hours:
Tuesday: 8:00am – 12:00pm
Thursday: 12:00pm – 4:00pm

NBSC Cromer Campus Uniform Shop

Coivd-19 Uniform Shop Operation.

Daylight Uniform Shop will operate under normal shop hours.

Cromer Campus is promoting Online orders and student purchases only. Online Ordering is via

<http://daylightsportswear.com/cromer/>

Please have your student bring a copy of the Online Order to the uniform shop for collection
Or

Have the student bring your order form to the Uniform shop to be processed and collected.

		<u>QTY</u>	<u>Size</u>
Girls			
Junior Girls White Blouse/navy Piping	32.00		
Senior Girls Sky Blouse	30.00		
Junior Girls Tartan Skirt	50.00		
Senior Girls Navy Skirt	50.00		
Stretch Navy Slacks	39.00		
Boys			
Senior Boys Shirt	32.00		
Junior/Senior Grey Elastic Waist Shorts	30.00		
Junior/Senior Grey Elastic Waist Pants	35.00		
Junior Boys White Polo	28.00		
Senior Sky Polo	28.00		
Unisex			
School Jacket (limited stock – discontinued item)	60.00		
Softshell Jacket	72.00		
V -Neck Sloppy Joe	38.00		
Jumpers			
Wool Jumper	70.00		
Sports			
Sport Shorts	30.00		
Trackpants	45.00		
Sports Polo			
	35.00		
Others			
White Socks Regular x 5	20.00		
School Tie	20.00		
Black Winter Stockings	10.00		
Dark Navy Winter Stockings	10.00		
New School Cap	12.00		

NBSC Cromer Campus Mobile Policy 2022



NBSC CROMER CAMPUS

Use of Mobile Communication Devices and Online Services Procedure (*Mobile Communication Devices include mobile phones, smart watches etc*)

Purpose

This procedure guides student use of mobile communication devices and online services at school.

Our school acknowledges that students may want to bring a mobile communication device to school for a variety of reasons.

Our school also recognizes the harm that maybe caused if used inappropriately and that we need to support our students to use mobile communication devices in safe, responsible and respectful ways.

Scope

This procedure provides a consistent framework for the use of Mobile Communication Devices in our school. It sets out shared responsibilities of school staff, students and parents /carers. It also provides a framework to manage potential misuse of mobile communication devices.

This procedure covers student use of Mobile Communication Devices and online services in school related settings, including on school grounds, at school related activities, (i.e. school excursions etc) and outside of school where there is a clear and close connection between the school and the conduct of students.

Our School's Approach.

Students are discouraged from bringing mobile communication devices to school.

Mobile communication devices are not used or required in any classroom for any learning activities. BYOD, (i.e. laptop computers) are used for these purposes.

If a student chooses to bring a mobile communication device to school, the student is responsible for ensuring the phone is switched off and stored in their school bag during all scheduled activities. This will include classes, incursions, assemblies, year meetings and study periods.

Students who bring mobile communication devices to school do so at their own risk. The school will not accept any responsibility for the loss or damage to mobile communication devices.

Harmful effects of inappropriate mobile communication device use include:

- Lack of student engagement in learning tasks
- Loss of learning opportunities
- Bullying, intimidating or otherwise harassing through SMS or text messaging or through photographic, video or other data transfer systems available on the phone
- Recording of conversations without the knowledge and permission of those involved in the conversation
- Downloading or accessing inappropriate material on the internet
- Filming of any physical interactions between students that occur during the school day or to and from school

Consequences for Inappropriate Use

Consequences may include, but are not limited to:

- Mobile communication device being confiscated. (the device is stored in the School Office and collected at the end of the day)
- Letter home to parents
- Phone call to parents
- Parents called to school for an interview with the student present
- Classroom isolation

NBSC Cromer Campus Mobile Policy 2022 (Continued)

- Application of the school's Welfare and Discipline Policy

For detailed information regarding the school's procedures on managing mobile communication devices see Appendix 1,2,3 (attached)

Contact between students and parents / carers during the school day.

Parents / carers:

Parents and carers are expected to only contact their children via the School Office.

Students:

If a student needs to make a phone call during the day, it must be during the scheduled breaks of recess or lunchtime.

Responsibilities and Obligations:

Students:

- Mobile communication devices are off and away all day
- Respect and follow the school procedures and the actions taken by staff
- Be responsible and respectful users of mobile communication devices and online services and support peers to be the same
- Communicate respectfully with peers, school staff and the school community.

Parents / Carers

- Support the implementation of the school's procedures, including its approach to resolving issues
- Recognize the role they play in educating their children and modelling the behaviours that underpin the responsible and respectful use of mobile communication devices.
- Take responsibility for their child's use of mobile communication devices and online services at home
- Monitor your child's mobile communication device use and online presence
- Switch off mobile communication devices when attending school functions or meetings.

Principal and Teachers

- Establish whole school expectation of mobile communication devices: off and away all day
- Educate students of inappropriate use of mobile communication devices
- Respond to and report any breaches and incidents of inappropriate mobile communication devices use. This includes:
 - reporting the creation, possession or distribution of indecent or offensive material to the Incident Support and Report hotline
 - working with the eSafety Commissioner to resolve cases of serious on line bullying or image based abuse
- support parents and carers to understand strategies that support responsible and respectful use of mobile communication devices

Non- Teaching Staff

- be aware of the school's procedures in relation to mobile communication devices
- report any inappropriate use of mobile communication devices to the principal, school Executive or school staff they are working with.

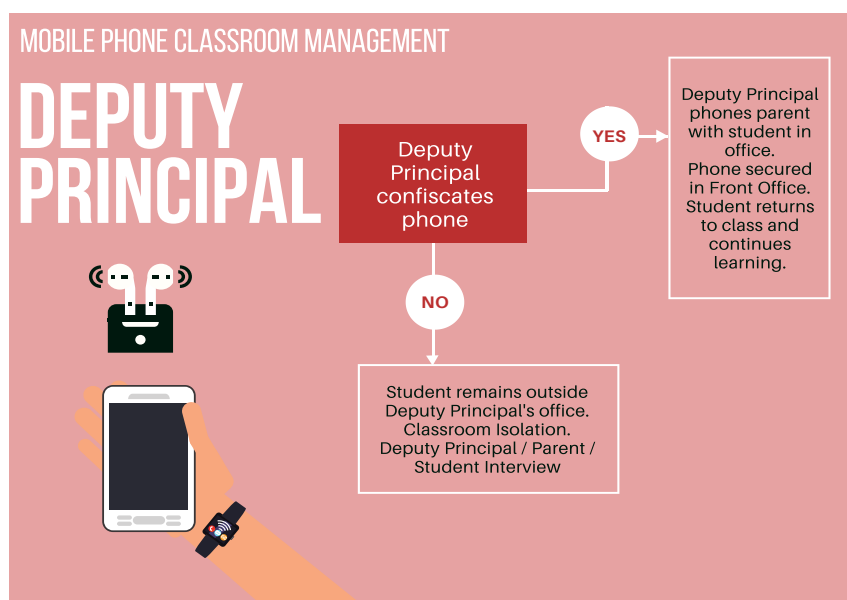
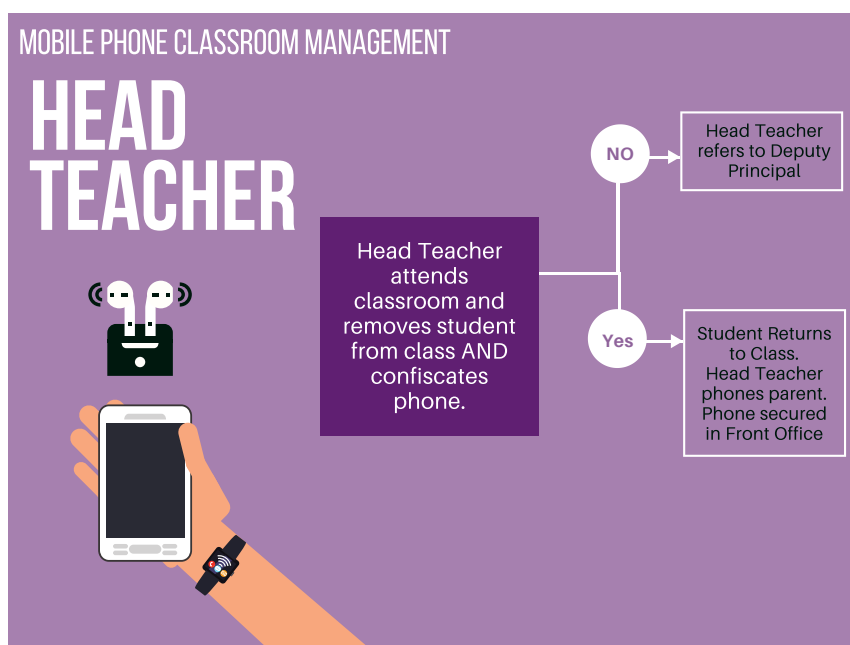
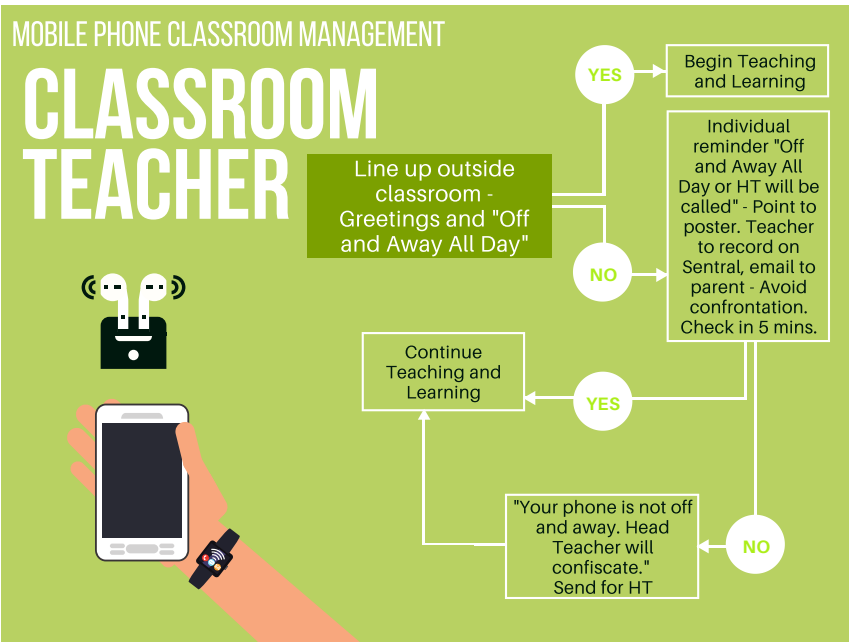
(Please see posters on following pages)



OFF & AWAY ALL DAY

Turn your phone /
smart watch off
and put it and
your headphones
in your bag







EDROLO AT CROMER CAMPUS

Edrolo is an excellent online study program and exam resource that is being utilised across a range of HSC and Preliminary subjects in 2019/2020.

Edrolo is a comprehensive, premium, online, interactive video and exam simulation resource for the HSC/Preliminary. Edrolo is currently used by over 300 schools and 50,000 students, and we are confident it is an extremely valuable investment, providing our students with a differentiated and targeted level of support as they prepare for their most important assessments and examinations.

What exactly is Edrolo?

Edrolo is an extensive study and exam revision resource crafted by master HSC teachers (including exam assessors, textbook authors, and department heads). Edrolo is built in accordance with the NESA Syllabus to guide students through their coursework during the year and final exam preparation.

Edrolo is broken up into two key elements:

- **Theory Master:** Interactive video courses mapped to each subject's syllabus and presented by proven expert teachers. Each subject's Theory Master has hundreds of videos and interactive quiz questions for students to learn from and test themselves on.
- **Exam Master:** Online practice exams offering video solutions for every single exam question, incorporating unique insights and diagnostic study tools enabling students to identify and target their individual areas of weakness.

Sitting behind Edrolo are rich analytics that our teachers will use to understand, in greater detail, the learning needs of students, and thereby be able to provide more targeted support than has ever been possible with traditional resources.

How will students use Edrolo?

Our teachers will guide students to make full use of Edrolo in a range of ways across the year, including:

- holiday homework;
- pre-class work;
- post-class consolidation;
- assessment preparation; and,
- exam revision.

How will students access Edrolo?

Edrolo is accessed simply by logging in to the Edrolo website: edrolo.com.au. Every student has been provided with a unique account that helps to track their progress throughout each subject. Students can access Edrolo anywhere there is an internet connection using their device of choice: laptop, PC, tablet or smartphone. There is no downloading of applications or software.

What can you do to support your HSC student?

We recommend you simply start by engaging in conversation about their Edrolo account if you notice they are struggling with their coursework, or don't know what to do next in their study program.

SEE THE PARENT INFORMATION VIDEO ON OUR SCHOOL WEBSITE AND PARENT PORTAL.

An important message about our response to COVID-19

The health and safety of our staff and students is of the utmost importance to our school.

We have implemented a range of measures to help keep our school healthy and reduce the spread of infection and illness. Some simple measures we ask that you adopt include:



Before entering our school

If you have been unwell, with symptoms such as a high temperature, cough, sore throat, and/or shortness of breath, please don't visit our school. Please contact our office to speak to one of our staff.



Increase hygiene practices

We request that all staff, students and visitors follow increased personal hygiene practices through regular and thorough hand washing and coughing or sneezing into your elbow or tissue, and disposing of tissues.

Ph:



Maintaining a healthy distance

For the health and wellbeing of our staff and students, please stand at least **1.5 metres** apart while waiting in our office. Our visitors are encouraged to wait outside for their turn to speak with our office staff. We are also applying social distancing requirements across all areas of the school as is reasonable and practical.



Support for our staff

We appreciate your patience and support while we work together to minimise the impact of COVID 19 in our community.

We know this is a difficult time and we are doing all we can to support our staff and students.

Search inside the Department for up-to-date information and resources.

Wellbeing and Safety of Cromer Campus Student Drivers and their Passengers



As is the case with many secondary schools, more and more of our senior students are driving to and from school. While most young drivers are careful, safety conscious and considerate when driving, they are one of the most vulnerable road user groups. Travelling with teenage passengers adds to the risk for these young drivers.

With this in mind, Cromer Campus has a responsibility to take all reasonable measures to ensure the wellbeing and safety of students. Our *Student Driving Policy* outlines what we expect from student drivers and their passengers. A copy of the policy is available on our school web site or can be obtained from the school office.

A *Parent Permission and Student Agreement Form* for both drivers and passengers can also be found on the school web site or obtained from the school office. All student drivers and parents/guardians are required to sign this form and return it to the school.

Please note: There is no parking available for students on school grounds.

Cromer Campus 2020 Policy for Students Driving Cars to School plus the permission and agreement forms are available on pages 18 & 19 of this Cromer Courier.



Compulsory School Attendance

Information for parents

Education for your child is important and regular attendance at school is essential for your child to achieve their educational best and increase their career and life options. NSW public schools work in partnership with parents to encourage and support regular attendance of children and young people. When your child attends school every day, learning becomes easier and your child will build and maintain friendships with other children.

What are my legal responsibilities?

Education in New South Wales is compulsory for all children between the ages of six years and below the minimum school leaving age. The *Education Act 1990* requires that parents ensure their children of compulsory school age are enrolled at, and regularly attend school, or, are registered with the Board of Studies, Teaching and Educational Standards for homeschooling.

Once enrolled, children are required to attend school each day it is open for students.

The importance of arriving on time

Arriving at school and class on time:

- Ensures that students do not miss out on important learning activities scheduled early in the day
- Helps students learn the importance of punctuality and routine
- Give students time to greet their friends before class
- Reduces classroom disruption

Lateness is recorded as a partial absence and must be explained by parents.

What if my child has to be away from school?

On occasion, your child may need to be absent from school. Justified reasons for student absences may include:

- being sick, or having an infectious disease
- having an unavoidable medical appointment
- being required to attend a recognised religious holiday
- exceptional or urgent family circumstance (e.g. attending a funeral)

Following an absence from school you must ensure that within 7 days you provide your child's school with a verbal or written explanation for the absence. However, if the school has not received an explanation from you within 2 days, the school may contact you to discuss the absence.

Principals may decline to accept an explanation that you have provided if they do not believe the absence is in the best interest of your child. In these circumstances your child's absence would be recorded as unjustified. When this happens the principal will discuss their decision with you and the reasons why.

Principals may request medical certificates or other documentation when frequent or long term absences are explained as being due to illness. Principals may also seek parental permission to speak with medical specialists to obtain information to collaboratively develop a health care plan to support your child. If the request is denied, the principal can record the absences as unjustified.

Travel

Families are encouraged to travel during school holidays. If travel during school term is necessary, discuss this with your child's school principal. An *Application for Extended Leave* may need to be completed. Absences relating to travel will be marked as leave on the roll and therefore contribute to your child's total absences for the year.

In some circumstances students may be eligible to enrol in distance education for travel periods over 50 school days. This should be discussed with your child's school principal.



My child won't go to school. What should I do?

You should contact the principal as soon as possible to discuss the issue and ask for help. Strategies to help improve attendance may include a referral to the school's learning and support team or linking your child with appropriate support networks. The principal may seek further support from the Home School Liaison Program to develop an Attendance Improvement Plan.

What might happen if my child continues to have unacceptable absences?

It is important to understand that the Department of Education and Communities may be required to take further action where children of compulsory school age have recurring numbers of unexplained or unjustified absences from school.

Some of the following actions may be undertaken:

- Compulsory Schooling Conferences

You may be asked, along with your child, to attend a Compulsory Schooling Conference. The conference will help to identify the supports your child may need to have in place so they attend school regularly. The school, parents and agencies will work together to develop an agreed plan (known as Undertakings) to support your child's attendance at school.

- Application to the Children's Court – Compulsory Schooling Order

If your child's attendance at school remains unsatisfactory the Department

may apply to the Children's Court for a *Compulsory Schooling Order*. The Children's Court magistrate may order a Compulsory Schooling Conference to be convened.

- Prosecution in the Local Court

School and Department staff remain committed to working in partnership with you to address the issues which are preventing your child's full participation at school. In circumstances where a breach of compulsory schooling orders occurs further action may be taken against a parent in the Local Court. The result of court action can be the imposition of a community service order or a fine.

What age can my child leave school?

All New South Wales students must complete Year 10 or its equivalent. After Year 10, and up until they reach 17 years of age, there are a range of flexible options for students to complete their schooling.

Working in Partnership

The Department of Education and Communities recognises that working collaboratively with students and their families is the best way to support the regular attendance of students at school.

We look forward to working in partnership with you to support your child to fulfil their life opportunities.

If a student misses as little as 8 days in a school term, by the end of primary school they'll have missed over a year of school.

Further information regarding school attendance can be obtained from the following websites:

Policy, information and brochures:

Please visit the Department of Education's *Policy library*

The school leaving age: Please visit the Department of Education's *Wellbeing and Learning* website

Do you need an interpreter?

Interpreting services are available on request, including for the hearing impaired. The Telephone Interpreter Service is available 24 hours a day, seven days a week on 131 450. You will not be charged for this service.

For further advice and questions contact your educational services team

T 131 536

Learning and Engagement

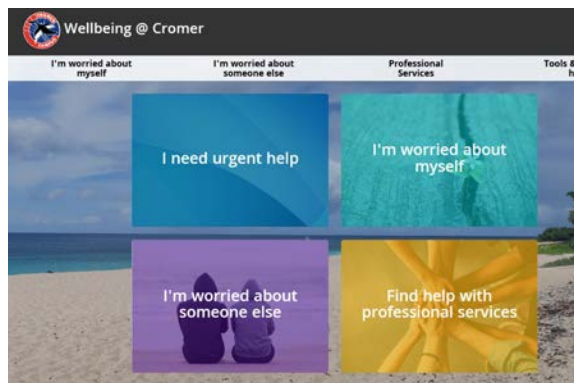
Student Engagement & Interagency Partnerships

T 9244 512

www.dec.nsw.gov.au

© February 2015

NSW Department of Education and Communities



The WELLBEING@ CROMER link is on the front page of the school website.

It contains information, resources and links to support the wellbeing of our students and families.



A further wellbeing initiative is the creation of a whole school Google classroom called:

Wellbeing at NBSC Cromer Campus

The code for this classroom is:

b2dgcwk

This classroom will be regularly updated with resources and is open to students and parents.



Cromer Campus Policy for Students Driving Cars to School

Any student who holds a valid NSW licence and intends to drive to school, either on a regular basis or occasionally, must comply with the school policy and is required to complete the Parent Permission and Student Agreement Form.

Cromer Campus Policy:

1. Students are required to adhere to all road rules and drive in a safe and responsible manner.
2. Student licence details and car make and registration must be recorded with the school.
3. Students are only to use their car for travelling to and from school.
4. Students are not permitted to go to their car during the school day.
5. Students are not to use their cars at lunchtime or in their study periods
6. Students are not permitted to carry other students as passengers to and from school or school events without the written permission of their parent/guardian and the passenger's parent/guardian. The Passenger Permission Form must be completed and submitted to the office.
7. Students are required to notify the school of any passenger who may be travelling with them to and from school as per the Passenger Permission Form.
8. Student drivers, a parent/guardian and, if relevant, the parent/guardian of any passenger, must sign the Parent permission and Student Agreement Form.
9. Cromer Campus does not have space available for student parking. Consequently no student is permitted to park their car within the school grounds.
10. The school's Welfare and Discipline Policy will apply where students fail to meet these obligations. Any unsafe driving behaviour or breaches of road rules will be reported to the police.



Cromer Campus Passenger Permission Form

This form must be completed by a parent/guardian of any student intending to travel to school as a passenger of a student of Cromer Campus who drives a car to and from school unless this student has permission on the original Parent Permission and Student Agreement Form.

I give approval for

Student Passenger's Name: _____

to travel with

Student Driver's Name: _____

We accept all conditions detailed in the Cromer Campus Policy for Students Driving Cars to School.

Parent/Guardian of Student Passenger

Name: _____

Parent/Guardian Signature: _____

Date: _____

Student Passenger

Name: _____

Student Signature: _____

Date: _____

School Approval:

Approved By: _____

Signature: _____

Date: _____

Cromer Campus Students Driving Cars to School Policy 2020



Cromer Campus Parent Permission and Student Agreement Form

***Note:** A photograph of the student's driver licence must be attached to this form.

This form must be completed by any student who intends to drive to school either occasionally or regularly.

Student Name: _____

Car Make/Model: _____

Colour and Registration Number: _____

Note: If the student intends to drive any car other than the one registered on this form, it must also be registered with the school.

Parent Permission

I give permission for _____

to drive to school and, if indicated on the reverse of this form, take the passengers indicated on this form. I am aware of the Cromer Campus Policy for Students Driving Cars to School. **I have seen the completed Cromer Campus Passenger Permission form for the student/s identified on this form.**

Name of Parent: _____ Date: _____

Signature of Parent/Guardian: _____ Date: _____

Student

I agree to adhere to all road rules and drive in a safe and responsible manner and follow the Cromer Campus Policy for Students Driving Cars to School.

Signature of Student:

_____ Date: _____

School Approval:

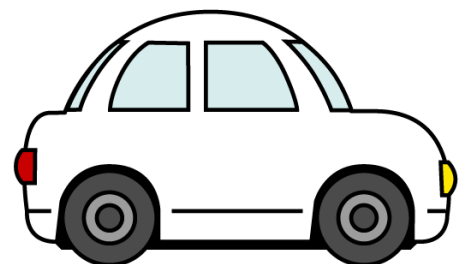
Approved By: _____

Signature: _____ Date: _____

Names of Students with completed Cromer Campus Passenger Permission forms approved to travel with

_____ Name of Driver.

- 1.
- 2.
- 3.
- 4.



To the School Principal / Headmaster

Conditions of use – Student Opal Card

I write to request your assistance in promoting the importance of using the Student Opal Card correctly.

It is a condition of use that students tap on at the start and tap off at the end of each trip with their Student Opal Card. This is important to ensure accurate patronage data is recorded. This data is used to plan school special and regular route bus services and assists State Transit in ensuring adequate capacity is provided, so students can travel to and from school safely.

Current statistics indicate that many students have failed to tap on or off the Opal readers when travelling. If students do not tap on and off the school bus service, it may appear under-utilised and may be considered for cancellation, based on low passenger numbers.

To assist with our future service planning can you please remind parents and students of this important condition of use so State Transit can continue to provide effective bus services in the future.

For more information and to apply for a School Opal card call 131500 or apply online at <https://www.opal.com.au/en/about-opal/opal-for-school-students>

Thank you for your assistance.

Yours sincerely

Patrick Wu
 Customer Operations Manager
 Brookvale Depot
 State Transit Authority
 Ph: 9941 5864
 Mob: 0429994138
 Patrick_wu@sta.nsw.gov.au



School Student Travel Term 1 2022



School student travel information for parents and students

School Travel Passes

Students who need a School Opal card or travel pass but have not yet applied need to [apply](#) or [update](#) their details as soon as possible.

In the Opal network, students should travel with a Child/Youth Opal card until they receive their valid School Opal card. If outside Greater Sydney, parents should contact their [local bus operator](#) to discuss their travel needs.

New Student Opal cards (including new Term Bus Passes) will be sent to the student's nominated postal address within two weeks of their application being approved.

Students living in rural and regional (R&R) areas will receive their travel pass from their nominated transport operator. It may be issued via their school or be sent directly to them at home. **Note:** some R&R operators do not issue travel passes. Students/parents should confirm with their nominated operator if they do not receive a pass.

Terms of Use

Students using Opal cards must tap on and tap off in line with the [Opal terms of use](#).

All students are required to comply with the [Student code of conduct](#). The code of conduct aims to ensure the safety and well-being of school children and other passengers. It is important that parents ensure their child is aware of this, as failure to comply with the code of conduct can result in a suspension from travel.