

Cromer Courier

CROMER CAMPUS NEWSLETTER

Respect • Responsibility • Success



/cromercampus



#cromercampus



@cromercampus

<http://www.nbsscromer-h.schools.nsw.edu.au>

nbsscromer-h.school@det.nsw.edu.au

Telephone: 9981 1155

120 South Creek Road CROMER NSW 2099



Year 7 Rock Band - CAPA Showcase

FROM THE PRINCIPAL

Term 4 2022



By **JUSTIN HONG**
Principal
NBSC Cromer
Campus

Below is an excerpt from my Presentation Evening speech with thanks to our entire school community for 2022.

2022 has been another great year for our school. It has been a year with challenges of course but there is a feeling from all, that we are looking at COVID in the rear-view mirror and we are getting on with everything we need, want and expect to be able to do. For our school this has especially included extra-curricular activities, excursions, art shows, sport, music nights, camps, homework

club, dancing, band rehearsals - the list goes on. We value all of this. I know it is what builds our positive school culture, provides opportunity and it is what students remember and enjoy most about their high school experience. Importantly in our classrooms we have again had much success. I watched the news a few nights ago with a sense of bemusement and pride as the story was about how poorly NSW schools have performed in grammar and punctuation according to NAPLAN.

IN THIS ISSUE

**Schools Spectacular 2022
P22 & 24**



**Dee Why Public School
Workshop P16**



Annual Sport Awards P8



Info for Parents - School Bytes P3

French Cafe Yr 7 P4

Sport Report P8 & P32

HSIE Eat Street P11

Illuminate Challenge 2022 P18

Ancient Weapons Yr 7 P14

CAPA Showcase P20

Stage 5 Artworks P26

ATOMI for Stage 6 P33

Parent Info - School Uniform P35

..... and much more!

Principal's report continued...

Well not at Cromer Campus where that area of NAPLAN was our best result, well above state average and we are well above state average in almost every other area. Next year we will have an increasing focus on numeracy. But I want to repeat as I am sure you have heard me say this before, our school is not just about a great test result, there is a higher purpose to what we do here. We want every child who leaves Cromer Campus to have a great command of the basic skills. We know that students who have command of this, who can write in a sophisticated way with a large vocabulary and a love of reading for understanding will not only be successful at school, but they will be successful in life beyond school.

I know that this success is watched closely by our amazing community here at Cromer and as a result our student population will again jump next year by another 130 enrolments. Our school population next year will be well over 1100 students which is the population size that our school is built for.

I want to sincerely thank the entire Cromer Campus community for their unwavering support of our great school throughout 2022.

While I am very proud of this growth and our staff and students for achieving this, it has never been my ambition to grow the school. For me and the executive and teachers of our school, it has always been about quality service, quality teaching and quality education. Therefore our challenge moving forward continues to be focussed on improving our quality of service and it is a challenge we relish and are looking forward to in 2023 and beyond. Our school plan next year will have a focus on the induction of our new staff, ensuring they know how well we do things here at Cromer Campus so that they can add to our culture of success and achievement. For our students in the classroom we will continue working on literacy with an emphasis on numeracy, displaying our schools values of respect, responsibility and success, and high impact teaching strategies for our teachers and students so that they can further improve in their learning. It is always a lot to do but it is such an exciting time for our school.

I would at this time like to acknowledge and show my gratitude to the Cromer Campus P&C led by our president Mrs Jackie Reavie. This year the P&C have accomplished a great many things, including the successful running of our school canteen, and they have now taken over the running of our uniform shop. The P&C have been supporting the teachers and the programs of our school with gifts, praise and encouragement, all of which makes a huge difference. They have funded some of the welfare programs for our school this year and organised a highly successful evening for parents with Dr Kristy Goodwin who spoke to our community about "screenagers". The P&C purchased and installed outdoor furniture which has increased the quality and quantity of outdoor spaces for our students. This year they also organised two successful working bees at the school. These were great community days where parents and students were able to come together and generously offer their service to the school. Thanks to every parent and student who attended and picked up a rake or a shovel and dug in for our school. It is with congratulations I announce that our P&C were successful in acquiring a \$40000 grant from the state government which will be used to purchase more outdoor furniture and recycling bins. I would also like to thank every member of our community who donated to our go-fund me page that supported this grant. We know that not everybody can make a meeting or attend a working bee but many of you donated to this cause and as a result the P&C raised close to \$15000. I think you will agree this year our P&C have been very busy. I rely heavily on the open partnership I have with the P&C and look forward to their continued involvement in 2023 and beyond. Can you please join with me in thanking the parents of the P&C for all of their hard work in 2022.

Our students, as I often say, are wonderful. There is such diversity and talent at our school and I get to see this every day. Tonight you are seeing but a snapshot of how fantastic our students are. I would like to congratulate all of our students especially our award recipients tonight for their achievements. Could you please join with me collectively in congratulating all of our award winners tonight.

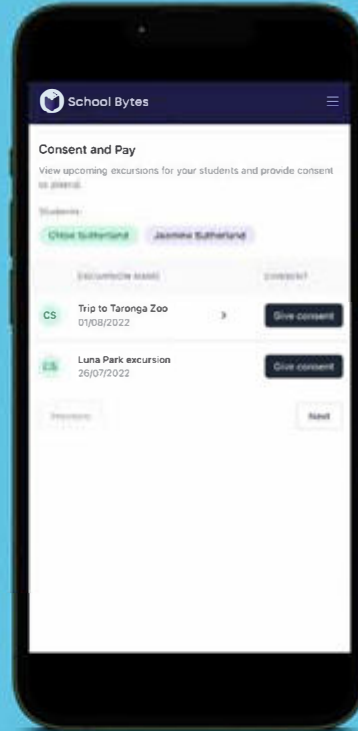
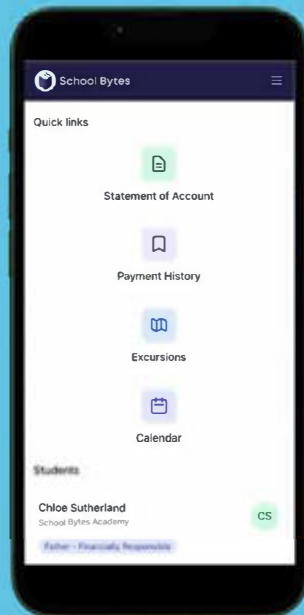
Of course, great learning does not occur without great teaching and I am a very fortunate Principal indeed to have such a dedicated and professional staff. I am so grateful for our teachers, head teachers and Deputy Principals who work so hard every day to engage students and provide that quality education and high expectations our students need and deserve. They are supported of course by some equally hardworking teachers' aides and a tremendously dedicated administrative SASS staff. All of these wonderful people dedicate so much of their time, patience and commitment to the students of Cromer Campus. Can you please join with me in thanking the teachers and staff for all of their hard work in 2022.

I would like to thank all members of our community for the support that you have shown Cromer Campus this year and I would like to take this opportunity to wish you all a very safe and happy festive season. Students I wish you all a restful and enjoyable holiday and I can't wait to see you back here in 2023.

Justin Hong
Principal

EASIER PAYMENTS NOW LIVE

We are excited to announce our school will be transitioning to a more flexible and simplified way parent/carers can make payments



The Parent Portal

- Easily make a payment online
- Download your receipt
- Sign and return permission notes digitally
- Use any credits on your account to make payment
- View your complete payment history
- Request a refund



School Bytes

AVAILABLE
NOW

Register for the Parent Portal via the QR Code or visit

<https://portal.schoolbytes.education>



Dee Why Mobile Blood Donor Centre

Open in January - please go to page 23 for location, opening dates and times.

LOTE FACULTY

French Cafe Experience



LOTE FACULTY

French Cafe Experience



CAPA FACULTY

Stage 4 Artworks

Year 7

Year 7 have continued to explore the portrait in Semester 2 through units on 'Pop art' and 'Expressionism'. During Term 3 Year 7 artists studied colour theory and the work of Pop Artist Andy Warhol. Students quickly put what they learnt into practice by photographing themselves, editing these photographs using digital software programs and then painting dynamic Pop Art inspired portraits using acrylic paint.

During Term 4 the expressive works of Jean Michel Basquiat were studied as inspiration for students to create their own dynamic mixed media works. Students dug deep to create large scale self-portraits, using paint poscas, oil pastels, pencils and collage techniques. The inclusion of word association activities and text in their self portraits added layers of depth and interest to the personal works.

Year 8

This semester, Year 8 have continued to explore a range of art styles and perspectives through our overarching topic of 'Art of Asia and the Pacific'. In Term 3, students engaged with art of India, exploring Henna painting techniques and a hybrid-animal artmaking task.

In Term 4, students looked at the work of Aboriginal artist Jimmy Pike to create a collaborative work that explores abstraction, symbolism and the significance of 'land' and 'place'. We divided up a map of our home, the Northern Beaches & North Shore and each student completed a section of the map. The large finished works from each Year 8 class looked vibrant and dynamic on display in this year's CAPA showcase.



HSIE FACULTY

Stage 4 Artworks



PDHPE FACULTY

Sport Report

This term Cromer was finally able to host students and parents for the annual sports award ceremony. After missing two years due to COVID, it was amazing to once again celebrate the wonderful achievements of our student athletes. 2022 was arguably one of Cromer's most successful years, with many teams and individuals receiving awards and recognition. This year we had over 80 student athletes receive awards on the day and it was great to be able to recognise their achievements in front of their peers and over 150 parents and guests.

Our distinguished guest for the ceremony was former NRL and test player Mark Gasnier, who helped with the award presentation and shared some words about his journey to the top. He delivered some inspirational advice about the role sport can play in developing successful young boys and girls. We thank Mark for his time and advice.



Our major award winners were:

- Winning House – Kurrawa
- Most successful Team – Senior Boys Touch
- Female Sportsperson of the year – Aylah
- Male Sportsperson of the year – Noah



PDHPE FACULTY

Sport Report

Cromer also participated in our last gala day for 2022. The NRL hosted a league tag gala day for Years 7-10 at Rat Park. Our school was well represented with junior and senior girls teams, and two senior boys teams. Results varied throughout the day with several strong performances from our teams. Well done to all on a successful day.



As we look forward to 2023 we once again ask our students and parents to keep an eye out for notices regarding all things sport. With such strong junior cohorts, 2023 is looking very promising for Cromer Campus and we can't wait to see our athletes continue their success in years to come. We thank all our student athletes for their dedication and commitment throughout 2022. In addition, we extend our thanks to our passionate teachers who volunteer their time and go above and beyond to organise and ensure our students enjoy sporting success.



Australian MTB Interschools

The Australian MTB Interschools returns to Thredbo in 2023 with 5 days of action packed riding, racing and good times with class mates. Compete as an individual or as a team and pick which events you'd like to compete in. Registrations will sell out so be sure to rally your mates up and descend on Thredbo for the best week of the school year!

Monday 6 - Friday 10 March, 2023

SAVE THE DATE!

For more info go to :

<https://www.thredbo.com.au/events/2023/australian-mtb-interschools/>



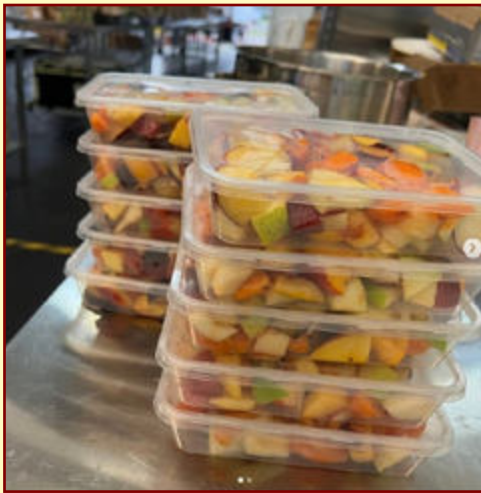
CAPA FACULTY

Northside Big Band

The Northside Big Band invited local primary schools to join them at a community concert at the Forestville RSL. The Cromer Campus Stage Band performed their favourite pieces 'Birdland' and 'Hey Pachuco' for the first time, along with other pieces they have performed over the year. It was great to take part in this performance opportunity as the students were able to see Narrabeen Lakes Primary School, St Pius X College and The Forest High School perform at such a high standard it inspired them to continue to perform as much as possible.

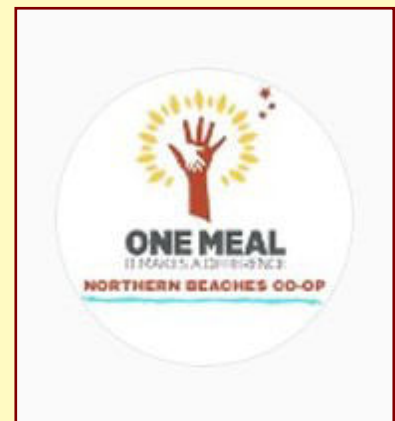


CROMER CAMPUS WELLBEING BRUNCH PROGRAM



The Cromer Campus Wellbeing Team would like to thank One Meal Northern Beaches for their support throughout the year. Every week One Meal provide breakfast packs, sandwiches, fresh fruit and healthy snacks for our Brunch Program. Students in need can access food before school, at recess or at lunch from Student Services.

We are very grateful for the volunteers and community donations that make this possible. You can find out more about One Meal on their website <https://www.onemeal.org.au/northern-beaches/>



HSIE FACULTY

Eat Street

During Term 3, Year 9 Commerce students ran fourteen different food stalls during lunchtime. As part of the Commerce program, this practical assessment task involved students planning, promoting, and operating food/drink stalls in friendly competition with their peers. Additionally, several Year 11 Business Studies students also assisted on the day.

Offering a vast array of national delicacies, both savoury and sweet, huge numbers of fellow students (and teachers) eagerly bought up the tasty treats offered for sale. Some of the treats on offer included: sausage sandwiches, egg and bacon rolls, dumplings, spaghetti bolognese, cookies, cannolis, cupcakes, caramel slices, "spiders", soft drinks and lolly bags.

Prizes (Canteen vouchers) were awarded for the top three most profitable teams – 1st place Cromer Snags, 2nd place Lolly Van and 3rd place Nacho Monster. All participating students engaged positively with this activity and took away valuable learning experiences from running their mini businesses. All profits from the day will be donated to local Northern Beaches food charity "One Meal" (<https://www.onemeal.org.au/northern-beaches/>).



Term 4

@Cromer Campus Library

This term our Library hosted the HSC Exams for the first four weeks. It provided our students with a quiet and welcoming environment to ensure they would bring their best to their final school exams.

For us it was very encouraging to see so many Year 12 students preparing well and borrowing from our newly expanded Study Guide range kept in the senior study area. We encourage our new Year 12 students to use this fantastic resource.

Once this was over it was back to business as usual.

Ms O'Neil had her book club up and running with discussions underway for an exciting new program in 2023.....so watch this space!



We held an informal morning tea in the library office to say thank you to our fabulous Library Monitors and welcomed some new ones into the fold. Our Library Monitors work so hard to help maintain our library and we just couldn't do it without them. They were treated to an amazing Mars Bar slice made by Ms Kennedy, one of our SLSO's, who was also joined by Ms Forsyth and some of our international students.



Term 4

@Cromer Campus Library

It is competition time again in the Library to encourage our students to borrow over the Christmas holiday period. For every book borrowed or returned students will receive an entry into our lucky draw. We have again been gifted some movie tickets thanks to Hoyts Warringah Mall for our lucky winners.



And finally, just a few stats from us....

- Over 250 new books were purchased and added to our collection this year - fiction, non-fiction and study guides.
- Over 350 students participated in our Library competitions and promotions.
- We signed up over 100 students to the local Northern Beaches Library. All students were issued Library cards to use outside of school time, giving them online access to all the Council Library resources.
- We were also very thankful to have an amazing range of brand-new magazines donated. They cover a wide range of areas of interest and are on display at the front of the Library.

We wish you all a very relaxing break and look forward to welcoming everyone into the Library next year!

HSIE FACULTY

Ancient Weapons Show

This annual event took place in the NBSC Cromer Campus Gym, with two shows required to cater for our large Year 7 cohort. James Adams (aka The Weapons Dude) kept students enthralled during each of the two 90 minute shows, demonstrating the types of weapons used by various ancient cultures that Year 7 & 8 HSIE students study. Of particular interest were armour and weapons from Ancient China and Greece, as students have studied these two societies during Year 7 HSIE lessons. Additionally, Viking and other medieval armour and weapons were featured during each show.



Some lucky students were actively involved in each of the shows, with James and his assistant outfitting them with replica armour and weapons. The intermission allowed students to have some "free-time", trying on a variety of ancient armour, chain mail and helmets, while responsibly handling replica weapons such as swords, shields, spears and axes. Overall, the day was another resounding success with students learning about a variety of ancient cultures and the weapons used in the past.



HSIE FACULTY

Ancient Weapons Show



CAPA FACULTY

Dee Why Public School Workshop

Dee Why Public School asked the Cromer Campus Concert and Stage Band to attend their school for a combined workshop. The piece selected was 'The Magic of Harry Potter', with Cromer Campus students acting as mentors and tutors during the session to support the young musicians in Years 5 and 6 in Dee Why's concert band. After the workshop, we presented a combined concert for the entire school, performing pieces from both school bands such as 'High Hopes' from concert band and 'Sing, Sing, Sing' from stage band. To finish off the concert, we performed 'The Magic of Harry Potter' and the young students of Dee Why Public School loved every moment of it.



It was a great to support one of our feeder primary schools and to encourage younger musicians to join our concert or stage band when they attend our great school.



CAPA FACULTY

Hot Potato Band

The Hot Potato Band is for Music Students from curricular and co-curricular programs with a key aim of demonstrating the connection between music and movement. It was an interactive roving style concert designed to inspire students to begin and continue their musical journey and gain an understanding of Hot Potato Band's history, arrangements and the origins of brass band music.

Our students at Cromer Campus loved being a part of this incursion and were able to participate in several workshops on finding the beat, rhythm exercises, improvising and learning a new song together and as a large ensemble.



SCAN ME



SCAN ME



HSIE FACULTY

Illuminate Challenge 2022



In Term 4 a group of students from Commerce attended the Illuminate Challenge.

The illuminate Challenge is the flagship program of Illuminate Education Australia, taking students through a five-day innovation process. Teams begin by developing their understanding of a relevant community issue and define a problem they see. They then creatively explore and refine possible solutions, develop business models for sustained impact as well as marketing materials and financials, and finally teams present the idea for investment with a prototype of their solution.



HSIE FACULTY

Illuminate Challenge 2022



After breaking into their groups, the students of Cromer, Manly and Mackellar started to define their community problems and began assigning tasks. For three days, they co-ordinated market research, planning, budgeting and performance goals for their groups.

On the last day the groups were given a chance to present their idea to a panel of judges. This was followed by an official award ceremony recognising the winning teams.



CAPA FACULTY

CAPA Showcase

It has been two years since we have been able to hold our annual CAPA Showcase to a live audience and have so many musicians, bands, ensembles and tech crew involved. Mr McKee has worked incredibly hard alongside some extremely dedicated tech crew students to have this show up and running over two performance days. The CAPA Showcase was so popular amongst all acts, that four matinee shows were made to ensure everyone was able to have the opportunity to perform in front of an audience.



Junior Guitar Ensemble



Senior Guitar Ensemble



Maddie, Evie, Caroline & Daniella



Senior Contemporary Band



Stage Band



Tech Crew



Year 7 Rock Band



Concert Band



Choir



Year 8 Rock Band



INTEGRATED STUDIES

What a busy, exciting, action-packed semester we have had here in Integrated Studies (IS). There has been so much happening that it's hard to know where to start.

SCHOOL SPECTACULAR 2022

We are a School Spectacular School! This year six of our star-studded students auditioned and were accepted to be part of School Spectacular 2022, D'Arts Ensemble. D'Arts Ensemble is for students with disability from NSW public schools. Every Monday for five weeks our students and Head Teacher Mrs Barry and SLSO Mrs Cross travelled to Strathfield to learn the dances, rehearse, rehearse again and rehearse some more! Mrs Barry put on her bus driving hat and drove the entourage to and from Strathfield in the College Bus. Special shout out to Mr Dane Roper who facilitated the use of the college bus. At the end of November with costumes ready and dances learned our students travelled to Homebush for the final dress rehearsals and the performances.



They travelled with the school choir, led by the awesome Ms Bailey. A huge thank you to Ms Bailey, Ms Francis and Mrs North for helping out with supervision, giving up their time and embracing all things School Spectacular. The live performances were AMAZING. The experience MAGIC. An experience that will never ever be forgotten by all involved. Make sure to watch the performances on TV Saturday 17 December 2022 on SEVEN Network.

MCA BELLA PROGRAMME 2022



This semester our students travelled to the Museum of Contemporary Art (MCA) to participate in The Bella Program. The Bella Program offers a range of free creative programs for people of all ages with disability. Our students LOVED it!



The MCA is such an exciting, fun place to visit. Led by the MCA educators, our students went on an artistic journey of discovery. We toured the museum and then produced our very own contemporary art! We enjoyed being in the city too. It is always such fun to head into the city and see the sights. Our students travelled on public transport, using their Opal cards, and bought lunch at the local cafes. It was an all-round educational and fun experience! We are looking forward to Bella 2023 already!

INTEGRATED STUDIES

NSW SPORTS INCLUSION –

IS TEN PIN BOWLING SUCCESS

Four of our fabulous students achieved huge success in NSW Sports Inclusion Ten Pin Bowling this year. Ryen, James, Aaron and Hunter competed and won the Sydney North competition held in Term 3. They then went on to represent Sydney North at the NSW State Ten Pin Bowling competition. The final was held in Rooty Hill. Our bowlers did themselves, the school, and Sydney North proud by finishing 16th out of 30 schools that participated from across NSW. Go Team IS!



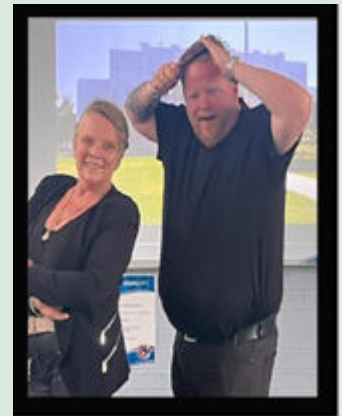
INTEGRATED STUDIES – GUEST APPEARANCES



This semester we had some very special guest appearances. Sean Keppie who currently plays for Manly Sea Eagles popped in to see us in Week 8.

Sean educated us on leading a fit active and healthy life. Thank you so much Sean for visiting us – please come again if you can.

We also had a special guest appearance from Sandy and Danny aka Mrs Barry and Mr O'Brien. The duo performed one of the hit songs from Grease accompanied by the Pink Ladies and Gentlemen of course! Wishing our student, families and colleagues a peaceful and relaxing holiday. See you all in 2023.



An illustration on a red background showing three people holding large letters that spell 'DEE WHY'. A yellow bus is also shown. The background has a white location pin icon.

The Australian Red Cross Lifeblood logo, featuring a red cross and the text 'Australian Red Cross Lifeblood'.

Dee Why Beach Car Park

2 to 8 January

Give life. Give blood in Dee Why.

Monday	9 am – 2 pm
Tuesday	1 – 6 pm
Wednesday	1 – 6 pm
Thursday	1 – 6 pm
Friday	9 am – 2 pm
Saturday	9 am – 2 pm
Sunday	9 am – 2 pm

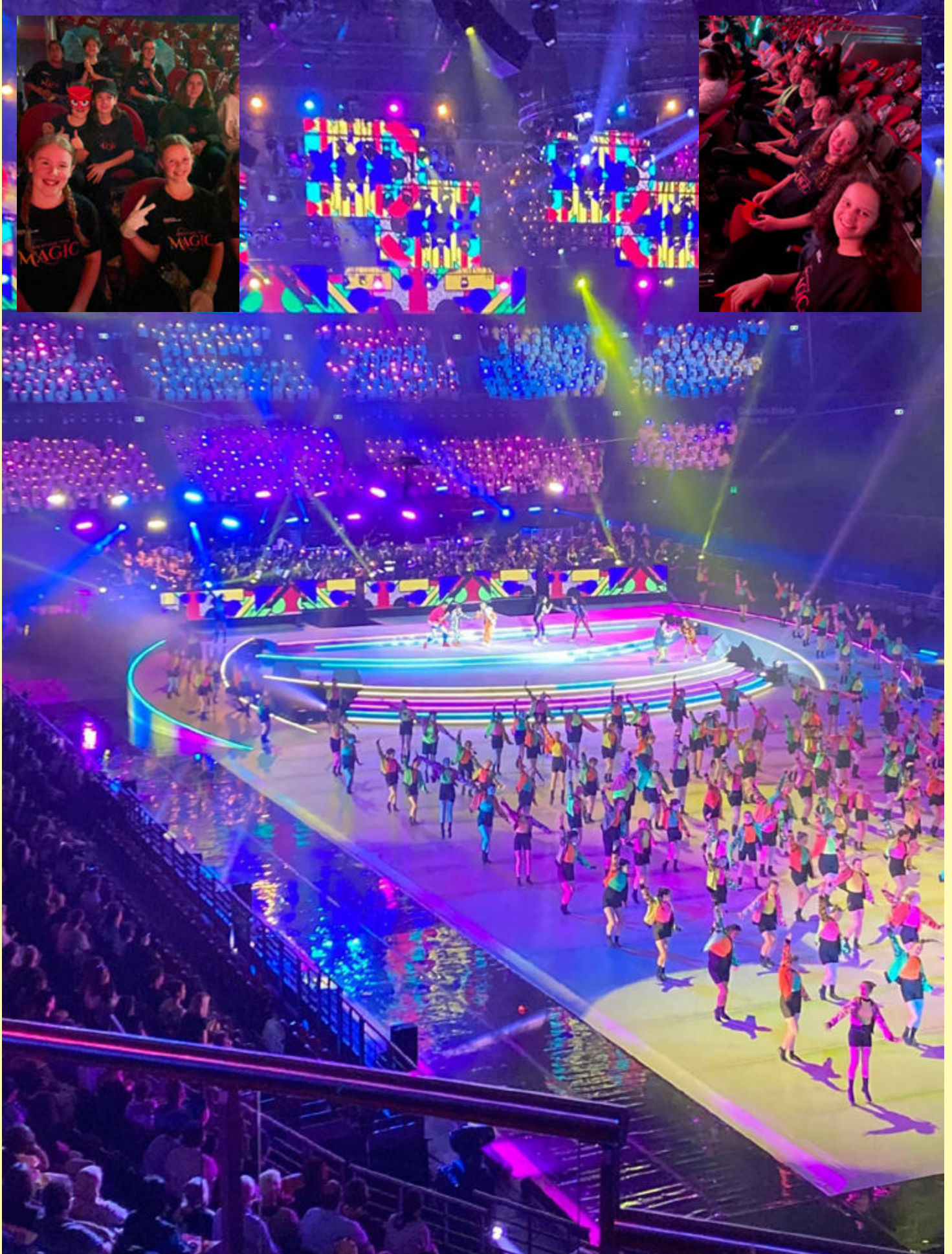
SCHOOLS SPECTACULAR 2022



Congratulations to our NBSC Cromer Choir and our Integrated Studies performers who performed in this year's Schools Spectacular! Thank you to our wonderful staff – Ms Bailey, Mrs North, Mrs Francis, Mrs Barry and Mrs Cross. This will be broadcast on Channel 7 on December 17th at 7pm.



SCHOOLS SPECTACULAR 2022



CAPA FACULTY

Stage 5 Artworks

Year 9 Visual Arts

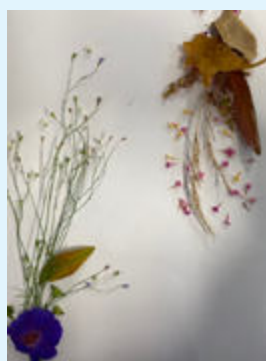
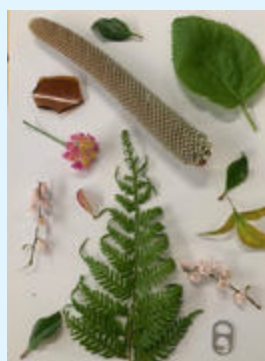
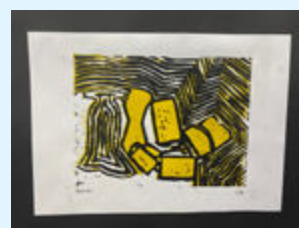
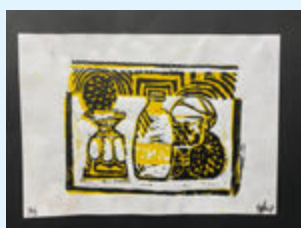
This semester our visual artists in Year 9 have been creating a range of artworks inspired by the natural world around them, through the topics of 'Organic Sculpture' and 'The Bush'. During Term 3 students had fun getting their hands dirty creating organic clay sculptures demonstrating excellent clay building techniques and developing an understanding of the kiln firing and glazing process.

Term 4 began with an exploration of 'The Bush' where students took a walk around the grounds of the school collecting flora in preparation for observational drawing activities and an assemblage photography task. Students were taught the art of assemblage, arranging their objects in an aesthetically pleasing placement. These images were then photographed, printed and pasted into their art books, for the commencement of detailed botanical style drawings and watercolour observations. Finally, the term was wrapped up with a mixed media artmaking task inspired by an artist case study of John Wolseley.

Year 10 Visual Arts

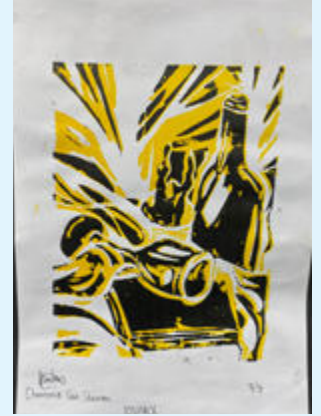
In Semester 2, Year 10 have created a series of works around the topics of 'Still Life' and 'Street Art'. During Term 3, students developed an understanding of lino carving and printmaking techniques to create a series of artworks inspired by still life art of the Dutch Golden Age.

In Term 4, we have been looking at 'Street Art', where students were able to explore a range of Street Art styles and techniques. Students tried their hand at spray painting, stencil making and manipulating different fonts to create a Street Art 'alias'. Students then worked collaboratively in groups to create a mural proposal for an area of the school and created mini-murals as a part of their pitch. With complete creative freedom, students produced mini-murals that were vibrant and dynamic, within the theme 'inspire'.



CAPA FACULTY

Stage 5 Artworks



Art Inspired by Henri Matisse

Year 7 French – Henri Matisse Inspired Art

Year 7 students in French throughout the year have created their own Matisse paper cut-out artworks, learning about shapes, colours, adjectives and verbs along the way.



LOTE FACULTY

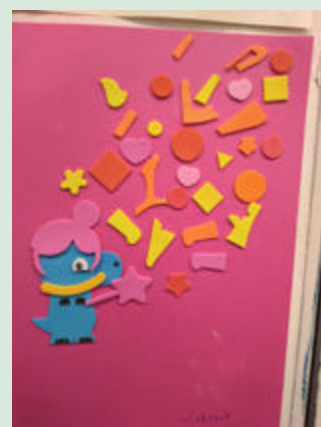
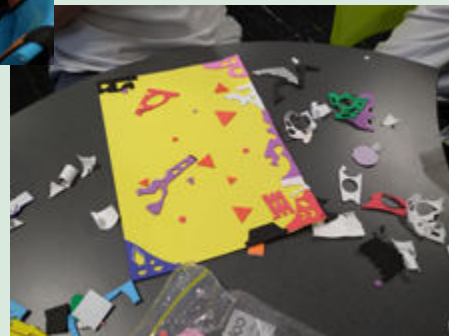
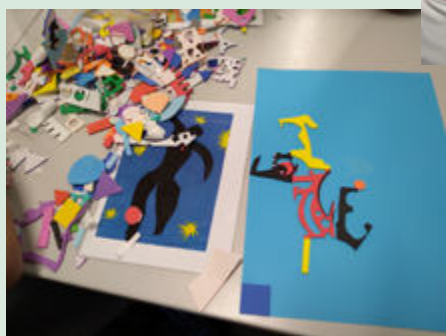
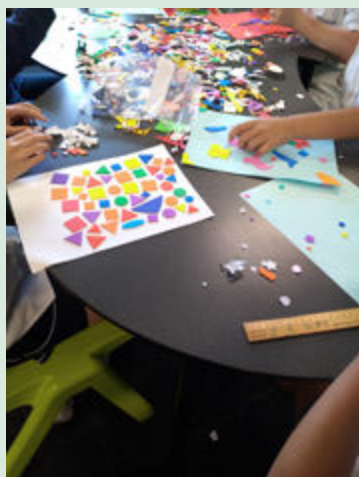
Art Inspired by Henri Matisse



Henri Matisse-
Deux Danceurs



Henri Matisse-
L'Escargot



MATHEMATICS FACULTY

Coolmaths@cromercampus

How much fun can you cram into one day?

If it's the Year 8 MANSW "Lean & Ride" day at Luna Park... HEAPS!!



MATHEMATICS FACULTY



Senior State Age Swimming Championships

Zoe Scholtens Year 10 winning the 16 & over girls 50m freestyle at the Senior State Age Swimming Championships recently.



1st	Scholtens, Zoe	WASC	27.93
2nd	Farish, Olivia	SYDU	28.36
3rd	Kohl, Ella	MQSH	28.37
4th	Revell, Alexandra	CBRA	28.40
5th	Thomas, Abbey	LNSC	28.42
6th	Kitcher, Elizabeth	ABTO	28.45
7th	Howard, Tayla	RAND	28.87
8th	Horsley, Natalia	WGAA	29.25
9th	Sotiropoulos, M	MINLY	29.45



I respect and acknowledge Aboriginal people as the traditional custodians of the lands and waters on which we work and live

Reporting retailers of illegal nicotine e-cigarettes

Electronic cigarettes or e-cigarettes are battery operated devices that heat a liquid (or e-liquid) to produce a vapour to inhale. Using an e-cigarette is sometimes called 'vaping'.

E-cigarettes come in many shapes and sizes and can be made to look like everyday items including highlighters, pens or USB memory sticks. E-liquid contains a range of chemicals or flavours, and often contains nicotine.

In NSW, the sale of e-cigarettes and e-liquids that contain nicotine is illegal. Selling tobacco or e-cigarettes to minors is also illegal. NSW Health is seeing an increase in the sale of nicotine containing e-cigarettes, including to minors.

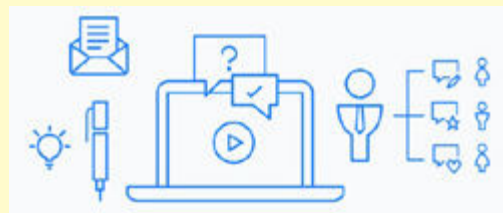
NSW Health takes non-compliance with tobacco and e-cigarette laws seriously and NSW Health officers undertake inspections of retailers to ensure they are complying with the laws.

If you think a retail store is selling e-cigarettes that contain nicotine, or selling any tobacco or e-cigarette products to minors, please report it to NSW Health by completing the online reporting form: <https://www.health.nsw.gov.au/tobacco/Pages/let-us-know-reports-complaints.aspx>, or by calling the Tobacco Information Line on 1800 357 412.

Further information on e-cigarette is available on the NSW Health website at: www.health.nsw.gov.au/tobacco/Pages/e-cigarette-young-people.aspx

ATOMI AT CROMER CAMPUS

Atomi is an **interactive online learning platform** to support our stage 6 students explore and **apply knowledge and understanding of their HSC and Preliminary subjects.**



Atomi is an extensive study and exam revision resource crafted by HSC experts and powered artificial intelligence to provide individual and tailored learning experiences. Atomi is built in accordance with the NESA Syllabus to guide students through their coursework during the year and final exam preparation. By utilising atomi, students can invest their time into developing higher order skills, analytical thought, and preparation for assessments and exams.

Atomi includes three main elements:



Curriculum specific content

Thousands of ready-made, syllabus specific videos, text lessons and quizzes to power learning beyond the classroom



Intelligent testing

Interactive quizzes that adapt in real-time, promote mastery learning and power intelligent revision recommendations



Focus on application

By focusing on how content will be assessed in exams, atomi shows you what it takes to get great marks

Every student learns differently

Atomi helps increase flexibility by enabling both class-paced and self-paced learning. Students that missed a lesson, have fallen behind or just aren't confident enough to raise their hand now have a real opportunity to get back on track and achieve their full potential.

How will students use Atomi?

Our teachers will guide students to make full use of Atomi in a range of ways across the year including:

- pre-class work
- post-class consolidation
- assessment preparation
- exam revision
- holiday homework
- study skills development

How will students access Atomi?

Atomi is accessed simply by logging into the atomi website: atomi.com.au. Every student has been provided with a unique account that helps to track their progress throughout each subject. Students can access Atomi anywhere and anytime there is an internet connection using their device of choice. There is no downloading of applications or software.

What can you do to support your HSC student?

We recommend you simply start by engaging in conversation about their Atomi account if you notice they are struggling with their coursework or don't know what to do next in their study program.

No knives at school – parent factsheet

Health and Safety Directorate

There is no good reason to bring a knife to school.

NSW now has the toughest knife laws in Australia. As a parent, you need to be aware of these laws, as you can also be charged if you allow your child to carry a knife.

No knives allowed at school under any circumstances

If a student has a knife at school the principal may call the police.

The student may be expelled or suspended immediately. Possessing a knife includes your child simply having one in their bag or locker. Having a knife for self-protection is also illegal. If you are concerned about your child's wellbeing or safety, contact the principal.

Tough penalties apply for children convicted of knife offences, including gaol sentences of up to 25 years if someone is injured with a knife during an assault.

Every child has the right to feel safe and secure at school. There is no good reason for a child to ever have a knife at school.

If you want to talk about children and knives at school, please contact the principal.

What kind of knives are prohibited?

As school policy is designed to keep all students safe, no type of knife is allowed at school. That means no butter knives or fruit knives in lunchboxes, or knife tools for craft purposes.

Flick knives, ballistic knives, sheath knives, push daggers, trench knives, butterfly knives and star knives are all prohibited.

Your child cannot bring to school any item that can be used as a weapon (such as a chisel).

In lessons requiring the use of knives, for example cooking or trades, your child's teacher will supply and supervise the use of the tools.

There are some senior subjects, such as hospitality, where children may be required to have their own knives.

Your child's school will advise you about these courses and the procedures for carrying knives legally to and from school.

The law makes parents responsible

You need to make certain your child is aware of the school's rules and the State laws about knives.

If you allow your child to carry or possess a knife at school or in a public place, you can be charged.

The police can search any child they suspect of having a knife. They can confiscate any dangerous object they might find during the search.

Your child must comply with such a police search, or they may be arrested and charged.

It is also illegal for anyone to sell a knife to anyone who is less than 16 years old

UNIFORM

A reminder of our uniform requirements as we return in 2023. Please visit the link below where you can see the Cromer Campus uniform requirements.

<https://nbccromer-h.schools.nsw.gov.au/about-our-school/uniform-shop.html>



Cromer Campus has opened a sustainable uniform store and we need your pre-loved uniforms. Reusable school uniform items can be delivered to the office drop box. The clothes will be recycled and offered for sale to students via the sustainable uniform store.

SUSTAINABLE SCHOOL SHOP 

**Thank you for supporting Cromer Campus by ensuring your child
attends school every day in school uniform.**

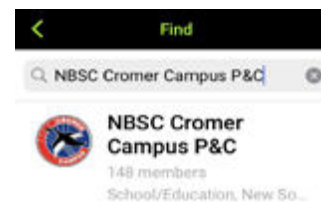
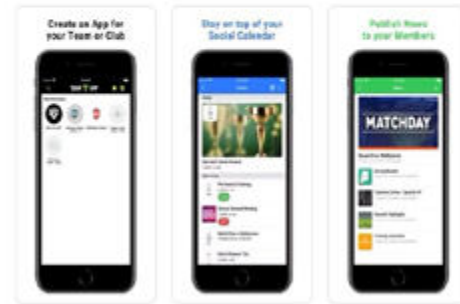
Cromer Campus P&C Association

Parents and Carers please join our **TEAMAPP** to ensure you are across all news and events and have quick links to resources such as uniform shop, parent portal, newsletters and Flexischools.



On your iPhone do the following:

1. Go to the APP STORE
2. Download TEAMAPP
3. **SIGN UP**
4. **FIND YOUR TEAM** - NBSC Cromer Campus P&C
5. Join, and choose the YEAR groups that child/ren belong to, plus any other groups of interest



Compulsory School Attendance

Information for parents

Education for your child is important and regular attendance at school is essential for your child to achieve their educational best and increase their career and life options. NSW public schools work in partnership with parents to encourage and support regular attendance of children and young people. When your child attends school every day, learning becomes easier and your child will build and maintain friendships with other children.

What are my legal responsibilities?

Education in New South Wales is compulsory for all children between the ages of six years and below the minimum school leaving age. The *Education Act 1990* requires that parents ensure their children of compulsory school age are enrolled at, and regularly attend school, or, are registered with the Board of Studies, Teaching and Educational Standards for homeschooling.

Once enrolled, children are required to attend school each day it is open for students.

The importance of arriving on time

Arriving at school and class on time:

- Ensures that students do not miss out on important learning activities scheduled early in the day
- Helps students learn the importance of punctuality and routine
- Give students time to greet their friends before class
- Reduces classroom disruption

Lateness is recorded as a partial absence and must be explained by parents.

What if my child has to be away from school?

On occasion, your child may need to be absent from school. Justified reasons for student absences may include:

- being sick, or having an infectious disease
- having an unavoidable medical appointment
- being required to attend a recognised religious holiday
- exceptional or urgent family circumstance (e.g. attending a funeral)

Following an absence from school you must ensure that within 7 days you provide your child's school with a verbal or written explanation for the absence. However, if the school has not received an explanation from you within 2 days, the school may contact you to discuss the absence.

Principals may decline to accept an explanation that you have provided if they do not believe the absence is in the best interest of your child. In these circumstances your child's absence would be recorded as unjustified. When this happens the principal will discuss their decision with you and the reasons why.

Principals may request medical certificates or other documentation when frequent or long term absences are explained as being due to illness. Principals may also seek parental permission to speak with medical specialists to obtain information to collaboratively develop a health care plan to support your child. If the request is denied, the principal can record the absences as unjustified.

Travel

Families are encouraged to travel during school holidays. If travel during school term is necessary, discuss this with your child's school principal. An *Application for Extended Leave* may need to be completed. Absences relating to travel will be marked as leave on the roll and therefore contribute to your child's total absences for the year.

In some circumstances students may be eligible to enrol in distance education for travel periods over 50 school days. This should be discussed with your child's school principal.



My child won't go to school. What should I do?

You should contact the principal as soon as possible to discuss the issue and ask for help. Strategies to help improve attendance may include a referral to the school's learning and support team or linking your child with appropriate support networks. The principal may seek further support from the Home School Liaison Program to develop an Attendance Improvement Plan.

What might happen if my child continues to have unacceptable absences?

It is important to understand that the Department of Education and Communities may be required to take further action where children of compulsory school age have recurring numbers of unexplained or unjustified absences from school.

Some of the following actions may be undertaken:

- Compulsory Schooling Conferences

You may be asked, along with your child, to attend a Compulsory Schooling Conference. The conference will help to identify the supports your child may need to have in place so they attend school regularly. The school, parents and agencies will work together to develop an agreed plan (known as Undertakings) to support your child's attendance at school.

- Application to the Children's Court – Compulsory Schooling Order

If your child's attendance at school remains unsatisfactory the Department

may apply to the Children's Court for a *Compulsory Schooling Order*. The Children's Court magistrate may order a Compulsory Schooling Conference to be convened.

- Prosecution in the Local Court

School and Department staff remain committed to working in partnership with you to address the issues which are preventing your child's full participation at school. In circumstances where a breach of compulsory schooling orders occurs further action may be taken against a parent in the Local Court. The result of court action can be the imposition of a community service order or a fine.

What age can my child leave school?

All New South Wales students must complete Year 10 or its equivalent. After Year 10, and up until they reach 17 years of age, there are a range of flexible options for students to complete their schooling.

Working in Partnership

The Department of Education and Communities recognises that working collaboratively with students and their families is the best way to support the regular attendance of students at school.

We look forward to working in partnership with you to support your child to fulfil their life opportunities.

If a student misses as little as 8 days in a school term, by the end of primary school they'll have missed over a year of school.

Further information regarding school attendance can be obtained from the following websites:

Policy, information and brochures:

Please visit the Department of Education's *Policy library*

The school leaving age:

Please visit the Department of Education's *Wellbeing and Learning* website

Do you need an interpreter?

Interpreting services are available on request, including for the hearing impaired. The Telephone Interpreter Service is available 24 hours a day, seven days a week on 131 450. You will not be charged for this service.

For further advice and questions contact your educational services team

T 131 536

Learning and Engagement

Student Engagement & Interagency Partnerships

T 9244 512

www.dsc.nsw.gov.au

© February 2015
NSW Department of Education and Communities

NBSC Cromer Campus Mobile Policy 2022



NBSC CROMER CAMPUS

Use of Mobile Communication Devices and Online Services Procedure (*Mobile Communication Devices include mobile phones, smart watches etc*)

Purpose

This procedure guides student use of mobile communication devices and online services at school.

Our school acknowledges that students may want to bring a mobile communication device to school for a variety of reasons.

Our school also recognizes the harm that maybe caused if used inappropriately and that we need to support our students to use mobile communication devices in safe, responsible and respectful ways.

Scope

This procedure provides a consistent framework for the use of Mobile Communication Devices in our school. It sets out shared responsibilities of school staff, students and parents /carers. It also provides a framework to manage potential misuse of mobile communication devices.

This procedure covers student use of Mobile Communication Devices and online services in school related settings, including on school grounds, at school related activities, (i.e. school excursions etc) and outside of school where there is a clear and close connection between the school and the conduct of students.

Our School's Approach.

Students are discouraged from bringing mobile communication devices to school.

Mobile communication devices are not used or required in any classroom for any learning activities. BYOD, (i.e. laptop computers) are used for these purposes.

If a student chooses to bring a mobile communication device to school, the student is responsible for ensuring the phone is switched off and stored in their school bag during all scheduled activities. This will include classes, incursions, assemblies, year meetings and study periods.

Students who bring mobile communication devices to school do so at their own risk. The school will not accept any responsibility for the loss or damage to mobile communication devices.

Harmful effects of inappropriate mobile communication device use include:

- Lack of student engagement in learning tasks
- Loss of learning opportunities
- Bullying, intimidating or otherwise harassing through SMS or text messaging or through photographic, video or other data transfer systems available on the phone
- Recording of conversations without the knowledge and permission of those involved in the conversation
- Downloading or accessing inappropriate material on the internet
- Filming of any physical interactions between students that occur during the school day or to and from school

Consequences for Inappropriate Use

Consequences may include, but are not limited to:

- Mobile communication device being confiscated. (the device is stored in the School Office and collected at the end of the day)
- Letter home to parents
- Phone call to parents
- Parents called to school for an interview with the student present
- Classroom isolation

NBSC Cromer Campus Mobile Policy 2022 (Continued)

- Application of the school's Welfare and Discipline Policy

For detailed information regarding the school's procedures on managing mobile communication devices see Appendix 1,2,3 (attached)

Contact between students and parents / carers during the school day.

Parents / carers:

Parents and carers are expected to only contact their children via the School Office.

Students:

If a student needs to make a phone call during the day, it must be during the scheduled breaks of recess or lunchtime.

Responsibilities and Obligations:

Students:

- Mobile communication devices are off and away all day
- Respect and follow the school procedures and the actions taken by staff
- Be responsible and respectful users of mobile communication devices and online services and support peers to be the same
- Communicate respectfully with peers, school staff and the school community.

Parents / Carers

- Support the implementation of the school's procedures, including its approach to resolving issues
- Recognize the role they play in educating their children and modelling the behaviours that underpin the responsible and respectful use of mobile communication devices.
- Take responsibility for their child's use of mobile communication devices and online services at home
- Monitor your child's mobile communication device use and online presence
- Switch off mobile communication devices when attending school functions or meetings.

Principal and Teachers

- Establish whole school expectation of mobile communication devices: off and away all day
- Educate students of inappropriate use of mobile communication devices
- Respond to and report any breaches and incidents of inappropriate mobile communication devices use. This includes:
 - reporting the creation, possession or distribution of indecent or offensive material to the Incident Support and Report hotline
 - working with the eSafety Commissioner to resolve cases of serious on line bullying or image based abuse
- support parents and carers to understand strategies that support responsible and respectful use of mobile communication devices

Non- Teaching Staff

- be aware of the school's procedures in relation to mobile communication devices
- report any inappropriate use of mobile communication devices to the principal, school Executive or school staff they are working with.

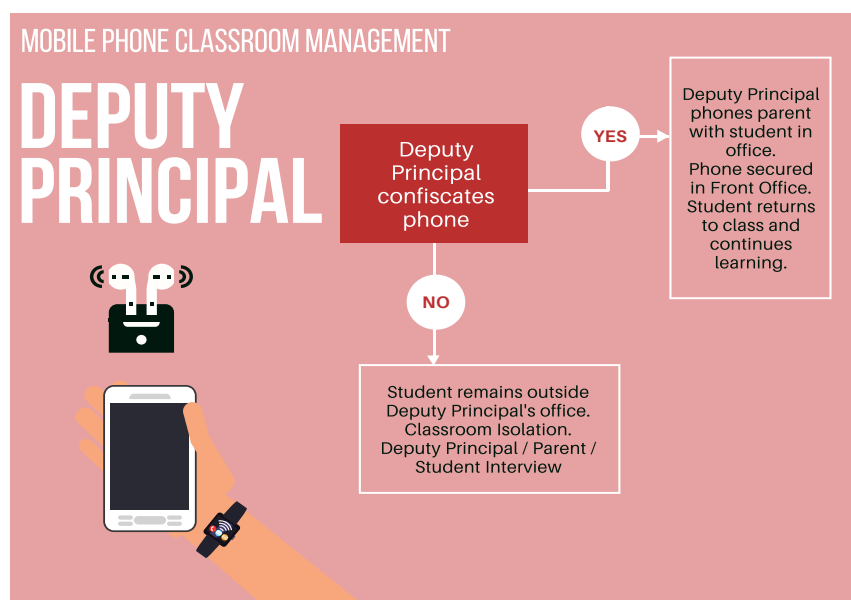
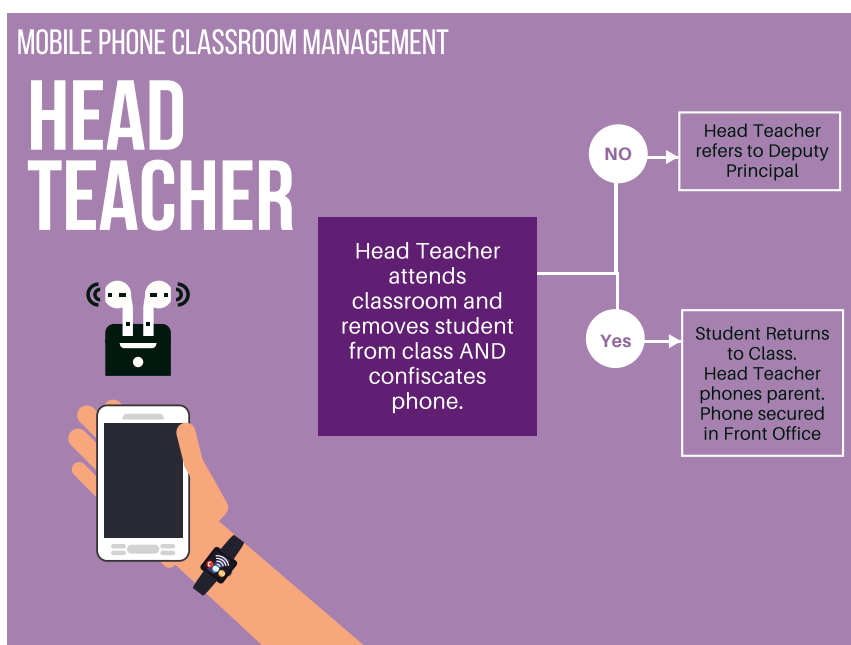
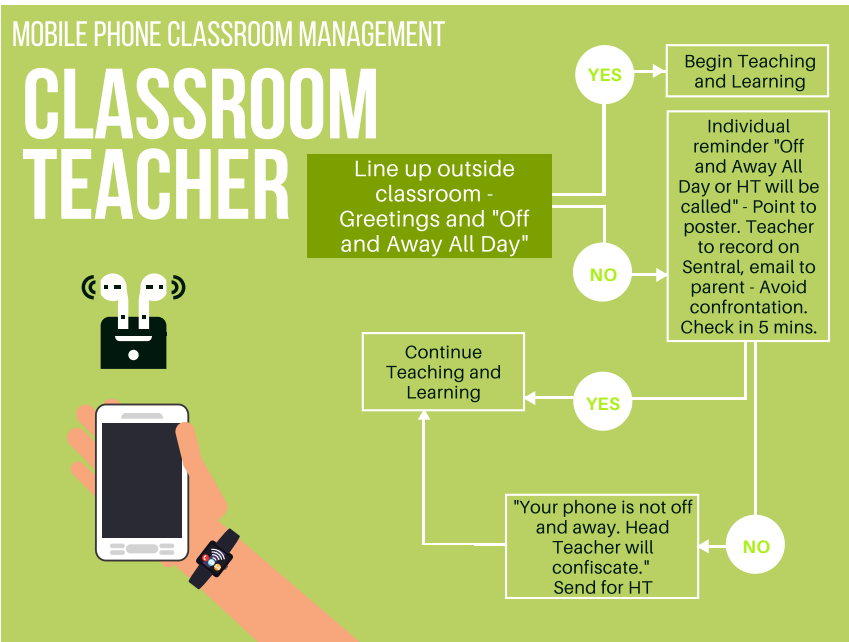
(Please see posters on following pages)



OFF & AWAY ALL DAY

Turn your phone /
smart watch off
and put it and
your headphones
in your bag





School Travel

Term 4 2022

2023 school travel applications are now open

Applications for student travel in 2023 open from **Monday 10 October 2022**.

Students who need a School Opal card or travel pass for 2023 can [apply](#) now. A new application will need to be submitted if they are applying for the first time, or if they are requesting an additional travel entitlement as a result of a new shared parental responsibility situation (e.g. joint custody).

Students who change address, school, campus location, have repeated a year or received an expiry notification from Transport for NSW for their school travel entitlement should [renew or update](#) their details before **the end of term 4**. This will ensure that schools can endorse applications, and entitlements remain valid for the start of the 2023 school year. School Opal card holders will have the changes applied to their existing card.

If a student's distance eligibility has changed based on their grade (i.e. grade two to grade three), the system will automatically update their entitlement if they meet the new criteria. If they do not meet the new [eligibility criteria](#), we will send an expiry notification via email.

Students who have an entitlement approved under a medical condition that is due to expire will receive a notification advising them to re-apply.

[Term Bus Pass](#) holders will receive a notification to re-apply.

Students in the Opal network applying for an Opal card (including a Term Bus Pass) for the first time will receive their Student Opal card at their nominated postal address. Cards will be mailed out from January 2023.

Students living in rural and regional (R&R) areas should receive their travel pass at the start of the new school year from their nominated transport operator. It may come via the school or be sent directly to them at home. **Note:** some R&R operators do not issue travel passes. Students/parents should confirm with their nominated operator if they do not receive a pass.

Travel from Term 1 2023

We ask that parents plan ahead and make sure their child knows which service/s to use and has a valid ticket to travel; either a School Opal card or Child/Youth Opal card (within Greater Sydney) or a School Travel Pass (outside Greater Sydney), from the start of the school year.

Applications for 2023 School Student Transport Scheme (SSTS) travel open at the start of Term 4 2022, so parents/students can [apply](#) or [update](#) details early and be ready for the start of the new school year.

Most students using the Opal network will not need a new Opal card and can continue travelling on their existing card each year.

The start of the year is a busy period for local transport operators, and students travelling without a valid ticket make service planning and operations difficult.

We recognise that for some families last minute changes to school enrolments mean they may not have a School Opal card or Travel Pass for the start of term. In the Opal network, we strongly encourage these families to have their children travel with a Child/Youth Opal card until they receive their valid School Opal card. If outside Greater Sydney, parents should contact their [local bus operator](#) to discuss their travel needs.

Bus operators are flexible and understanding, particularly at the start of the school year, and will ensure students can travel safely to and from school. But to best support our operators we encourage all students to have a valid ticket, as early as possible, from the start of the school year.

Students using School Opal cards are also reminded that they must tap on and tap off in line with the [Student code of conduct](#) and [Opal terms of use](#).



Further information can be found at transportnsw.info/travel-info/using-public-transport/school-travel

Enquiries can be submitted at transportnsw.info/contact-us/feedback/passes-concessions-feedback

Wellbeing and Safety of Cromer Campus Student Drivers and their Passengers



As is the case with many secondary schools, more and more of our senior students are driving to and from school. While most young drivers are careful, safety conscious and considerate when driving, they are one of the most vulnerable road user groups. Travelling with teenage passengers adds to the risk for these young drivers.

With this in mind, Cromer Campus has a responsibility to take all reasonable measures to ensure the wellbeing and safety of students. Our *Student Driving Policy* outlines what we expect from student drivers and their passengers. A copy of the policy is available on our school web site or can be obtained from the school office.

A *Parent Permission and Student Agreement Form* for both drivers and passengers can also be found on the school web site or obtained from the school office. All student drivers and parents/guardians are required to sign this form and return it to the school.

Please note: There is no parking available for students on school grounds.

Cromer Campus 2020 Policy for Students Driving Cars to School plus the permission and agreement forms are available on pages 18 & 19 of this Cromer Courier.





Cromer Campus Policy for Students Driving Cars to School

Any student who holds a valid NSW licence and intends to drive to school, either on a regular basis or occasionally, must comply with the school policy and is required to complete the Parent Permission and Student Agreement Form.

Cromer Campus Policy:

1. Students are required to adhere to all road rules and drive in a safe and responsible manner.
2. Student licence details and car make and registration must be recorded with the school.
3. Students are only to use their car for travelling to and from school.
4. Students are not permitted to go to their car during the school day.
5. Students are not to use their cars at lunchtime or in their study periods
6. Students are not permitted to carry other students as passengers to and from school or school events without the written permission of their parent/guardian and the passenger's parent/guardian. The Passenger Permission Form must be completed and submitted to the office.
7. Students are required to notify the school of any passenger who may be travelling with them to and from school as per the Passenger Permission Form.
8. Student drivers, a parent/guardian and, if relevant, the parent/guardian of any passenger, must sign the Parent permission and Student Agreement Form.
9. Cromer Campus does not have space available for student parking. Consequently no student is permitted to park their car within the school grounds.
10. The school's Welfare and Discipline Policy will apply where students fail to meet these obligations. Any unsafe driving behaviour or breaches of road rules will be reported to the police.



Cromer Campus Passenger Permission Form

This form must be completed by a parent/guardian of any student intending to travel to school as a passenger of a student of Cromer Campus who drives a car to and from school unless this student has permission on the original Parent Permission and Student Agreement Form.

I give approval for

Student Passenger's Name: _____

to travel with

Student Driver's Name: _____

We accept all conditions detailed in the Cromer Campus Policy for Students Driving Cars to School.

Parent/Guardian of Student Passenger

Name: _____

Parent/Guardian Signature: _____

Date: _____

Student Passenger

Name: _____

Student Signature: _____

Date: _____

School Approval:

Approved By: _____

Signature: _____

Date: _____

Cromer Campus Students Driving Cars to School Policy 2020



Cromer Campus Parent Permission and Student Agreement Form

***Note:** A photograph of the student's driver licence must be attached to this form.

This form must be completed by any student who intends to drive to school either occasionally or regularly.

Student Name: _____

Car Make/Model: _____

Colour and Registration Number: _____

Note: If the student intends to drive any car other than the one registered on this form, it must also be registered with the school.

Parent Permission

I give permission for _____

to drive to school and, if indicated on the reverse of this form, take the passengers indicated on this form. I am aware of the Cromer Campus Policy for Students Driving Cars to School. **I have seen the completed Cromer Campus Passenger Permission form for the student/s identified on this form.**

Name of Parent: _____ Date: _____

Signature of Parent/Guardian: _____ Date: _____

Student

I agree to adhere to all road rules and drive in a safe and responsible manner and follow the Cromer Campus Policy for Students Driving Cars to School.

Signature of Student:

_____ Date: _____

School Approval:

Approved By: _____

Signature: _____ Date: _____

Names of Students with completed Cromer Campus Passenger Permission forms approved to travel with

_____ Name of Driver.

- 1.
- 2.
- 3.
- 4.



To the School Principal / Headmaster

Conditions of use – Student Opal Card

I write to request your assistance in promoting the importance of using the Student Opal Card correctly.

It is a condition of use that students tap on at the start and tap off at the end of each trip with their Student Opal Card. This is important to ensure accurate patronage data is recorded. This data is used to plan school special and regular route bus services and assists State Transit in ensuring adequate capacity is provided, so students can travel to and from school safely.

Current statistics indicate that many students have failed to tap on or off the Opal readers when travelling. If students do not tap on and off the school bus service, it may appear under-utilised and may be considered for cancellation, based on low passenger numbers.

To assist with our future service planning can you please remind parents and students of this important condition of use so State Transit can continue to provide effective bus services in the future.

For more information and to apply for a School Opal card call 131500 or apply online at <https://www.opal.com.au/en/about-opal/opal-for-school-students>

Thank you for your assistance.

Yours sincerely

Patrick Wu
Customer Operations Manager
Brookvale Depot
State Transit Authority
Ph: 9941 5864
Mob: 0429994138
Patrick_wu@sta.nsw.gov.au



An important message about our response to COVID-19

The health and safety of our staff and students is of the utmost importance to our school.

We have implemented a range of measures to help keep our school healthy and reduce the spread of infection and illness. Some simple measures we ask that you adopt include:



Before entering our school

If you have been unwell, with symptoms such as a high temperature, cough, sore throat, and/or shortness of breath, please don't visit our school. Please contact our office to speak to one of our staff.

Ph:



Increase hygiene practices

We request that all staff, students and visitors follow increased personal hygiene practices through regular and thorough hand washing and coughing or sneezing into your elbow or tissue, and disposing of tissues.



Maintaining a healthy distance

For the health and wellbeing of our staff and students, please stand at least **1.5 metres** apart while waiting in our office. Our visitors are encouraged to wait outside for their turn to speak with our office staff. We are also applying social distancing requirements across all areas of the school as is reasonable and practical.



Support for our staff

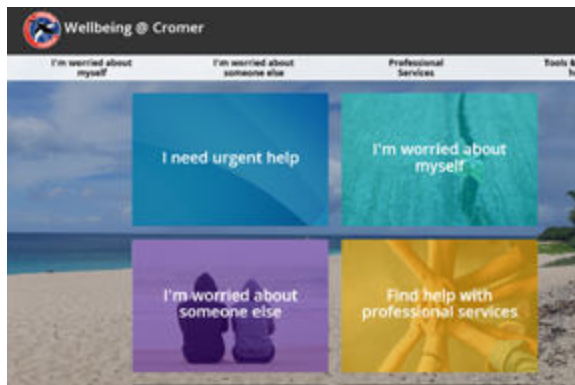
We appreciate your patience and support while we work together to minimise the impact of COVID 19 in our community.

We know this is a difficult time and we are doing all we can to support our staff and students.

Search Inside the Department for up-to-date information and resources.

education.nsw.gov.au





The WELLBEING@CROMER link is on the front page of the school website.

It contains information, resources and links to support the wellbeing of our students and families.



A further wellbeing initiative is the creation of a whole school Google classroom called:

Wellbeing at NBSC Cromer Campus

The code for this classroom is: **b2dgcwk**

This classroom will be regularly updated with resources and is open to students and parents.

