



Cromer Courier

CROMER CAMPUS NEWSLETTER

Respect • Responsibility • Success



<http://www.nbsc Cromer-h.schools.nsw.edu.au>

nbsccromer-h.school@det.nsw.edu.au

Telephone: 9981 1155

120 South Creek Road CROMER NSW 2099

TERM 1 2022 START DATES

Tuesday 1 February - Years 7, 11 & 12
Wednesday 2 February - Years 8, 9 & 10



FROM THE PRINCIPAL

Term 4 2021

THANK YOU



By **JUSTIN HONG**
Principal
NBSC Cromer
Campus

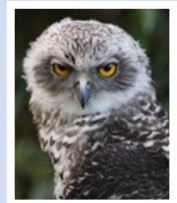
As we come to the end of the 2021 school year I don't want to talk about how tough it has been or how unpredictable and uncertain the year has been. What I want to say is THANK YOU. Thank you to every student, every teacher, every parent for a job well done in 2021. A story I want to share which I believe encapsulates our Cromer Campus school community is the amazing and compassionate support shown by our P&C. In the middle of lockdown I was approached by the P&C who wanted to help those families we knew were really struggling.

IN THIS ISSUE

HSIE Everyday Life in the Medieval Ages (P6)



Maths in the Bush! (P8)



Year 12 Visual Arts Major Works (P10)



HSIE Year 10 - Big History (P3)

HSIE Australian Geography Competition (P4)

Duke of Edinburgh Info Nights (P14)

Principal's report continued...

Graciously and generously the P&C wanted to send out relief through gift vouchers to families needing some extra help. I am extremely proud to be the Principal of a school community that rallies and supports one another in the toughest of times. We have that support and goodwill in our Cromer Campus school community. This is but one of many examples and I encourage you to share the many stories and examples you know of. I thank our P&C for this initiative and I thank every parent for their ongoing support of our great school and your child's education in 2021.

Retirements

Sadly at this time of year we are always farewelling some of our long serving members of staff who are retiring from teaching. I want to acknowledge and thank Mrs Allie Emo (Head Teacher HSIE), Mr Peter Whittaker (TAS teacher) and Mrs Dianne Leeson (TAS Teacher) who after many years of dedicated service to our school and to your children are retiring from teaching. I wish you all on behalf of a grateful school community a long, healthy, and enjoyable retirement.

2022 – Change for Thursdays

Earlier this term I surveyed the entire parent community about a change to Thursdays in 2022. From the beginning of next year our Thursday school day will finish slightly earlier at 2:10pm. Supervision will be provided for any student that needs to stay at school while waiting for a bus. This change has become necessary due to the growth of our school. Next year our student enrolment has grown to just over 1000 students.

2022 – A Better Year Ahead

Excitingly the school COLA project has been approved with construction set to begin in 2022. This new facility is a roof and new surface over our existing two outdoor basketball courts. It will also be used as an additional wet weather area for students and possibly an assembly area for the school.

An upgrade of our administration block has also been approved which will provide an improved facility for our extremely hard-working front office ladies and office upgrades to some of our staff and parent meeting rooms.

Also, in 2022 the council are taking over maintenance of our school oval. This will involve the installation of light towers and an upgrade to the surface to bring its standard up to that of the ovals across the road.

Operationally, there was good news today with some currently restricted school activities such as singing and using wind instruments approved for next year. You can expect an email from the school in late January with more detailed information about school operational matters in 2022. Finally, can I extend my heartfelt best wishes to all students and families, a Merry Christmas and a happy new year. Please have a safe and restful school holiday. I thank you again for 2021 and am very much looking forward to 2022.

Justin Hong
Principal

HSIE FACULTY

Year 10 Elective History



Big History

In Term 4, students in Year 10 Elective History worked on the Big History Scheme through Macquarie University. This course looks at the origins of the universe and our place within it, examining how we know what we know about the universe and what 'excellent practice' in research is. Students worked furiously to complete this project in class since returning from online learning, completing a combination of readings, video content and online assessment modules.

Well done to the students who have completed this course, which has awarded them an additional 3 ATAR points for applying to Macquarie University at the end of their HSC.

HSIE FACULTY

Australian Geography Competition



Well done to all students who participated in the Australian Geography Competition earlier this year. The competition required students to use their abilities to recall, recognise, describe and provide examples of the foundational geographical concepts.

In 2021, a record number of our students achieved Distinctions and High Distinctions. Those students who achieved a Distinction are ranked in the top 20% of Australian high school students, while those who gained an outstanding High Distinction are ranked within the top 10% of Australia. We are also very proud to announce that one exceptional student is ranked within the top 1% of Australian high school students. Congratulations to all these talented and knowledgeable students.

TOP 1% IN AUSTRALIA

Ella Spedding Year 7

HSIE FACULTY

Australian Geography Competition

HIGH DISTINCTION AWARDS

Year 7		Year 9
Max Giles		Anthony Dean
Zoe Hill	Year 8	Zachary Jones
Nathan McKeever	Hayley Forde	Izzy Raj-Seppings
Stella Morrison	Shanti Goddard	Ryan Sedevcic
Isaac Pudney	Willow Solomons	
Zander Slade	Kelsi Stamopoulos	Year 10
Zoe Stringer		Fynn Brown
Ned Trueman		Caitlin Groom
		Madison Maloy

DISTINCTION AWARDS

Year 7	Year 8	Year 9
Kathleen Brooks	Samuel Attana	Serena Bayani
Eva Carlow	Gaurav Bhalla	Sophia Berne
Maxim Clements	Chloe Brewin	Ben Comber
Matthew Davies	Stephanie Davies	Jessica Davies
Sebastian Hill	Sophia Flett	Isla Herriott
Bailey Hunt	Elise George	Jilly Locke-Nguyen
Harrison Lass-Sanchez	Dean Landers	Zoe Scholtens
Riki Petersen	Joel McManus	Chamonix Van Vuuren
Hayley Swan	Maxim Nechaev	
	Lachlan Palazzi	
	Lily Sollitt	
	Keilana Stoten	
Year 10		Year 11
Orlando Lee		Riley Cronan
Charlotte Mace		
Kyle Renshaw		
Mark Westrup		
Kexin Xu		

HSIE FACULTY

Everyday Life in the Medieval Ages



Elective History Year 9

Students studying Elective History in Year 9 took on the challenge of summarising their knowledge in a creative assessment task at the end of Term 2. The quality of the work was outstanding, with students using all elements of their box perimeters to their visual advantage. Both Mr Delrennie and Ms Emo were very impressed with the quality of the students work and found marking them a positive experience.



HSIE FACULTY

Everyday Life in the Medieval Ages



Coolmaths@cromercampus

Maths in the Bush!!!



During Week 10, students from 7O and Year 7 Integrated students braved the wilds of Ku-Ring-Gai Chase National Park and successfully completed the five- kilometre hike from Turramurra North to the Gibberagong Environmental Education Centre (EEC) at Bobbin Head.



After clocking up over 11,000 steps (thanks Ms McLachlan for counting!), the students skilfully negotiated the steep and rocky descent to Cowan Creek, just as El Nina arrived! Thankfully, Mr David Smith, Principal of Gibberagong EEC, was on hand to greet us, and kindly opened up the top floor of the EEC for an indoor picnic lunch.



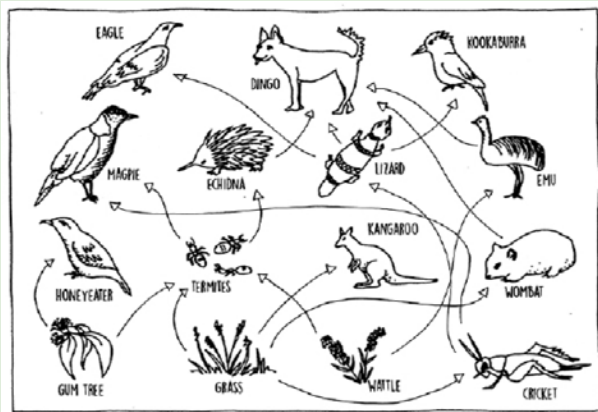
Question: How do you find the nest of a Powerful Owl – by looking up, or looking down?

Answer: By looking **DOWN** – Look at the ground. If you see a big round patch of white bird poo, and a severed possum head, you have found your Powerful Owl!

Enjoy your Lunch!



And congratulations to Jack on his original drawing of "Larry the Turtle", winning the Twenty-Twenty-One Archi-Dot-Art "Peoples' Choice" Award by a unanimous vote!



Typical Australian Food Web.
Source:



CAPA FACULTY

Year 12 Visual Art

Congratulations to the Visual Arts class of 2021. I am very proud of their hard work and commitment to achieving outstanding Bodies of Works for their HSC. Despite experiencing significant challenges, the students were able to express their creative ideas in a range of expressive forms. Some students focused on traditional artmaking practices such as painting and drawing whereas others explored more contemporary mediums like graphic design, digital drawing and photography. Students were able to master their practical artmaking skills as well as conceptually explore a topic of interest.

A special congratulations to both Neven and Zoe who have had their works selected to be displayed at the Manly Art Gallery in the "Express Yourself" exhibition in 2022.

Well done Year 12,
Ms Marsters :)



CAPA FACULTY

Year 12 Visual Art



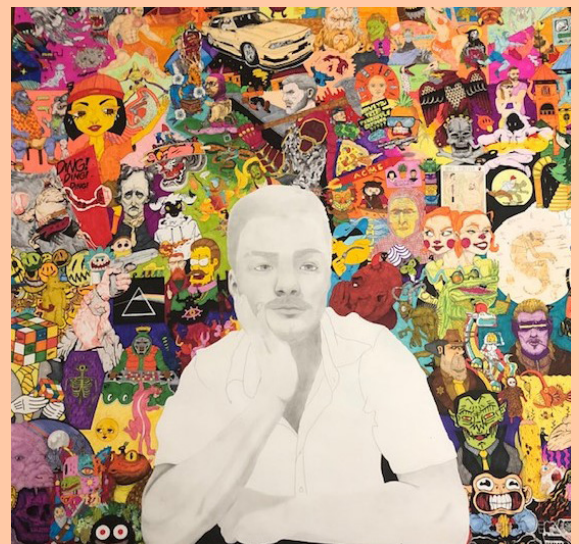
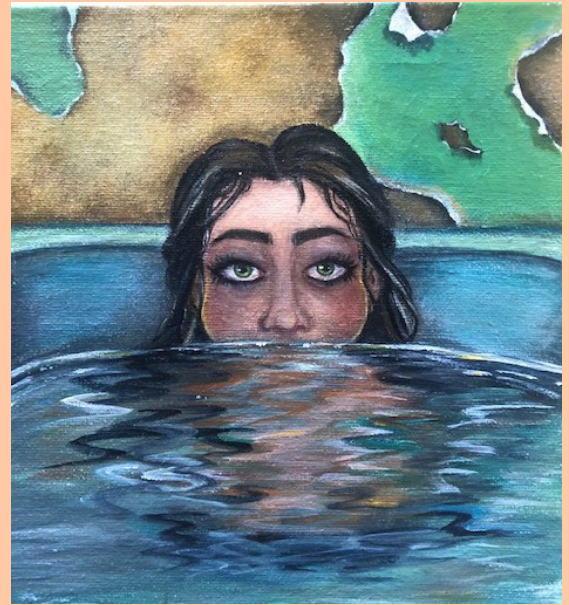
CAPA FACULTY

Year 12 Visual Art



CAPA FACULTY

Year 12 Visual Art



Proud to deliver



The Duke of Edinburgh's International Award

BRONZE

INFO NIGHT 2022

Offered to Year 9 students across the College in 2022

6.00pm

Wednesday February 9th

NBSC Freshwater Senior Campus Gymnasium

SILVER & GOLD INFO NIGHT

5.30pm Thursday Feb 10th

NBSC Freshwater Senior Campus Theatre

More Information? Chat with the College Duke of Edinburgh Award Coordinator,
Ms. Lyndsay Dowsett lyndsay.dowsett2@det.nsw.edu.au 02 9939 6942
www.nbsc.schools.nsw.gov.au/college-opportunities



SCAN ME

No knives at school – parent factsheet

Health and Safety Directorate

There is no good reason to bring a knife to school.

NSW now has the toughest knife laws in Australia. As a parent, you need to be aware of these laws, as you can also be charged if you allow your child to carry a knife.

No knives allowed at school under any circumstances

If a student has a knife at school the principal may call the police.

The student may be expelled or suspended immediately. Possessing a knife includes your child simply having one in their bag or locker. Having a knife for self-protection is also illegal. If you are concerned about your child's wellbeing or safety, contact the principal.

Tough penalties apply for children convicted of knife offences, including gaol sentences of up to 25 years if someone is injured with a knife during an assault.

Every child has the right to feel safe and secure at school. There is no good reason for a child to ever have a knife at school.

If you want to talk about children and knives at school, please contact the principal.

What kind of knives are prohibited?

As school policy is designed to keep all students safe, no type of knife is allowed at school. That means no butter knives or fruit knives in lunchboxes, or knife tools for craft purposes.

Flick knives, ballistic knives, sheath knives, push daggers, trench knives, butterfly knives and star knives are all prohibited.

Your child cannot bring to school any item that can be used as a weapon (such as a chisel).

In lessons requiring the use of knives, for example cooking or trades, your child's teacher will supply and supervise the use of the tools.

There are some senior subjects, such as hospitality, where children may be required to have their own knives.

Your child's school will advise you about these courses and the procedures for carrying knives legally to and from school.

The law makes parents responsible

You need to make certain your child is aware of the school's rules and the State laws about knives.

If you allow your child to carry or possess a knife at school or in a public place, you can be charged.

The police can search any child they suspect of having a knife. They can confiscate any dangerous object they might find during the search.

Your child must comply with such a police search, or they may be arrested and charged.

It is also illegal for anyone to sell a knife to anyone who is less than 16 years old

I respect and acknowledge Aboriginal people as the traditional custodians of the lands and waters on which we work and live

Reporting retailers of illegal nicotine e-cigarettes

Electronic cigarettes or e-cigarettes are battery operated devices that heat a liquid (or e-liquid) to produce a vapour to inhale. Using an e-cigarette is sometimes called 'vaping'.

E-cigarettes come in many shapes and sizes and can be made to look like everyday items including lighters, pens or USB memory sticks. E-liquid contains a range of chemicals or flavours, and often contains nicotine.

In NSW, the sale of e-cigarettes and e-liquids that contain nicotine is illegal. Selling tobacco or e-cigarettes to minors is also illegal. NSW Health is seeing an increase in the sale of nicotine containing e-cigarettes, including to minors.

NSW Health takes non-compliance with tobacco and e-cigarette laws seriously and NSW Health officers undertake inspections of retailers to ensure they are complying with the laws.

If you think a retail store is selling e-cigarettes that contain nicotine, or selling any tobacco or e-cigarette products to minors, please report it to NSW Health by completing the online reporting form: <https://www.health.nsw.gov.au/tobacco/Pages/let-us-know-reports-complaints.aspx>, or by calling the Tobacco Information Line on 1800 357 412.

Further information on e-cigarette is available on the NSW Health website at: www.health.nsw.gov.au/tobacco/Pages/e-cigarette-young-people.aspx

Cromer Campus P&C Association

Parents and Carers please join our **TEAMAPP** to ensure you are across all news and events and have quick links to resources such as uniform shop, parent portal, newsletters and Flexischools.

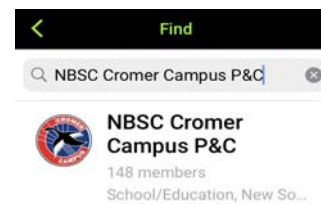
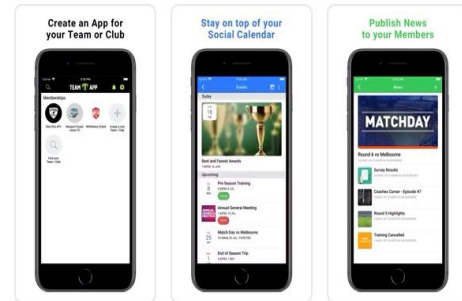


Team App
Sports Team...
★★★★☆ 7.1K

OPEN

On your iPhone do the following:

1. Go to the APP STORE
2. Download TEAMAPP
3. **SIGN UP**
4. **FIND YOUR TEAM** - NBSC Cromer Campus P&C
5. Join, and choose the YEAR groups that child/ren belong to, plus any other groups of interest



Shop Hours:
Tuesday: 8:00am – 12:00pm
Thursday: 12:00pm – 4:00pm

NBSC Cromer Campus Uniform Shop

		<u>QTY</u>	<u>Size</u>
Girls			
Junior Girls White Blouse/navy Piping	32.00		
Senior Girls Sky Blouse	30.00		
Junior Girls Tartan Skirt	50.00		
Senior Girls Navy Skirt	50.00		
Stretch Navy Slacks	39.00		
Boys			
Senior Boys Shirt	32.00		
Junior/Senior Grey Elastic Waist Shorts	30.00		
Junior/Senior Grey Elastic Waist Pants	30.00		
Junior Boys White Polo	28.00		
Senior Sky Polo	28.00		
Unisex			
School Jacket (limited stock – discontinued item)	60.00		
Softshell Jacket	72.00		
V-Neck Sloppy Joe	38.00		
Jumpers			
Wool Jumper	70.00		
Sports			
Sport Shorts	30.00		
Trackpants	45.00		
Sports Polo			
	35.00		
Others			
White Socks Regular x 5	20.00		
School Tie	20.00		
Black Winter Stockings	10.00		
Dark Navy Winter Stockings	10.00		
New School Cap	12.00		

Coivd-19 Uniform Shop Operation.

Daylight Uniform Shop will operate under normal shop hours.

Cromer Campus is promoting Online orders and student purchases only. Online Ordering is via

<http://daylightsportswear.com/cromer/>

Please have your student bring a copy of the Online Order to the uniform shop for collection
Or

Have the student bring your order form to the Uniform shop to be processed and collected.

From: Patrick Wu <Patrick_Wu@sta.nsw.gov.au>
Sent: Wednesday, 24 February 2021 1:04 PM
Subject: School bus service changes from Monday, 1 March 2021



NBSC Cromer Campus

We'd like to tell you about further improvements being made to Northern Beaches and Lower North Shore bus services.

We are pleased to let you know that starting on Monday 1 March 2021, Transport for NSW will introduce a number of bus service adjustments to address some of the key issues raised following the December 2020 network changes. This is in addition to the changes made on 10 February 2021.

The introduction of these bus service adjustments is in response to feedback received from schools, parents, local MPs and other customers since we made the initial changes to the network last year.

These adjustments are being made to the bus network to help make journeys easier for school students. The improvements include reinstated school bus routes, new and extended bus services, and articulated – or 'bendy' – buses added to some existing routes to increase capacity.

The change that will benefit students attending Cromer High is:

Route	Changes
637n	The existing 7:34am trip departing Beacon Hill to Pittwater High School will be operated by an articulated – or 'bendy' – bus. Changing to the larger bus type will provide greater capacity for school students and other customers.
690n	To accommodate the travel needs of students who cannot get on school bus 601n, the current school bus 690n which commences at Griffin & Abbott Rd at 8.14 am and finished at Cromer High at 8.28 am will start 10 minutes early (at 8.04 am) from 19th April 2021.

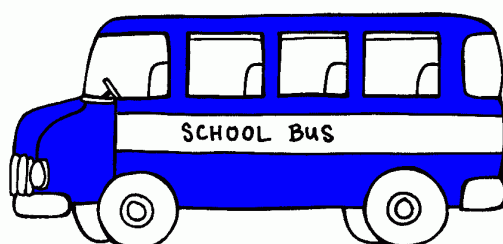
Current information on afternoon buses from Cromer:

Start Place	Start	End Place	Route	Schedule Time	Stand
Cromer High School	15:05	Warringah Mall - Pittwater Road	600n	15:05	A
Cromer Primary	15:00	Manly Wharf	601n	15:04	A
Cromer Primary	15:00	Frenchs Forest	602n	15:04	B
Cromer High School	15:05	Warringah Mall - Pittwater Rd	603n	15:05	B
Cromer High School	15:05	Telopea & Hilma Collaroy Plateau	604n	15:05	B
Cromer High School	15:10	Mater Maria Warriewood	648n	15:10	C
Cromer Primary	15:00	South Creek Rd & Pittwater Rd	676n	15:05	C
Cromer High School	15:05	St Lukes Dee Why	684n	15:05	A
Cromer High School	15:05	Cromer Heights	768n	15:05	C

To find out more or to plan a trip, please visit <https://transportnsw.info/trip>.

Patrick Wu
 Customer Operations Manager
 Brookvale Depot
 State Transit Authority

Ph: 9941 5864
 Mob: 0429994138
www.sydneybuses.info



NBSC Cromer Campus Mobile Policy 2021



NBSC CROMER CAMPUS

Use of Mobile Communication Devices and Online Services Procedure (*Mobile Communication Devices include mobile phones, smart watches etc*)

Purpose

This procedure guides student use of mobile communication devices and online services at school.

Our school acknowledges that students may want to bring a mobile communication device to school for a variety of reasons.

Our school also recognizes the harm that maybe caused if used inappropriately and that we need to support our students to use mobile communication devices in safe, responsible and respectful ways.

Scope

This procedure provides a consistent framework for the use of Mobile Communication Devices in our school. It sets out shared responsibilities of school staff, students and parents /carers. It also provides a framework to manage potential misuse of mobile communication devices.

This procedure covers student use of Mobile Communication Devices and online services in school related settings, including on school grounds, at school related activities, (i.e. school excursions etc) and outside of school where there is a clear and close connection between the school and the conduct of students.

Our School's Approach.

Students are discouraged from bringing mobile communication devices to school.

Mobile communication devices are not used or required in any classroom for any learning activities. BYOD, (i.e. laptop computers) are used for these purposes.

If a student chooses to bring a mobile communication device to school, the student is responsible for ensuring the phone is switched off and stored in their school bag during all scheduled activities. This will include classes, incursions, assemblies, year meetings and study periods.

Students who bring mobile communication devices to school do so at their own risk. The school will not accept any responsibility for the loss or damage to mobile communication devices.

Harmful effects of inappropriate mobile communication device use include:

- Lack of student engagement in learning tasks
- Loss of learning opportunities
- Bullying, intimidating or otherwise harassing through SMS or text messaging or through photographic, video or other data transfer systems available on the phone
- Recording of conversations without the knowledge and permission of those involved in the conversation
- Downloading or accessing inappropriate material on the internet
- Filming of any physical interactions between students that occur during the school day or to and from school

Consequences for Inappropriate Use

Consequences may include, but are not limited to:

- Mobile communication device being confiscated. (the device is stored in the School Office and collected at the end of the day)
- Letter home to parents
- Phone call to parents
- Parents called to school for an interview with the student present
- Classroom isolation

NBSC Cromer Campus Mobile Policy 2021 (Continued)

- Application of the school's Welfare and Discipline Policy

For detailed information regarding the school's procedures on managing mobile communication devices see Appendix 1,2,3 (attached)

Contact between students and parents / carers during the school day.

Parents / carers:

Parents and carers are expected to only contact their children via the School Office.

Students:

If a student needs to make a phone call during the day, it must be during the scheduled breaks of recess or lunchtime.

Responsibilities and Obligations:

Students:

- Mobile communication devices are off and away all day
- Respect and follow the school procedures and the actions taken by staff
- Be responsible and respectful users of mobile communication devices and online services and support peers to be the same
- Communicate respectfully with peers, school staff and the school community.

Parents / Carers

- Support the implementation of the school's procedures, including its approach to resolving issues
- Recognize the role they play in educating their children and modelling the behaviours that underpin the responsible and respectful use of mobile communication devices.
- Take responsibility for their child's use of mobile communication devices and online services at home
- Monitor your child's mobile communication device use and online presence
- Switch off mobile communication devices when attending school functions or meetings.

Principal and Teachers

- Establish whole school expectation of mobile communication devices: off and away all day
- Educate students of inappropriate use of mobile communication devices
- Respond to and report any breaches and incidents of inappropriate mobile communication devices use. This includes:
 - reporting the creation, possession or distribution of indecent or offensive material to the Incident Support and Report hotline
 - working with the eSafety Commissioner to resolve cases of serious on line bullying or image based abuse
- support parents and carers to understand strategies that support responsible and respectful use of mobile communication devices

Non- Teaching Staff

- be aware of the school's procedures in relation to mobile communication devices
- report any inappropriate use of mobile communication devices to the principal, school Executive or school staff they are working with.

(Please see posters on following pages)



OFF & AWAY

ALL DAY

Turn your phone /
smart watch off
and put it and
your headphones
in your bag

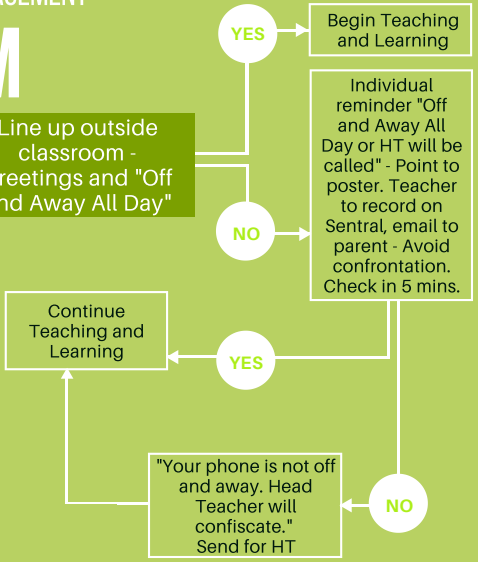


MOBILE PHONE CLASSROOM MANAGEMENT

CLASSROOM TEACHER



Line up outside classroom - Greetings and "Off and Away All Day"

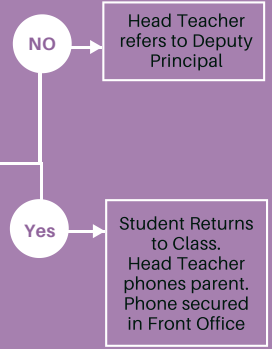


MOBILE PHONE CLASSROOM MANAGEMENT

HEAD TEACHER



Head Teacher attends classroom and removes student from class AND confiscates phone.

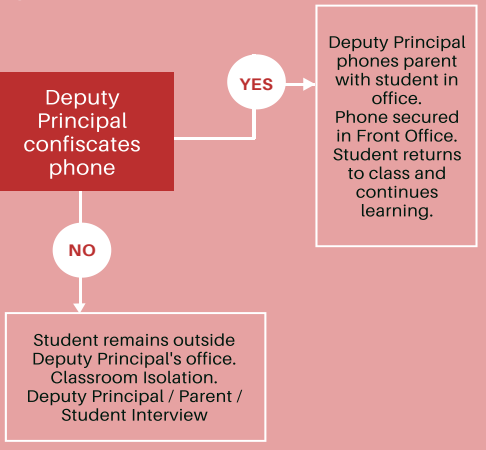


MOBILE PHONE CLASSROOM MANAGEMENT

DEPUTY PRINCIPAL



Deputy Principal confiscates phone





EDROLO AT CROMER CAMPUS

Edrolo is an excellent online study program and exam resource that is being utilised across a range of HSC and Preliminary subjects in 2019/2020.

Edrolo is a comprehensive, premium, online, interactive video and exam simulation resource for the HSC/Preliminary. Edrolo is currently used by over 300 schools and 50,000 students, and we are confident it is an extremely valuable investment, providing our students with a differentiated and targeted level of support as they prepare for their most important assessments and examinations.

What exactly is Edrolo?

Edrolo is an extensive study and exam revision resource crafted by master HSC teachers (including exam assessors, textbook authors, and department heads). Edrolo is built in accordance with the NESA Syllabus to guide students through their coursework during the year and final exam preparation.

Edrolo is broken up into two key elements:

- **Theory Master:** Interactive video courses mapped to each subject's syllabus and presented by proven expert teachers. Each subject's Theory Master has hundreds of videos and interactive quiz questions for students to learn from and test themselves on.
- **Exam Master:** Online practice exams offering video solutions for every single exam question, incorporating unique insights and diagnostic study tools enabling students to identify and target their individual areas of weakness.

Sitting behind Edrolo are rich analytics that our teachers will use to understand, in greater detail, the learning needs of students, and thereby be able to provide more targeted support than has ever been possible with traditional resources.

How will students use Edrolo?

Our teachers will guide students to make full use of Edrolo in a range of ways across the year, including:

- holiday homework;
- pre-class work;
- post-class consolidation;
- assessment preparation, and;
- exam revision.

How will students access Edrolo?

Edrolo is accessed simply by logging in to the Edrolo website: edrolo.com.au. Every student has been provided with a unique account that helps to track their progress throughout each subject. Students can access Edrolo anywhere there is an internet connection using their device of choice: laptop, PC, tablet or smartphone. There is no downloading of applications or software.

What can you do to support your HSC student?

We recommend you simply start by engaging in conversation about their Edrolo account if you notice they are struggling with their coursework, or don't know what to do next in their study program.

SEE THE PARENT INFORMATION VIDEO ON OUR SCHOOL WEBSITE AND PARENT PORTAL.

An important message about our response to COVID-19

The health and safety of our staff and students is of the utmost importance to our school.

We have implemented a range of measures to help keep our school healthy and reduce the spread of infection and illness. Some simple measures we ask that you adopt include:



Before entering our school

If you have been unwell, with symptoms such as a high temperature, cough, sore throat, and/or shortness of breath, please don't visit our school. Please contact our office to speak to one of our staff.



Increase hygiene practices

We request that all staff, students and visitors follow increased personal hygiene practices through regular and thorough hand washing and coughing or sneezing into your elbow or tissue, and disposing of tissues.

Ph:



Maintaining a healthy distance

For the health and wellbeing of our staff and students, please stand at least **1.5 metres** apart while waiting in our office. Our visitors are encouraged to wait outside for their turn to speak with our office staff. We are also applying social distancing requirements across all areas of the school as is reasonable and practical.



Support for our staff

We appreciate your patience and support while we work together to minimise the impact of COVID 19 in our community.

We know this is a difficult time and we are doing all we can to support our staff and students.

Search inside the Department for up-to-date information and resources.



Wellbeing and Safety of Cromer Campus Student Drivers and their Passengers

As is the case with many secondary schools, more and more of our senior students are driving to and from school. While most young drivers are careful, safety conscious and considerate when driving, they are one of the most vulnerable road user groups. Travelling with teenage passengers adds to the risk for these young drivers.

With this in mind, Cromer Campus has a responsibility to take all reasonable measures to ensure the wellbeing and safety of students. Our *Student Driving Policy* outlines what we expect from student drivers and their passengers. A copy of the policy is available on our school web site or can be obtained from the school office.

A *Parent Permission and Student Agreement Form* for both drivers and passengers can also be found on the school web site or obtained from the school office. All student drivers and parents/guardians are required to sign this form and return it to the school.

Please note: There is no parking available for students on school grounds.

Cromer Campus 2020 Policy for Students Driving Cars to School plus the permission and agreement forms are available on pages 18 & 19 of this Cromer Courier.



Compulsory School Attendance

Information for parents

Education for your child is important and regular attendance at school is essential for your child to achieve their educational best and increase their career and life options. NSW public schools work in partnership with parents to encourage and support regular attendance of children and young people. When your child attends school every day, learning becomes easier and your child will build and maintain friendships with other children.

What are my legal responsibilities?

Education in New South Wales is compulsory for all children between the ages of six years and below the minimum school leaving age. The *Education Act 1990* requires that parents ensure their children of compulsory school age are enrolled at, and regularly attend school, or, are registered with the Board of Studies, Teaching and Educational Standards for homeschooling.

Once enrolled, children are required to attend school each day it is open for students.

The importance of arriving on time

Arriving at school and class on time:

- Ensures that students do not miss out on important learning activities scheduled early in the day
- Helps students learn the importance of punctuality and routine
- Give students time to greet their friends before class
- Reduces classroom disruption

Lateness is recorded as a partial absence and must be explained by parents.

What if my child has to be away from school?

On occasion, your child may need to be absent from school. Justified reasons for student absences may include:

- being sick, or having an infectious disease
- having an unavoidable medical appointment
- being required to attend a recognised religious holiday
- exceptional or urgent family circumstance (e.g. attending a funeral)

Following an absence from school you must ensure that within 7 days you provide your child's school with a verbal or written explanation for the absence. However, if the school has not received an explanation from you within 2 days, the school may contact you to discuss the absence.

Principals may decline to accept an explanation that you have provided if they do not believe the absence is in the best interest of your child. In these circumstances your child's absence would be recorded as unjustified. When this happens the principal will discuss their decision with you and the reasons why.

Principals may request medical certificates or other documentation when frequent or long term absences are explained as being due to illness. Principals may also seek parental permission to speak with medical specialists to obtain information to collaboratively develop a health care plan to support your child. If the request is denied, the principal can record the absences as unjustified.

Travel

Families are encouraged to travel during school holidays. If travel during school term is necessary, discuss this with your child's school principal. An *Application for Extended Leave* may need to be completed. Absences relating to travel will be marked as leave on the roll and therefore contribute to your child's total absences for the year.

In some circumstances students may be eligible to enrol in distance education for travel periods over 50 school days. This should be discussed with your child's school principal.



My child won't go to school. What should I do?

You should contact the principal as soon as possible to discuss the issue and ask for help. Strategies to help improve attendance may include a referral to the school's learning and support team or linking your child with appropriate support networks. The principal may seek further support from the Home School Liaison Program to develop an Attendance Improvement Plan.

What might happen if my child continues to have unacceptable absences?

It is important to understand that the Department of Education and Communities may be required to take further action where children of compulsory school age have recurring numbers of unexplained or unjustified absences from school.

Some of the following actions may be undertaken:

- Compulsory Schooling Conferences

You may be asked, along with your child, to attend a Compulsory Schooling Conference. The conference will help to identify the supports your child may need to have in place so they attend school regularly. The school, parents and agencies will work together to develop an agreed plan (known as *Undertakings*) to support your child's attendance at school.

- Application to the Children's Court – Compulsory Schooling Order

If your child's attendance at school remains unsatisfactory the Department

may apply to the Children's Court for a *Compulsory Schooling Order*. The Children's Court magistrate may order a Compulsory Schooling Conference to be convened.

- Prosecution in the Local Court

School and Department staff remain committed to working in partnership with you to address the issues which are preventing your child's full participation at school. In circumstances where a breach of compulsory schooling orders occurs further action may be taken against a parent in the Local Court. The result of court action can be the imposition of a community service order or a fine.

What age can my child leave school?

All New South Wales students must complete Year 10 or its equivalent. After Year 10, and up until they reach 17 years of age, there are a range of flexible options for students to complete their schooling.

Working in Partnership

The Department of Education and Communities recognises that working collaboratively with students and their families is the best way to support the regular attendance of students at school.

We look forward to working in partnership with you to support your child to fulfil their life opportunities.

If a student misses as little as 8 days in a school term, by the end of primary school they'll have missed over a year of school.

Further information regarding school attendance can be obtained from the following websites:

Policy, information and brochures:

Please visit the Department of Education's *Policy library*

The *school leaving age*: Please visit the Department of Education's *Wellbeing and Learning website*

Do you need an interpreter?

Interpreting services are available on request, including for the hearing impaired. The Telephone Interpreter Service is available 24 hours a day, seven days a week on 131 450. You will not be charged for this service.

For further advice and questions contact your educational services team

T 131 536

Learning and Engagement

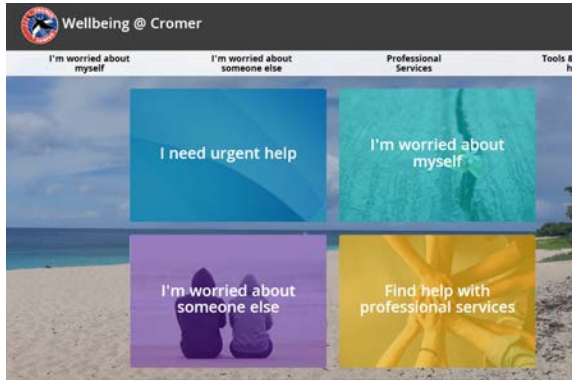
Student Engagement & Interagency Partnerships

T 9244 512

www.dec.nsw.gov.au

© February 2015

NSW Department of Education and Communities



The WELLBEING@ CROMER link is on the front page of the school website.

It contains information, resources and links to support the wellbeing of our students and families.



A further wellbeing initiative is the creation of a whole school Google classroom called:

Wellbeing at NBSC Cromer Campus

The code for this classroom is:

b2dgcwk

This classroom will be regularly updated with resources and is open to students and parents.



Cromer Campus Policy for Students Driving Cars to School

Any student who holds a valid NSW licence and intends to drive to school, either on a regular basis or occasionally, must comply with the school policy and is required to complete the Parent Permission and Student Agreement Form.

Cromer Campus Policy:

1. Students are required to adhere to all road rules and drive in a safe and responsible manner.
2. Student licence details and car make and registration must be recorded with the school.
3. Students are only to use their car for travelling to and from school.
4. Students are not permitted to go to their car during the school day.
5. Students are not to use their cars at lunchtime or in their study periods
6. Students are not permitted to carry other students as passengers to and from school or school events without the written permission of their parent/guardian and the passenger's parent/guardian. The Passenger Permission Form must be completed and submitted to the office.
7. Students are required to notify the school of any passenger who may be travelling with them to and from school as per the Passenger Permission Form.
8. Student drivers, a parent/guardian and, if relevant, the parent/guardian of any passenger, must sign the Parent permission and Student Agreement Form.
9. Cromer Campus does not have space available for student parking. Consequently no student is permitted to park their car within the school grounds.
10. The school's Welfare and Discipline Policy will apply where students fail to meet these obligations. Any unsafe driving behaviour or breaches of road rules will be reported to the police.



Cromer Campus Passenger Permission Form

This form must be completed by a parent/guardian of any student intending to travel to school as a passenger of a student of Cromer Campus who drives a car to and from school unless this student has permission on the original Parent Permission and Student Agreement Form.

I give approval for

Student Passenger's Name: _____

to travel with

Student Driver's Name: _____

We accept all conditions detailed in the Cromer Campus Policy for Students Driving Cars to School.

Parent/Guardian of Student Passenger

Name: _____

Parent/Guardian Signature: _____

Date: _____

Student Passenger

Name: _____

Student Signature: _____

Date: _____

School Approval:

Approved By: _____

Signature: _____

Date: _____

Cromer Campus Students Driving Cars to School Policy 2020



Cromer Campus Parent Permission and Student Agreement Form

***Note:** A photograph of the student's driver licence must be attached to this form.

This form must be completed by any student who intends to drive to school either occasionally or regularly.

Student Name: _____

Car Make/Model: _____

Colour and Registration Number: _____

Note: If the student intends to drive any car other than the one registered on this form, it must also be registered with the school.

Parent Permission

I give permission for _____

to drive to school and, if indicated on the reverse of this form, take the passengers indicated on this form. I am aware of the Cromer Campus Policy for Students Driving Cars to School. **I have seen the completed Cromer Campus Passenger Permission form for the student/s identified on this form.**

Name of Parent: _____ Date: _____

Signature of Parent/Guardian: _____ Date: _____

Student

I agree to adhere to all road rules and drive in a safe and responsible manner and follow the Cromer Campus Policy for Students Driving Cars to School.

Signature of Student:

_____ Date: _____

School Approval:

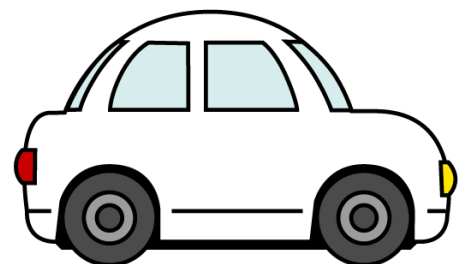
Approved By: _____

Signature: _____ Date: _____

Names of Students with completed Cromer Campus Passenger Permission forms approved to travel with

_____ Name of Driver.

- 1.
- 2.
- 3.
- 4.



To the School Principal / Headmaster

Conditions of use – Student Opal Card

I write to request your assistance in promoting the importance of using the Student Opal Card correctly.

It is a condition of use that students tap on at the start and tap off at the end of each trip with their Student Opal Card. This is important to ensure accurate patronage data is recorded. This data is used to plan school special and regular route bus services and assists State Transit in ensuring adequate capacity is provided, so students can travel to and from school safely.

Current statistics indicate that many students have failed to tap on or off the Opal readers when travelling. If students do not tap on and off the school bus service, it may appear under-utilised and may be considered for cancellation, based on low passenger numbers.

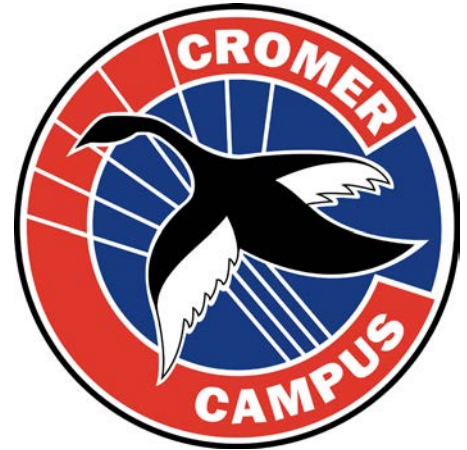
To assist with our future service planning can you please remind parents and students of this important condition of use so State Transit can continue to provide effective bus services in the future.

For more information and to apply for a School Opal card call 131500 or apply online at <https://www.opal.com.au/en/about-opal/opal-for-school-students>

Thank you for your assistance.

Yours sincerely

Patrick Wu
Customer Operations Manager
Brookvale Depot
State Transit Authority
Ph: 9941 5864
Mob: 0429994138
Patrick_wu@sta.nsw.gov.au



School travel update

Application information

Information for parents, guardians and students

Our school has partnered with Transport for NSW to use the new online School Portal for endorsing school travel applications.

You are now able to manage all your school travel needs online including applying for school travel passes and tracking the status of your application.

The application process has also been simplified so that a new or updated application for school travel passes is only needed when a student is:

- applying for a school travel pass for the first time
- requesting an additional pass as a result of a new shared parental responsibility situation (e.g. joint custody).
- changing school or campus
- changing home address
- receiving an expiry notification
- repeating a school year
- changing their name
- requesting a new transport operator.

This means students who are progressing to year 3 and year 7 only need to reapply if they are changing circumstances.

Students who are not residents and are temporarily in Australia can also provide their visa subclass number and exchange program (if prompted) when applying online, making the application and approval process much faster.

Parents, guardians and students can apply or update their details online at:

www.transportnsw.info/school-students

If you do not have access to the internet contact 131 500 for assistance.