



Cromer Courier

CROMER CAMPUS NEWSLETTER

Respect • Responsibility • Success



/cromercampus



#cromercampus



@cromercampus

<http://www.nbsscromer-h.schools.nsw.edu.au>

nbsccromer-h.school@det.nsw.edu.au

Telephone: 9981 1155

120 South Creek Road CROMER NSW 2099

Term 1 2021

Years 7, 11 12 and Peer Support return Friday 29th January

Years 8, 9 10 return Monday 1st February



Cromer Campus Most Outstanding Students 2020

FROM THE PRINCIPAL

Annual Presentation Assembly and 2020 Summary

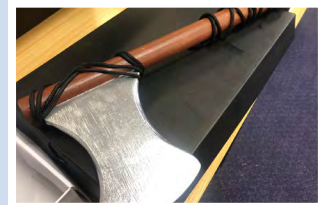


By **JUSTIN HONG**
Principal
NBSC Cromer
Campus

I sincerely want to thank the community for their support in 2020 and also express how disappointed I was that we could not come together at the end of the year in our usual way to celebrate student achievement. It is my hope that we never experience families missing out on assemblies, school events, award assemblies and graduation ceremonies and that there is a complete return to all school events in 2021. I value working in partnership with all members of the school community and unfortunately we have been hindered in our ability to do that this year. Like most of you I am really looking forward to 2021 and a better year. It has not all been doom and gloom and I would like to share with you the following excerpt from my speech at this year's presentation day assembly.

IN THIS ISSUE

Viking Museum (P4)



IS Work Experience (P10)



SRC 2020 Report (P12)



Duke of Edinburgh Info Night (P3)

HSIE Year 7 Displays (P6)

Yr 9 Public Awareness Campaign (P8)

Coolmaths@cromercampus (P9)

CAPA - Yr 9 Organic Sculptures (P14)

Year 7 Weapons Show (P16)

Mobile Phone Policy (P18-21)

Cromer Campus P&C Teamapp (P22)

Air Force Cadets (P23)

NBSC Snowsports (P23)

Principal's report continued...

Welcome to our annual school presentation day. This is normally an evening event, but this year due to COVID it is happening during the day and we are livestreaming the event to our community. I am so sorry that we cannot all be together to celebrate our students' many achievements but I am very confident that in 2021 we will be able to come together again, with all of us in the same room. So today I welcome all students, parents and guests whether you are here with us or out there on the end of our livestream.

Of course this year with COVID has been a year where normality has been thrown out the window.

Socrates, a classical Greek philosopher once said, "the secret of change is to focus all of your energy, not on fighting the old, but on building the new." We have discovered many new things in 2020 and a lot of these have been positive. We all have a new understanding of the importance of hand washing, a positive result of that is the huge reduction in the common cold this year. We have become much better at on-line learning. In isolation we had to. But we are not in isolation now and because of what we have experienced this year you now all have google classrooms for your subjects and a stronger capacity to extend your learning outside the classroom. As a result you are now better able to prepare assignments, better able to complete homework and better able to prepare for tests. Or let me put it another way, you are now better equipped to be successful. I know there is an increased appreciation of school and that came after lockdown, especially from your parents. When it was taken away from us, we missed you, you missed your friends, you missed the normal contact you had with people and the freedoms just to move around. We now largely have that back and what we have gained is the chance to appreciate what we have. A hard lesson for us all to learn and remember is that life is sometimes not easy, but it is the hard times that make us stronger and more resilient. Because of COVID we have all had to become stronger. For all the families and parents out there watching us through the livestream, if it has been hard for you, hang in there, better times are ahead.

Like everybody I am really looking forward to 2021. Next year we continue our focus on literacy and writing. Mobile phones are getting in the way of our learning and we will be changing the whole schools approach to that. Watch this space for new and improved procedures. As the school continues to grow I am expecting more building projects to upgrade our facilities. There will be a hopeful return to activities that were cancelled this year such as our offsite camps, excursions, creative and performing arts opportunities and interschool sporting competitions.

I finished the speech by congratulating all of our students. I thanked our amazing teachers and staff and wished everybody a safe, restful and enjoyable festive season.

I am looking forward to 2021 and much better times ahead. Thank you for all of your support throughout one of the most difficult times in our history. I remain your incredibly proud and thankful Principal. It is an honour and a privilege to serve this incredible school community.

Merry Christmas,
Justin Hong

Mobile Phones



A significant amount of consultation has occurred around student misuse of mobile communication devices such as mobile phones, smart watches, headphones etc. This has included discussions with our students, staff and parent community. Surveys and data have also been collected and analysed. As a result the school will be implementing a new mobile communication devices policy with improved procedures designed to support students and staff, increase student engagement and minimise the negative and significant issues associated with the misuse of mobile communication devices to your children. Please see pages 18 - 21 for the new policy, which has also been published on the school's website. I am requesting your support in the implementation of this policy and would specifically ask you for the following.


- **Discuss mobile phone misuse with your child, the harmful effects of this, your support of your child's educational opportunities, and your support of the school's position and procedures on mobile communication devices.**
- **Consider if your child needs to have a mobile communication device at school and support your child leaving it at home.**

- If you urgently need to contact your child during the school day, please call the school office on 9981 1155, not your child's mobile phone. This will avoid any negative consequences as students are not permitted to have mobile communication devices out for any reason during scheduled learning activities.

Research around mobile phone misuse in our young people is overwhelming. Misuse of these devices negatively impacts student engagement and their wellbeing. The significant change in our new procedure from 2021, is we will be confiscating mobile phones from students who do not follow the school policy and who misuse their device. The device will be returned at the end of the school day. Our motto at NBSC Cromer Campus is "OFF AND AWAY ALL DAY". This means they are turned off and kept in students' bags (not their pockets) while scheduled activities are occurring. We will inform you if your child is misusing their phone either through email or a phone call or both. In the unlikely case of persistent misuse we may ask you to attend the school to assist us in a meeting with your child, reinforcing expectations and planning to ensure future misuse does not occur.

Justin Hong
Principal



DUKE OF ED BRONZE INFO NIGHT 2021

Offered to Year 9 students across the College in 2021

6.00pm

Wednesday February 10th


NBSC Freshwater Senior Campus Gymnasium

SILVER & GOLD INFO NIGHT

5.30pm Thursday Feb 11

NBSC Freshwater Senior Campus Theatre

More Information? Chat with the College Duke of Edinburgh Award Coordinator,
Ms. Vicki Busse vicki.busse@det.nsw.edu.au 02 9939 6942
www.nbsc.schools.nsw.gov.au/college-opportunities



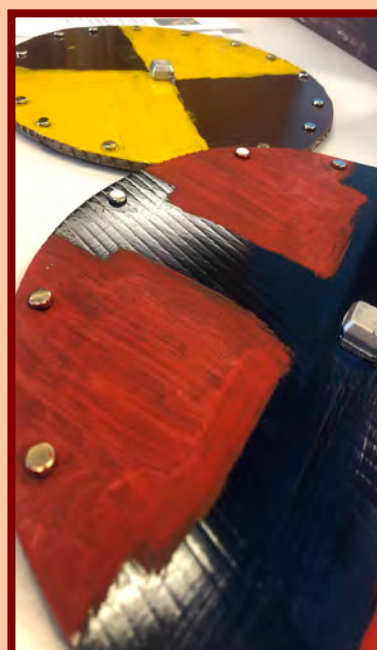
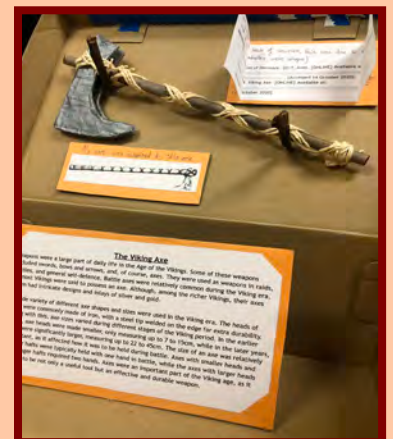
SCAN ME

HSIE FACULTY

Vikings Museum - Year 8 Displays

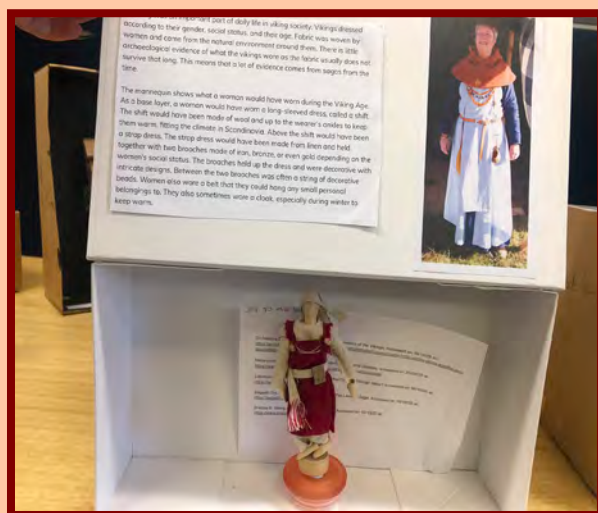
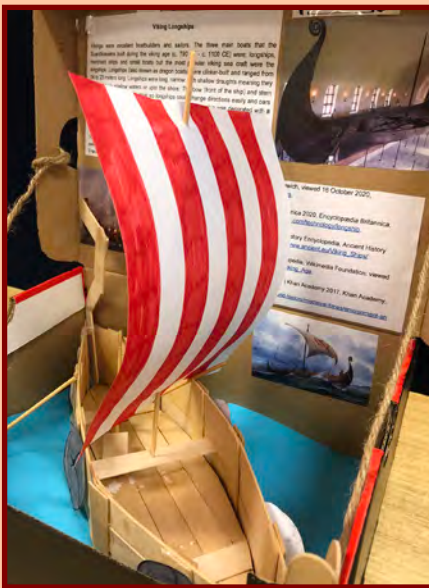
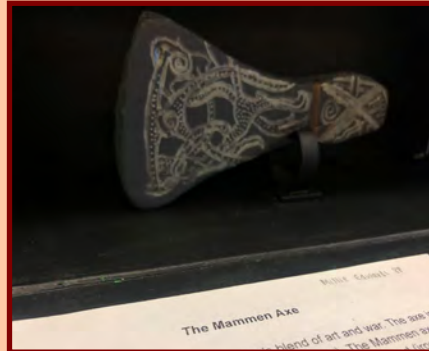
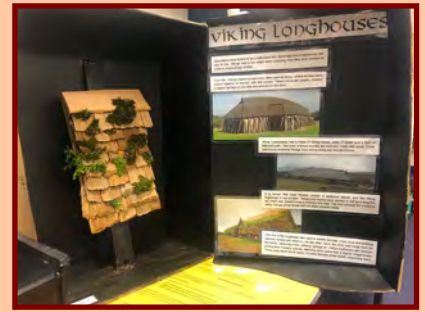
We may not live in the Viking Age any more, but that does not mean we cannot see artefacts from it!

This term, Year 8 History students completed their final assessment task - the creation and display of an artefact from the Viking era. The task required thorough research into the daily life of the Vikings – for example the food, clothing, religion, housing, tools and weapons. Traditionally, these works would be displayed as part of an exhibition of works, but unfortunately this could not take place this year due to COVID-19 restrictions. Take a look at some of the fantastic works they created.



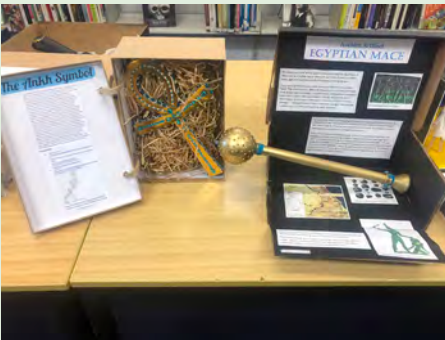
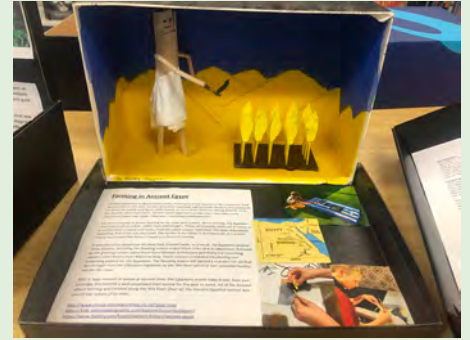
HSIE FACULTY

Vikings Museum - Year 8 Displays



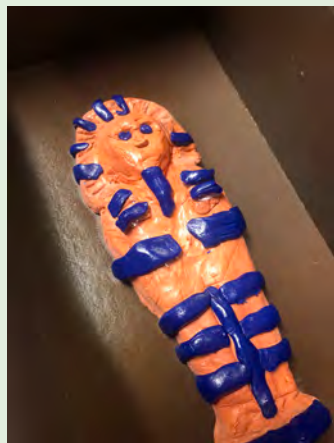
HSIE FACULTY

Year 7 Displays



HSIE FACULTY

Year 7 Displays



ENGLISH FACULTY

Year 9 Public Awareness Campaigns

For our Term 4 assessment task, we were asked to present an awareness campaign of our choice, in topics ranging from racism to animal rights. Overall, the process of creating our presentation took many weeks, with the inclusion of several other tasks such as the feature article and research log. Personally, I enjoyed the assignment as it allowed me to become a little bit creative in my assessment and to influence the presentation in a way that I feel comfortable with. On the day that we presented our awareness campaign to the teachers and other students, I felt that we had impacted them greatly with our presentation, using persuasive elements such as a VR headset and petition. Overall, this was a good, engaging assignment to do.

- Jacky Li



During the term, Year 9 worked on public awareness campaigns, in order to understand how collaborative work, time management and effort are valued in the modern workplace. Many groups in our year spent their time researching specific issues that they were passionate about in order to present to both Year 8, their peers and their teachers. This gave us a clear understanding and perspective of what it is like to work collaboratively and present ideas to an audience. This has been an exhaustive and exciting ride, culminating in the end of the project. The issues encountered during the project included team conflict, time management skills and splitting of the workload. All of these issues helped us gain an understanding of what it is like in the modern workplace and subsequently helped us gain awareness of solutions to these issues. After this project we have now taken a step closer to preparation of collaborative work in the future.

- Orlando & Bia

The experience of the day was very pleasant and created a unique memory that will stay with me for a while. The day created many memories with teachers, students and any other people who came to the presentations. I personally believe that our group created a good relationship for the viewers guiding them through Racism and how it is a problem in our society.

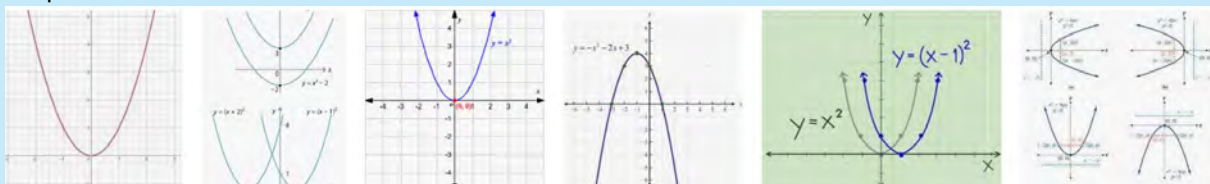
- Ajay Puafisi



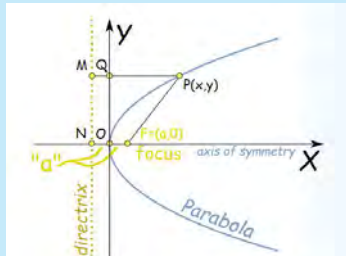
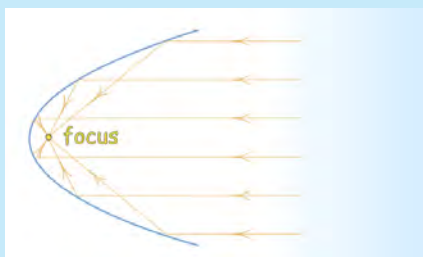
Coolmaths@cromercampus *Using Mathematics to cook your lunch!*



Over recent weeks, our Year 10 students have been continuing their exploration of the beautiful, intriguing shape known as the Parabola!



And a parabola has this amazing property: Any ray parallel to the axis of symmetry gets reflected off the surface straight to the focus. Using the marvels of Year 10 Mathematics, we can calculate the distance to the focus using the quadratic formula $y^2 = 4ax$, where a is the distance from the origin to the focus.



Because of this property, a parabolic reflector can focus the sun's rays, and generate enough heat to cook a sausage! Just over 12 months ago, our skies were thick with bushfire smoke. However, last week our Year 10 students finally did get their day in the sun – and very much enjoyed the results!



INTEGRATED STUDIES FACULTY

2020 Work Experience

Integrated Studies senior students are finishing the school year having completed a number of work experience placements around the Northern Beaches. Despite some disruption during Terms 1 and 2, the final two terms saw many students returning to their work experience. We are very grateful for the support of the following businesses:



Polished Pet
Dee Why

Groomingdales Pet
Fairlight

New Leaf Nursery

Warringah Council Carpark

Barrenjoey Smash Repairs

Warriewood Childcare

Packforce

Jigsaw

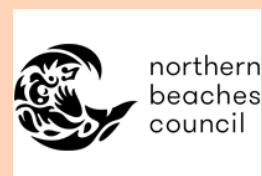
Dee Why Auto Care

Pupstars Grooming
Allambie Heights

The Owl and the Pussycat
Childcare
Brookvale

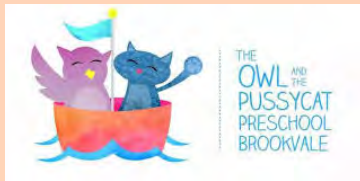
Blondes & Brunettes
Warringah Mall

Norther Beaches Catering



INTEGRATED STUDIES FACULTY

Work Experience 2020



2020 SRC Report



SRC

STUDENT REPRESENTATIVE COUNCIL



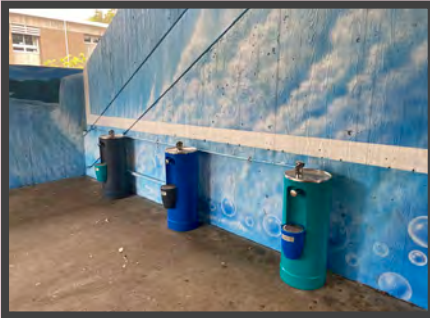
We're on Instagram!

Follow us at

@cromercampus_src

For updates on what we're working on, important information about upcoming events, and content direct from our student leaders!

This year has been a challenge for all students, defined by the abrupt disruptions to learning and the need for flexibility and resilience. Through this, our leaders adapted how they supported the students they represent: liaising with teachers and executive staff about their experiences with online learning, creating content to reach out and support their peers, and remaining positive despite the challenges they faced.



Some projects that our students have been working towards still came to fruition this year, including the installation of the recycling bins and new bubblers around the school as part of our Environmental Portfolio, all thanks to the support and dedication of our school's P&C, and their commitment to supporting student voice.

Another initiative that our students were able to complete this year was a proposal for the acquisition of additional flag poles so that we are able to always fly the Indigenous and Torres Strait Islander flags. Since presenting this proposal to Executive staff, the new flag poles have been installed in the Year 7 area, and plans are being made for a formal raising ceremony early next year.



We were fortunate enough to be able to hold some event days in the second half of the year, including WearItPurple and R U OK? Day, promoting LGBTQI+ and mental health awareness, and Diversity Day, where we celebrated the diversity at Cromer Campus with activities, performances and speeches during lunch.



2020 SRC Report



We also held lunchtime activities as part of Cromer's celebrations for NAIDOC Week, where SRC students taught Indigenous games to other students, and hosted a pledge table. It has been great to see so many students across the school getting involved!



During early Term 4, Cromer hosted the NBSC Leadership Conference, in which the Leadership Teams from across all campuses, and special guest, Zali Steggall MP, completed a range of networking and leadership sessions in our HUB. It was a great day, and an honour to be able to host! Off the back of this event, Alessandro and Zoe attended Zali Steggall's Youth Ambassador Program, where there got the opportunity to network further with leaders from all over the Northern Beaches, discussing the issues they care about most.



Our annual SRC 'Camp' this year looked a little different due to COVID as well. With all the uncertainty around restrictions, Ms Dolle and Ms Bayly made the decision early to host the camp at school in the HUB, running a range of leadership sessions and activities over the two days. Some of the highlights included seeing Mr Hong juggle, having time to sit down to plan our initiatives for 2021, and of course, the school-wide scavenger hunt (a massive thanks to all the teachers that helped make it run so smoothly)! It was a fantastic 'camp', and it was so great to see all our student leaders working together for the benefit of our school community.



And finally, this year we also established our SRC Instagram page as a way to stay connected to students during COVID and promote events around the school. If you would like to stay up to date with everything that is happening, check out our page at [@cromercampus_src](https://www.instagram.com/cromercampus_src/)!

Ms Dolle SRC Coordinator
Ms Bayly Assistant SRC Coordinator



CAPA FACULTY

Organic Sculptures - Year 9

Year 9 Visual Arts responded to the natural world through the creation of suggestive, ceramic organic sculptures. Using a range of ceramic hand building techniques to create their artworks Year 9 students designed, developed and created an interesting and visually enticing body of work inspired by the weird, lumpy and bumpy natural world.



CAPA FACULTY

Organic Sculptures - Year 9



HSIE FACULTY

Year 7 Weapons Show

Each year at Cromer Campus we have an extraordinary incursion for Year 7 history students – the weapons show. This year, students were able to not only see but try on and test out weapons from Ancient Greece, Rome and Egypt, as well as Medieval Europe and Japan – all tying into our main topics for History in Years 7 and 8. All students who attended had a fantastic time, asked excellent questions, and learned a lot. Check out some of the awesome photos of our Year 7s with their armor and weapons!



HSIE FACULTY

Year 7 Weapons Show



NBSC Cromer Campus Mobile Policy 2021



NBSC CROMER CAMPUS

Use of Mobile Communication Devices and Online Services Procedure (*Mobile Communication Devices include mobile phones, smart watches etc*)

Purpose

This procedure guides student use of mobile communication devices and online services at school.

Our school acknowledges that students may want to bring a mobile communication device to school for a variety of reasons.

Our school also recognizes the harm that maybe caused if used inappropriately and that we need to support our students to use mobile communication devices in safe, responsible and respectful ways.

Scope

This procedure provides a consistent framework for the use of Mobile Communication Devices in our school. It sets out shared responsibilities of school staff, students and parents /carers. It also provides a framework to manage potential misuse of mobile communication devices.

This procedure covers student use of Mobile Communication Devices and online services in school related settings, including on school grounds, at school related activities, (i.e. school excursions etc) and outside of school where there is a clear and close connection between the school and the conduct of students.

Our School's Approach.

Students are discouraged from bringing mobile communication devices to school.

Mobile communication devices are not used or required in any classroom for any learning activities. BYOD, (i.e. laptop computers) are used for these purposes.

If a student chooses to bring a mobile communication device to school, the student is responsible for ensuring the phone is switched off and stored in their school bag during all scheduled activities. This will include classes, incursions, assemblies, year meetings and study periods.

Students who bring mobile communication devices to school do so at their own risk. The school will not accept any responsibility for the loss or damage to mobile communication devices.

Harmful effects of inappropriate mobile communication device use include:

- Lack of student engagement in learning tasks
- Loss of learning opportunities
- Bullying, intimidating or otherwise harassing through SMS or text messaging or through photographic, video or other data transfer systems available on the phone
- Recording of conversations without the knowledge and permission of those involved in the conversation
- Downloading or accessing inappropriate material on the internet
- Filming of any physical interactions between students that occur during the school day or to and from school

Consequences for Inappropriate Use

Consequences may include, but are not limited to:

- Mobile communication device being confiscated. (the device is stored in the School Office and collected at the end of the day)
- Letter home to parents
- Phone call to parents
- Parents called to school for an interview with the student present
- Classroom isolation

NBSC Cromer Campus Mobile Policy 2021 (Continued)

- Application of the school's Welfare and Discipline Policy

For detailed information regarding the school's procedures on managing mobile communication devices see Appendix 1,2,3 (attached)

Contact between students and parents / carers during the school day.

Parents / carers:

Parents and carers are expected to only contact their children via the School Office.

Students:

If a student needs to make a phone call during the day, it must be during the scheduled breaks of recess or lunchtime.

Responsibilities and Obligations:

Students:

- Mobile communication devices are off and away all day
- Respect and follow the school procedures and the actions taken by staff
- Be responsible and respectful users of mobile communication devices and online services and support peers to be the same
- Communicate respectfully with peers, school staff and the school community.

Parents / Carers

- Support the implementation of the school's procedures, including its approach to resolving issues
- Recognize the role they play in educating their children and modelling the behaviours that underpin the responsible and respectful use of mobile communication devices.
- Take responsibility for their child's use of mobile communication devices and online services at home
- Monitor your child's mobile communication device use and online presence
- Switch off mobile communication devices when attending school functions or meetings.

Principal and Teachers

- Establish whole school expectation of mobile communication devices: off and away all day
- Educate students of inappropriate use of mobile communication devices
- Respond to and report any breaches and incidents of inappropriate mobile communication devices use. This includes:
 - reporting the creation, possession or distribution of indecent or offensive material to the Incident Support and Report hotline
 - working with the eSafety Commissioner to resolve cases of serious on line bullying or image based abuse
- support parents and carers to understand strategies that support responsible and respectful use of mobile communication devices

Non- Teaching Staff

- be aware of the school's procedures in relation to mobile communication devices
- report any inappropriate use of mobile communication devices to the principal, school Executive or school staff they are working with.

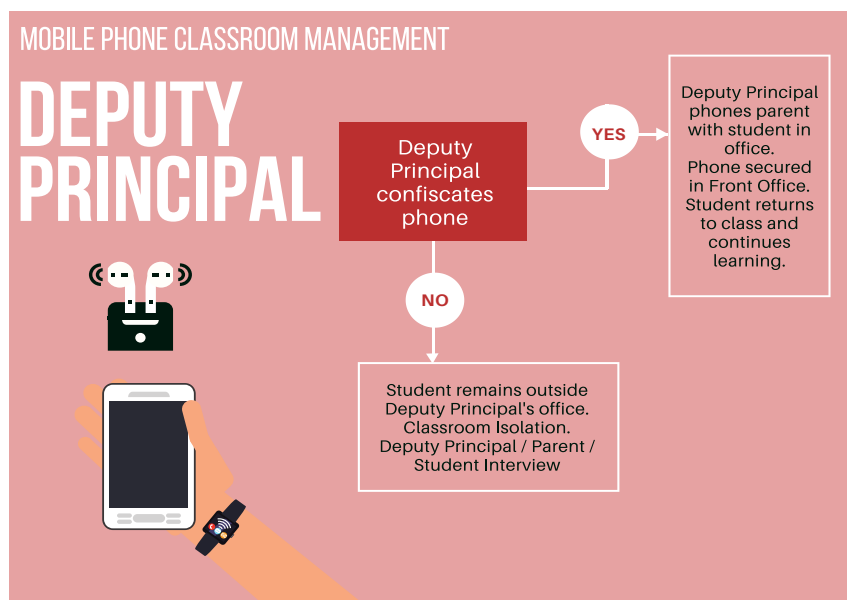
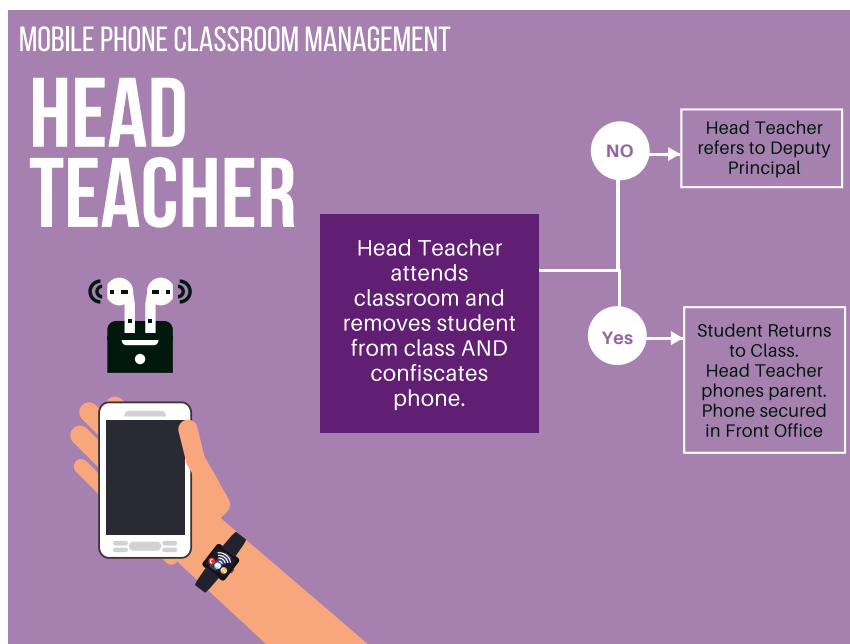
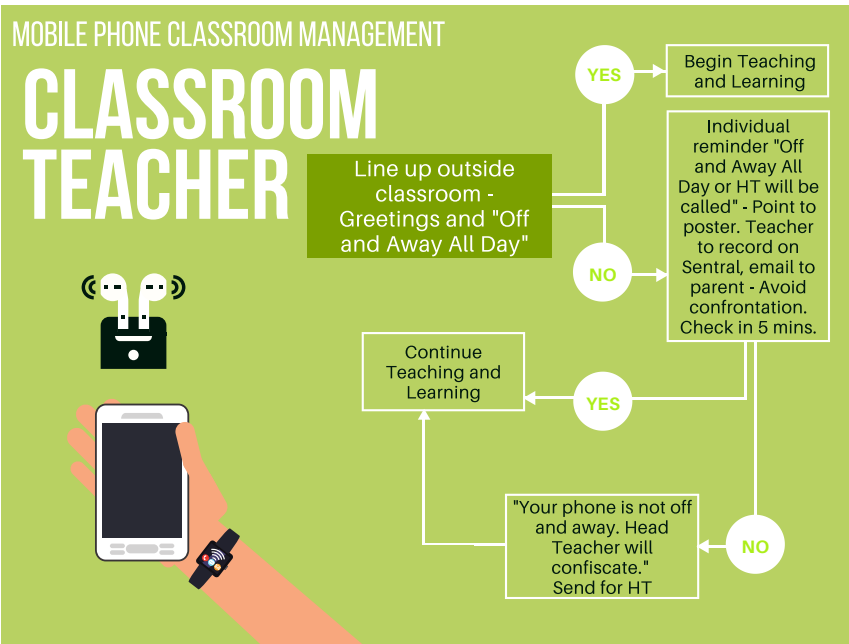
(Please see posters on following pages)



OFF & AWAY ALL DAY

Turn your phone /
smart watch off
and put it and
your headphones
in your bag



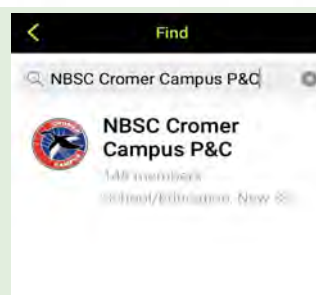
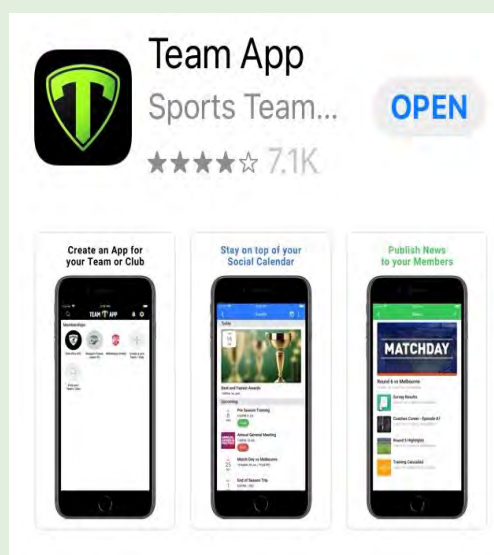


Cromer Campus P&C Association

Parents and Carers please join our **TEAMAPP** to ensure you are across all news and events and have quick links to resources such as uniform shop, parent portal, newsletters and Flexischools.

On your iPhone do the following:

1. Go to the APP STORE
2. Download TEAMAPP
3. **SIGN UP**
4. **FIND YOUR TEAM** - NBSC Cromer Campus P&C
5. Join, and choose the YEAR groups that child/ren belong to, plus any other groups of interest



Shop Hours:
Tuesday: 8:00am – 12:00pm
Thursday: 12:00pm – 4:00pm

NBSC Cromer Campus Uniform Shop

		<u>QTY</u>	<u>Size</u>
Girls			
Junior Girls White Blouse/navy Piping	32.00		
Senior Girls Sky Blouse	30.00		
Junior Girls Tartan Skirt	50.00		
Senior Girls Navy Skirt	50.00		
Stretch Navy Slacks	39.00		
Boys			
Senior Boys Shirt	32.00		
Junior/Senior Grey Elastic Waist Shorts	30.00		
Junior/Senior Grey Elastic Waist Pants	35.00		
Junior Boys White Polo	28.00		
Senior Sky Polo	28.00		
Unisex			
School Jacket (limited stock – discontinued item)	60.00		
Softshell Jacket	72.00		
V -Neck Sloppy Joe	38.00		
Jumpers			
Wool Jumper	70.00		
Sports			
Sport Shorts	30.00		
Trackpants	45.00		
Sports Polo	35.00		
Others			
White Socks Regular x 5	20.00		
School Tie	20.00		
Black Winter Stockings	10.00		
Dark Navy Winter Stockings	10.00		
New School Cap	12.00		

Coivd-19 Uniform Shop Operation.

Daylight Uniform Shop will operate under normal shop hours.

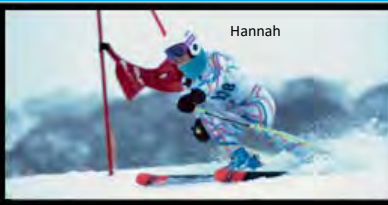
Cromer Campus is promoting Online orders and student purchases only. Online Ordering is via

<http://daylightsportswear.com/cromer/>

Please have your student bring a copy of the Online Order to the uniform shop for collection
Or

Have the student bring your order form to the Uniform shop to be processed and collected.

NBSC SNOWSPORTS



While we enter the start of summer, it is also time to start thinking about next year's ski season and the **2021 Subaru Sydney Interschools Snowsports Championships**. The event is scheduled for Thredbo and NBSC Snowsports is looking for new members.

Racers participate in Ski Slalom, SkierX and Moguls, Snowboard Slalom, Snowboard BoarderX and Slopestyle Ski and Board events, both as individuals, or as a member of age group divisional teams. After Covid19 disrupted the 2020 season NBSC Snowsports' racers will be looking ahead and be ready to welcome the next group of Year 7 and/or older students interested in 'having fun and having a go' into the team.

All five NBSC campuses are expected to be represented by a keen group of skiers and boarders ready to test themselves against conditions, the course and the race timeclock.

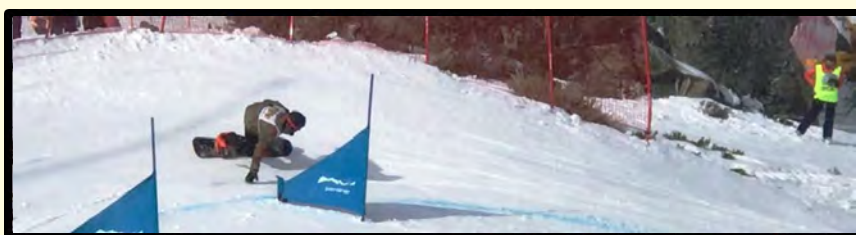
Successful qualifiers from the Thredbo event can progress through to the **Subaru NSW/ACT/QLD State Interschools Snowsports Championships**, at Perisher in late August, and the **Australian Interschools Championships** at Mt Buller, early September.

Families wishing to be involved can join the mailing list or direct any event inquiries to either mark@markpurkiss.com or through the college via **Kristie Crawford** kristie.crawford@det.nsw.gov.au (NBSC Sports Coordinator).

The Ski Australia NSW - Interschools Snowsports website <http://nswinterschools.com.au> is where you can register for email updates and event information. Also make sure you like and sign-up to the **NBSC Snowsports** Facebook page at <https://www.facebook.com/groups/1554955111467801/>

If you enjoy skiing or boarding and would like to be involved in some fun racing, join our **NBSC Snowsports** team and start planning to head down to Thredbo next July. You're bound to make new friends and have plenty of fun.

Mark Purkiss
NBSC Snowsports, 0439 439 731



AIR FORCE CADETS

305 (CITY OF PITTSWATER) SQUADRON

DO YOU WANT TO

- ✈ Learn about aviation
- ✈ Experience military training
- ✈ Develop leadership skills
- ✈ Make life-long friends

ARE YOU

- ✈ In high school this year
- ✈ An Australian resident
- ✈ Not an Army or Navy Cadet
- ✈ Looking for new challenges

READY TO BEGIN YOUR NEXT ADVENTURE?

- ✈ Visit 305squadron.org/recruiting and register your interest
- ✈ Attend our registration night, **6pm Thursday, 28 January 2021** at the Dee Why Multi-User Depot, 40 South Creek Road Dee Why

www.305squadron.org

TOMORROW'S LEADERS TODAY



EDROLO AT CROMER CAMPUS

Edrolo is an excellent online study program and exam resource that is being utilised across a range of HSC and Preliminary subjects in 2019/2020.

Edrolo is a comprehensive, premium, online, interactive video and exam simulation resource for the HSC/Preliminary. Edrolo is currently used by over 300 schools and 50,000 students, and we are confident it is an extremely valuable investment, providing our students with a differentiated and targeted level of support as they prepare for their most important assessments and examinations.

What exactly is Edrolo?

Edrolo is an extensive study and exam revision resource crafted by master HSC teachers (including exam assessors, textbook authors, and department heads). Edrolo is built in accordance with the NESA Syllabus to guide students through their coursework during the year and final exam preparation.

Edrolo is broken up into two key elements:

- **Theory Master:** Interactive video courses mapped to each subject's syllabus and presented by proven expert teachers. Each subject's Theory Master has hundreds of videos and interactive quiz questions for students to learn from and test themselves on.
- **Exam Master:** Online practice exams offering video solutions for every single exam question incorporating unique insights and diagnostic study tools enabling students to identify and target their individual areas of weakness.

Sitting behind Edrolo are rich analytics that our teachers will use to understand, in greater detail, the learning needs of students, and thereby be able to provide more targeted support than has ever been possible with traditional resources.

How will students use Edrolo?

Our teachers will guide students to make full use of Edrolo in a range of ways across the year, including:

- holiday homework;
- pre-class work;
- post-class consolidation;
- assessment preparation, and;
- exam revision.

How will students access Edrolo?

Edrolo is accessed simply by logging in to the Edrolo website: edrolo.com.au. Every student has been provided with a unique account that helps to track their progress throughout each subject. Students can access Edrolo anywhere there is an internet connection using their device of choice: laptop, PC, tablet or smartphone. There is no downloading of applications or software.

What can you do to support your HSC student?

We recommend you simply start by engaging in conversation about their Edrolo account if you notice they are struggling with their coursework, or don't know what to do next in their study program.

SEE THE PARENT INFORMATION VIDEO ON OUR SCHOOL WEBSITE AND PARENT PORTAL.

An important message about our response to COVID-19

The health and safety of our staff and students is of the utmost importance to our school.

We have implemented a range of measures to help keep our school healthy and reduce the spread of infection and illness. Some simple measures we ask that you adopt include:



Before entering our school

If you have been unwell, with symptoms such as a high temperature, cough, sore throat, and/or shortness of breath, please don't visit our school. Please contact our office to speak to one of our staff.

Ph:



Increase hygiene practices

We request that all staff, students and visitors follow increased personal hygiene practices through regular and thorough hand washing and coughing or sneezing into your elbow or tissue, and disposing of tissues.



Maintaining a healthy distance

For the health and wellbeing of our staff and students, please stand at least **1.5 metres** apart while waiting in our office. Our visitors are encouraged to wait outside for their turn to speak with our office staff. We are also applying social distancing requirements across all areas of the school as is reasonable and practical.



Support for our staff

We appreciate your patience and support while we work together to minimise the impact of COVID 19 in our community.

We know this is a difficult time and we are doing all we can to support our staff and students.

Search inside the Department for up-to-date information and resources.

education.nsw.gov.au



Wellbeing and Safety of Cromer Campus Student Drivers and their Passengers



As is the case with many secondary schools, more and more of our senior students are driving to and from school. While most young drivers are careful, safety conscious and considerate when driving, they are one of the most vulnerable road user groups. Travelling with teenage passengers adds to the risk for these young drivers.

With this in mind, Cromer Campus has a responsibility to take all reasonable measures to ensure the wellbeing and safety of students. Our *Student Driving Policy* outlines what we expect from student drivers and their passengers. A copy of the policy is available on our school web site or can be obtained from the school office.

A *Parent Permission and Student Agreement Form* for both drivers and passengers can also be found on the school web site or obtained from the school office. All student drivers and parents/guardians are required to sign this form and return it to the school.

Please note: There is no parking available for students on school grounds.

Cromer Campus 2020 Policy for Students Driving Cars to School plus the permission and agreement forms are available on pages 18 & 19 of this Cromer Courier.



Compulsory School Attendance

Information for parents

Education for your child is important and regular attendance at school is essential for your child to achieve their educational best and increase their career and life options. NSW public schools work in partnership with parents to encourage and support regular attendance of children and young people. When your child attends school every day, learning becomes easier and your child will build and maintain friendships with other children.

What are my legal responsibilities?

Education in New South Wales is compulsory for all children between the ages of six years and below the minimum school leaving age. The *Education Act 1990* requires that parents ensure their children of compulsory school age are enrolled at, and regularly attend school, or, are registered with the Board of Studies, Teaching and Educational Standards for homeschooling.

Once enrolled, children are required to attend school each day it is open for students.

The importance of arriving on time

Arriving at school and class on time:

- Ensures that students do not miss out on important learning activities scheduled early in the day
- Helps students learn the importance of punctuality and routine
- Give students time to greet their friends before class
- Reduces classroom disruption

Lateness is recorded as a partial absence and must be explained by parents.

What if my child has to be away from school?

On occasion, your child may need to be absent from school. Justified reasons for student absences may include:

- being sick, or having an infectious disease
- having an unavoidable medical appointment
- being required to attend a recognised religious holiday
- exceptional or urgent family circumstance (e.g. attending a funeral)

Following an absence from school you must ensure that within 7 days you provide your child's school with a verbal or written explanation for the absence. However, if the school has not received an explanation from you within 2 days, the school may contact you to discuss the absence.

Principals may decline to accept an explanation that you have provided if they do not believe the absence is in the best interest of your child. In these circumstances your child's absence would be recorded as unjustified. When this happens the principal will discuss their decision with you and the reasons why.

Principals may request medical certificates or other documentation when frequent or long term absences are explained as being due to illness. Principals may also seek parental permission to speak with medical specialists to obtain information to collaboratively develop a health care plan to support your child. If the request is denied, the principal can record the absences as unjustified.

Travel

Families are encouraged to travel during school holidays. If travel during school term is necessary, discuss this with your child's school principal. An *Application for Extended Leave* may need to be completed. Absences relating to travel will be marked as leave on the roll and therefore contribute to your child's total absences for the year.

In some circumstances students may be eligible to enrol in distance education for travel periods over 50 school days. This should be discussed with your child's school principal.



My child won't go to school. What should I do?

You should contact the principal as soon as possible to discuss the issue and ask for help. Strategies to help improve attendance may include a referral to the school's learning and support team or linking your child with appropriate support networks. The principal may seek further support from the Home School Liaison Program to develop an Attendance Improvement Plan.

What might happen if my child continues to have unacceptable absences?

It is important to understand that the Department of Education and Communities may be required to take further action where children of compulsory school age have recurring numbers of unexplained or unjustified absences from school.

Some of the following actions may be undertaken:

- Compulsory Schooling Conferences

You may be asked, along with your child, to attend a Compulsory Schooling Conference. The conference will help to identify the supports your child may need to have in place so they attend school regularly. The school, parents and agencies will work together to develop an agreed plan (known as Undertakings) to support your child's attendance at school.

- Application to the Children's Court – Compulsory Schooling Order

If your child's attendance at school remains unsatisfactory the Department

may apply to the Children's Court for a *Compulsory Schooling Order*. The Children's Court magistrate may order a Compulsory Schooling Conference to be convened.

- Prosecution in the Local Court

School and Department staff remain committed to working in partnership with you to address the issues which are preventing your child's full participation at school. In circumstances where a breach of compulsory schooling orders occurs further action may be taken against a parent in the Local Court. The result of court action can be the imposition of a community service order or a fine.

What age can my child leave school?

All New South Wales students must complete Year 10 or its equivalent. After Year 10, and up until they reach 17 years of age, there are a range of flexible options for students to complete their schooling.

Working in Partnership

The Department of Education and Communities recognises that working collaboratively with students and their families is the best way to support the regular attendance of students at school.

We look forward to working in partnership with you to support your child to fulfil their life opportunities.

If a student misses as little as 8 days in a school term, by the end of primary school they'll have missed over a year of school.

Further information regarding school attendance can be obtained from the following websites:

Policy, information and brochures:

Please visit the Department of Education's *Policy library*

The school leaving age:
Please visit the Department of Education's *Wellbeing and Learning* website

Do you need an interpreter?

Interpreting services are available on request, including for the hearing impaired. The Telephone Interpreter Service is available 24 hours a day, seven days a week on 131 450. You will not be charged for this service.

For further advice and questions contact your educational services team

T 131 536

Learning and Engagement

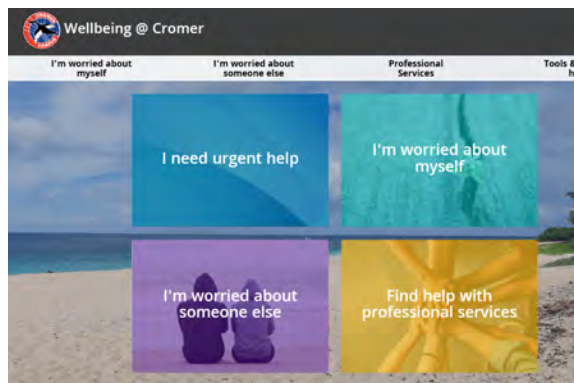
Student Engagement & Interagency Partnerships

T 9244 512

www.dec.nsw.gov.au

© February 2015

NSW Department of Education and Communities



The WELLBEING@ CROMER link is on the front page of the school website.

It contains information, resources and links to support the wellbeing of our students and families.



A further wellbeing initiative is the creation of a whole school Google classroom called:

Wellbeing at NBSC Cromer Campus

The code for this classroom is:

b2dgcwk

This classroom will be regularly updated with resources and is open to students and parents.



Cromer Campus Policy for Students Driving Cars to School

Any student who holds a valid NSW licence and intends to drive to school, either on a regular basis or occasionally, must comply with the school policy and is required to complete the Parent Permission and Student Agreement Form.

Cromer Campus Policy:

1. Students are required to adhere to all road rules and drive in a safe and responsible manner.
2. Student licence details and car make and registration must be recorded with the school.
3. Students are only to use their car for travelling to and from school.
4. Students are not permitted to go to their car during the school day.
5. Students are not to use their cars at lunchtime or in their study periods
6. Students are not permitted to carry other students as passengers to and from school or school events without the written permission of their parent/guardian and the passenger's parent/guardian. The Passenger Permission Form must be completed and submitted to the office.
7. Students are required to notify the school of any passenger who may be travelling with them to and from school as per the Passenger Permission Form.
8. Student drivers, a parent/guardian and, if relevant, the parent/guardian of any passenger, must sign the Parent permission and Student Agreement Form.
9. Cromer Campus does not have space available for student parking. Consequently no student is permitted to park their car within the school grounds.
10. The school's Welfare and Discipline Policy will apply where students fail to meet these obligations. Any unsafe driving behaviour or breaches of road rules will be reported to the police.



Cromer Campus Passenger Permission Form

This form must be completed by a parent/guardian of any student intending to travel to school as a passenger of a student of Cromer Campus who drives a car to and from school unless this student has permission on the original Parent Permission and Student Agreement Form.

I give approval for

Student Passenger's Name: _____

to travel with

Student Driver's Name: _____

We accept all conditions detailed in the Cromer Campus Policy for Students Driving Cars to School.

Parent/Guardian of Student Passenger

Name: _____

Parent/Guardian Signature: _____

Date: _____

Student Passenger

Name: _____

Student Signature: _____

Date: _____

School Approval:

Approved By: _____

Signature: _____

Date: _____

Cromer Campus Students Driving Cars to School Policy 2020



Cromer Campus Parent Permission and Student Agreement Form

***Note:** A photograph of the student's driver licence must be attached to this form.

This form must be completed by any student who intends to drive to school either occasionally or regularly.

Student Name: _____

Car Make/Model: _____

Colour and Registration Number: _____

Note: If the student intends to drive any car other than the one registered on this form, it must also be registered with the school.

Parent Permission

I give permission for _____

to drive to school and, if indicated on the reverse of this form, take the passengers indicated on this form. I am aware of the Cromer Campus Policy for Students Driving Cars to School. **I have seen the completed Cromer Campus Passenger Permission form for the student/s identified on this form.**

Name of Parent: _____ Date: _____

Signature of Parent/Guardian: _____ Date: _____

Student

I agree to adhere to all road rules and drive in a safe and responsible manner and follow the Cromer Campus Policy for Students Driving Cars to School.

Signature of Student:

_____ Date: _____

School Approval:

Approved By: _____

Signature: _____ Date: _____

Names of Students with completed Cromer Campus Passenger Permission forms approved to travel with

_____ Name of Driver.

- 1.
- 2.
- 3.
- 4.



To the School Principal / Headmaster

Conditions of use – Student Opal Card

I write to request your assistance in promoting the importance of using the Student Opal Card correctly.

It is a condition of use that students tap on at the start and tap off at the end of each trip with their Student Opal Card. This is important to ensure accurate patronage data is recorded. This data is used to plan school special and regular route bus services and assists State Transit in ensuring adequate capacity is provided, so students can travel to and from school safely.

Current statistics indicate that many students have failed to tap on or off the Opal readers when travelling. If students do not tap on and off the school bus service, it may appear under-utilised and may be considered for cancellation, based on low passenger numbers.

To assist with our future service planning can you please remind parents and students of this important condition of use so State Transit can continue to provide effective bus services in the future.

For more information and to apply for a School Opal card call 131500 or apply online at <https://www.opal.com.au/en/about-opal/opal-for-school-students>

Thank you for your assistance.

Yours sincerely

Patrick Wu
Customer Operations Manager
Brookvale Depot
State Transit Authority
Ph: 9941 5864
Mob: 0429994138
Patrick_wu@sta.nsw.gov.au



School travel update

Application information

Information for parents, guardians and students

Our school has partnered with Transport for NSW to use the new online School Portal for endorsing school travel applications.

You are now able to manage all your school travel needs online including applying for school travel passes and tracking the status of your application.

The application process has also been simplified so that a new or updated application for school travel passes is only needed when a student is:

- applying for a school travel pass for the first time
- requesting an additional pass as a result of a new shared parental responsibility situation (e.g. joint custody).
- changing school or campus
- changing home address
- receiving an expiry notification
- repeating a school year
- changing their name
- requesting a new transport operator.

This means students who are progressing to year 3 and year 7 only need to reapply if they are changing circumstances.

Students who are not residents and are temporarily in Australia can also provide their visa subclass number and exchange program (if prompted) when applying online, making the application and approval process much faster.

Parents, guardians and students can apply or update their details online at:

www.transportnsw.info/school-students

If you do not have access to the internet contact 131 500 for assistance.