



Cromer Courier

CROMER CAMPUS NEWSLETTER

Respect • Responsibility • Success



/cromercampus



#cromercampus



@cromercampus

<http://www.nbsscromer-h.schools.nsw.edu.au>

nbsccromer-h.school@det.nsw.edu.au

Telephone: 9981 1155

120 South Creek Road CROMER NSW 2099

Fax: 9982 5398



Masked Year 12 2020



Mel Saunders - NSW School Parent of the Year Award

IN THIS ISSUE

Year 12 Graduation (P4)

PBL Winners (P6)

The Big Dig 2020 (P8)

LOTE – Year 7 French (P10)

Year 7 Featured Musicians (P12)

Year 9 Visual Arts (P13)

Cromer Campus Library (P14)

Year 10 Visual Arts (P16)

Year 12 Music (P18)

Integrated Studies
CC's Café Morning Tea (P19)

LOTE – Chinese Takeaway (P20)

Yoga for Wellbeing Year 9 (P22)

Coolmaths@cromercampus (P23)

IS Kookaburras Attack (P24)

TAS Years 9, 10 & 12 (P26)

Duke of Edinburgh Award (P28)

Softball & Lifeline Book Sale (P29)

FROM THE PRINCIPAL



By **JUSTIN HONG**
Principal
NBSC Cromer Campus

NSW Public School Parent of the Year Award 2020

– Melanie Saunders

I emailed all parents last week in regards to this very prestigious and thoroughly-deserved award. Congratulations Mrs Saunders and on behalf of the entire school community thank you for everything you do to support our amazing school and its community. Below is a copy of the nomination and the citation that would have been read out at Parliament house under non-COVID conditions.

Melanie Saunders is a worthy nominee for the Public School Parent of the Year Award 2020 for her outstanding service to Public Education and especially to Northern Beaches Secondary College Cromer Campus and its community.

Her driving desire to make Cromer Campus the school of choice for all parents within our community led to her nomination as President of our school's Parents and Citizens Organisation (P&C) in 2019. As a mother of two school age students herself, Melanie truly understands the demands of parents, teachers and students.

In this role, Melanie has, through her determination, enthusiasm, welcoming demeanour and vitality, managed to increase the number of parents in the P&C. NBSC Cromer Campus can now boast that it has a very active and passionate organisation whose main goal is to assist the school in providing quality educational opportunities for all our students and their families.

Melanie's dynamic personality and tireless endeavours have resulted in her leading many school activities and projects that have directly benefitted both students and staff. She is responsible for the outstanding success of our School's Annual Golf Day, the main fundraising activity on the school calendar, raising much needed funds for the continuation and development of such programs as music, environment, and healthy canteen initiatives within the school.

Melanie has enthusiastically embraced the school's vision of supporting an environmentally sustainable school through the purchase of school bubblers, recycle bins across many areas of the school and the creation of an environmentally friendly and healthy P&C run canteen. Thanks to Melanie the school can now boast that it supports an environmental program that educates its community to value the world in which we all belong and own. Her commitment to helping our environment can also be seen in her willingness to be a vital member on our Cross Campus Environmental Committee.

Melanie understands that effective communication is vital for a successful organisation. With this in mind, she created a P&C website and Teams App ensuring that all parents have the most up to date school information and that they feel valued. Melanie's effective communication skills are also evident in the positive way in which she continually supports the staff at Cromer Campus.

Melanie is appreciated by all for her devotion to her role as President of the P&C but also for her dedication and support of NBSC Cromer Campus.

What a challenging year for all students but especially Year 12. We ran a modified graduation assembly this year which we livestreamed and recorded. Below is an excerpt from my speech.



Year 12 Graduation

It goes without saying that 2020 has been a challenging year for everybody. What has happened in regards to COVID has changed our world, our country, our state and our community. Year 12 you may feel uncertain about the future as many of us do. But I would like to offer you something that you may not have considered, and that is, that uncertain times are very difficult for people who up until now have had certainty. As a graduating student that's not you, you have never had that, no graduating student ever does. Completion of high school has always been a time in a young adult's life where you can never be 100% sure about what's next. I therefore put it to you Year 12 that you are better placed than most to deal with the challenges ahead. You can and will adapt better to your future challenges whether they are related to COVID or not.

Congratulations Year 12, this is the end of 13 years of formal schooling. It has been a privilege over the last six years to watch you turn into the young adults that sit before us today. It is my opinion and the shared opinion of your teachers that you are an incredible group of young adults. I am very proud to have been your Principal and I am really going to miss each and every one of you as you move onto the next exciting phase of your life.

As Principal I am very conscious of the connection that graduating students have with their school. To symbolise your membership to our alumni each of you today will be receiving a Cromer Campus pin in your graduation package. This pin was designed specifically for graduating students. Only graduating students receive this. It is my hope then that in the years to come you will stay connected to the school and keep us informed of your success in later life.



Speaking of the future, in a few weeks' time you will all have to sit the HSC exams. I know that this can be a stressful time but please be assured that the school is here to support you through this time. In the coming weeks work hard. We are asking you to come back straight after the holidays for one final week of school and I believe this is a good thing in helping you finalise your HSC preparation. These next few weeks are vital.

Year 12 and I then collectively thank Year 12's teachers, parents and families, the Year 12 year advisers, and the Year 12 captains and prefects.

In closing Year 12 I would just like to say that often in life, what determines success is not necessarily talent or luck, what usually determines success is hard work, flexibility and resilience. Each of you has the capacity for this. Do not underestimate what you can achieve. I encourage you to be ambitious, because with your education and with the hard work and commitment I just mentioned it is my belief that each one of you is going to go on to do some amazing things. The best parts of your life are still ahead of you.

I sincerely want to thank you Year 12 for your time here at Cromer Campus and wish you the very best not just in your HSC, but in all of your future endeavours, whatever they may be.

Justin Hong
Principal

Year 12 2020 Graduation



Year 12 2020 Graduation



PBL at Cromer Campus 😊

Respect • Responsibility • Success

A big End of Term 3 **Hi** from your PBL Team!

Here at Cromer Campus, Positive Behaviour for Learning (PBL) is our whole-school approach that creates and sustains a positive, safe and supportive school climate where students can learn and develop. Staff, students and our wider school community proudly work together to reinforce our school values of **Respect, Responsibility and Success**.

Every two weeks, students who have recorded a Positive Incident for displaying these values are entered into the draw for one of three much-sought-after Cromer Campus Ten Dollar Canteen Vouchers.

We also recently celebrated the end of another successful Term with our Week 9 MEGA-DRAW, with Vouchers going off to one student in each Year. Congratulations to our winners – Luke (Year 7), Maru (Year 8), Jaden (Year 9), Thalia (Year 10) and Thomas (Year 12).

Your PBL Roving Reporter caught up with our recent winners, and asked them what they liked best about being at Cromer Campus.



Luke – Year 7

“What I like best about Cromer Campus is the new Murals”

We like them too, Luke, especially the groovy ones around our spiffy new water stations – and the spectacular TAS Quad!

Life sure now looks like a beach at Cromer Campus!

Maru - Year 9

“What I like best about Cromer Campus is the English Department” Already a communicator of considerable talent, Maru clearly enjoys honing her skills with the likes of our amazing Mr Moran, and our in-house ED Hollywood Production Team, headed by Mr Hillsmith.



Thomas – Year 12

“What I like best about Cromer Campus is the friendly atmosphere”.

We agree! But we will certainly miss Thomas and all of Year 12 as they move on and expand their horizons next year!

STUDENT ATTENDANCE DURING COVID

- If a student is unwell before school starts, please keep them at home to prevent cross infection with other students and staff. **Students with flu like symptoms will need to produce a negative COVID test and be symptom free in order to return to school.** This is a directive from NSW Health.

- If your student becomes ill at school they must report to the Office and we will call you to collect them immediately. Students will exit via the western carpark gate only during school hours. Please do not enter the school grounds.



- When your child is ill or unable to attend school or will arrive late, please inform the school by:
 - ✓ phoning the office on 9981 1155 in the morning on the day the leave is taken
 - ✓ replying to the SMS message sent to you on the day of the absence – this is a rotating number so you cannot send a message to the school; please only reply to an absence message sent to you.
 - ✓ emailing nbsccromer-h.school@det.nsw.edu.au
 - ✓ sending a written note with the student when they return to school
- Students arriving late to school must scan their Student Identification Card at the office to be issued with a late pass. A note from the parent/carer explaining the late start may be handed in at this time. **Senior students with a study period at the start of the day must sign in at the Office before 9:30am Literacy classes begin or an absence message to parents will be generated.**
- **If your child needs to leave school early, please send a written note requesting a leave pass with the child to school on the day required. This should be handed in at the Office before school starts. You may also call or email the school on the morning the leave pass is required.**

ADMINISTRATION MATTERS

- **Due to COVID restrictions, no visitors, including parents, are permitted to enter the school without an appointment. Please phone the Office to arrange a suitable time.**
- **GATES ARE LOCKED between 8:45am and 2:45pm. Visitor access is through the western staff carpark during this time and only with an appointment.** No vehicles are to enter the school grounds without prior arrangement.
- Please notify the school office of any change to your contact details or the details of those nominated as emergency contacts. In this digital age we also require a current email address for sending reports and other correspondence.



- Please make any payments to the school through our parent online payment system. This is our preferred payment method and also facilitates easy refunding if necessary. You may also click the blue **'PAY NOW'** link on any invoice you receive via email.
- Please avoid cash payments to the school where necessary due to COVID concerns.

HSIE FACULTY

The Big Dig 2020



HSIE FACULTY

The Big Dig 2020



LOTE FACULTY

Year 7 French

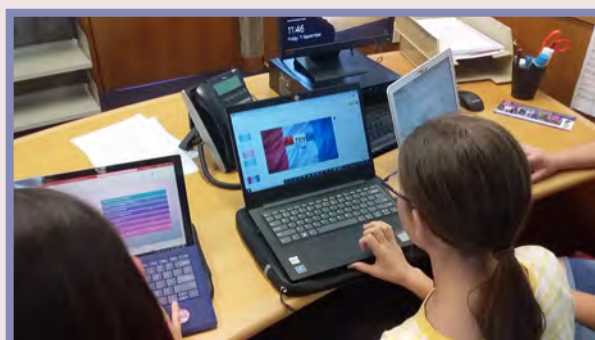
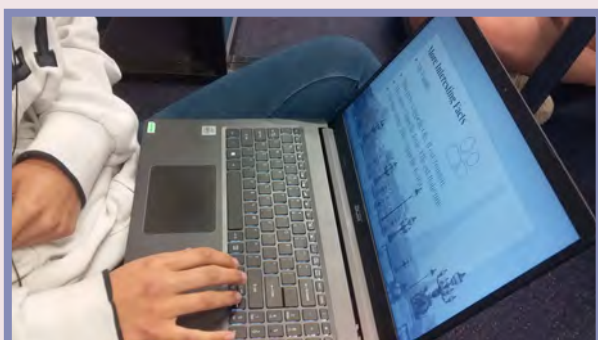
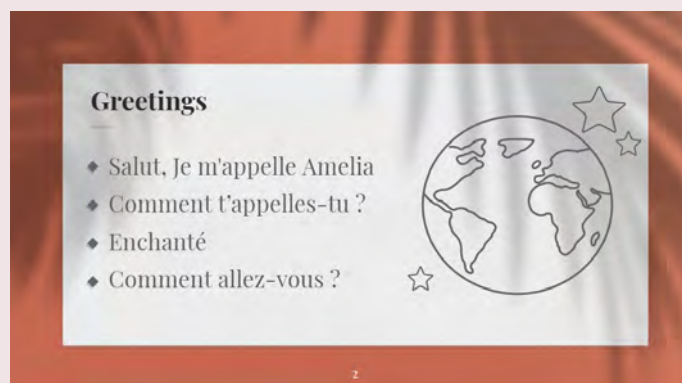
Term 3 7LNGO

Year 7 this year have been given the opportunity to learn French at Cromer Campus as a single term-based language course. 7LNGO have really enjoyed this term studying the course and have been extremely active in their lessons developing their speaking, writing, listening and reading abilities.

Their term project is to create a presentation about themselves all in French. They have worked diligently to record their speeches with correct pronunciation and ensuring they use the correct accents in their writing.

Merci beaucoup pour tous vos efforts ! J'espère que vous avez tous aimé étudier le français ce trimestre.

Thank you very much for all your efforts! I hope you all enjoyed studying French this term.



LOTE FACULTY

Year 7 French

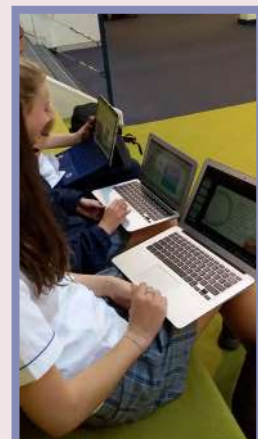
Ma famille / My family

Ma mère s'appelle Jennifer. Mon père s'appelle Nick.
My mother's name is Jennifer. My father's name is Nick.
J'ai une sœur. Elle s'appelle Sophie.
I have one sister. Her name is Sophie.
J'ai deux chiens - I have two dogs.



Likes

I like to play tennis - J'aime jouer au tennis.
I like to eat cake - J'aime manger du gâteau.
I love to play netball - J'adore jouer au netball.
I love to eat an apple - J'aime manger une pomme.



CAPA FACULTY

Year 7 Featured Musicians

Ruby (7P)

What instruments do you play?

I play acoustic/electric guitar and bass guitar.

What is your favourite instrument to play?

My favourite is bass guitar as I have played that for seven years but still love guitar which I have been playing for five years.

What was your inspiration to learn an instrument?

My dad played guitar and when I was five or six I thought it was really cool and I wanted to play. When I got to school I definitely wanted to start learning. Having instruments at home and exposure to music in primary school enhanced my love for music.

What are your current aspirations?

I want to get exposure as a musician in a band and play in concerts.

Do you have a favourite musician?

Harry Styles.

What are your life goals in music?

At this point in time I just know that I want to play music and be in ensembles as it is a lot of fun.

What is your practice regime like?

I have quite a busy schedule with other hobbies so every second day I play music for at least an hour.

What ensembles are you in at Cromer Campus?

I am a bass guitarist in Rock Band and am joining the Guitar Ensemble. I am actually a member of the band 'Ever Girls' which is made up of musicians from Evergreen Music in Brookvale. We have actually played at quite a few local concerts already together.

Joel (7O)

What instruments do you play? I play acoustic/electric guitar and bass guitar.

What is your favourite instrument to play?

My favourite is probably the bass guitar but I have played both guitar and bass for eight years.

What was your inspiration to learn an instrument?

My inspiration came from listening to the radio and I especially loved the guitar in songs I heard. I thought it was so cool and really wanted to learn the guitar. Especially when I heard Queen's song 'Crazy Little Thing Called Love'.

What are your current aspirations?

I am currently wanting to start a band with students at Cromer Campus and hopefully we can make our own original songs and do covers of our favourite songs.

Do you have a favourite musician?

I can't decide – it is between Joji and Oliver Tree.

What are your life goals in music?

Not sure yet to be honest, but I know I want to keep playing music for my life and perform for people.

What is your practice regime like?

I practice for 30 minutes to an hour a day. There will be times though when I am motivated to practice every afternoon for long periods of time.

Why do you play music?

It is easy for me and I find it cool and very chilled to listen to music. I want to pass on my passion and enthusiasm for music onto others.

What ensembles are you in at Cromer Campus?

I am the bass guitarist for Concert and Stage Band and play a mixture of bass and guitar in Rock Band and Senior Guitar.



CAPA FACULTY

Stage 5 Visual Arts -Year 9



Year 9 Visual Arts students are currently responding to the natural world through the creation of clay organic sculptures. Students are developing their hand building and surface decoration techniques, focusing on pattern, form and technique.



What's Happening in the Library of Cromer Campus?

The Library has been a busy place this term with much to Report.....

Breaking News

Firstly we have kicked off our new School Run Challenge – The Great Cromer Reading Challenge 2020.



Staff and students are being challenged to read a range of books from the 31 categories listed above with points collected and prizes to be won! Parents are more than welcome (even encouraged) to join in and more information can be found by visiting the Cromer Campus Library Website



[https://cromerlibrary.wixsite.com/home/reading challenge](https://cromerlibrary.wixsite.com/home/reading%20challenge)



Secondly, we are finally on Instagram so come on over and follow us for all the up to date Library News and loads of recommended reads. Each Monday we post our new Word of the Week to stretch your vocabulary and included is a selection of relevant books to support that word.

You will also find out what is being celebrated or promoted in the library for the week including: Authors' birthdays, Wear it Purple Day, RU OK? Day, Science and History Weeks, Roald Dahl Story Day and many other memorable moments!

Find us at http://instagram.com/cromer_library

Stuck on what to Read?

One of our other new projects has been setting up our Recommended Reads Boards located on the wall just beside the Library office (opposite the lift) This has meant going through all our available books (including the online versions) and coming up with some categories to make finding something to read a little bit easier. Categories include Coming of Age, Dystopian Read, Sci-Fi, Crime and Mystery as well as covering some of the categories from the Reading Challenge eg Books by Indigenous Authors & Books with a black cover. If you are still stuck for ideas just come in and ask.....we'll find you something.



What's Happening in the Library of Cromer Campus?

A Quiet Place to Study for Our Seniors

One of our primary concerns in the Library is offering a quiet space for study for our seniors. The Mezzanine level is a dedicated space just for them and we have a range of resources to support our Year 11 & 12 Students. These include text books and examples of top responses plus past paper for their use across all subjects.

Weeded Books – Black Out Poetry

With some Year 7 & 8 classes we did Blackout Poetry. Using the pages of recently “weeded” books, students isolated words and phrases blacking out the rest to leave a poetic masterpiece!



Lunchtimes in the Library

Monday – Homework Club

Tuesday – Open to Juniors and Seniors

Wednesday - Open to Juniors and Seniors

Thursday – Homework Club & Every 2nd week – Book Trivia (Lower Library)

Friday – Chess Club (Mezzanine Level) - new members are always welcome.

Podcasting @ Cromer

We recently had donated a Podcasting Studio from Rode which is set up for use by the students in the small office in the Library. This gives all students an opportunity to see if they may be the next big Podcasting sensations!

It's all Trivia to us!

Our inaugural Lunch Time Trivia Competition was a great success. We ran a Harry Potter Quiz and attracted 17 groups of students plus a teacher's team. It was won by Wolfstar, followed by Matchu Orlando in 2nd place, 3rd was Dumbledore's Arm and 4th place went to Jessginny. Congratulations to all our participants - it was a closely contested round. Unfortunately our teachers did not make the leader boardmaybe next time!



Wolfstar – winners are grinners!

Homework Club – Open to All

Don't forget how helpful Homework Club can be. It runs four times a week in the Library under the watchful eye of Mr Delrennie and his merry band of helpers. So if some catch-up is needed or just getting on top of homework would help, everyone is welcome. Every Monday and Thursday @ Lunchtime as well as Tuesday & Wednesday after School... afternoon tea is supplied!

The Library Monitors Team

On a final note we would like to thank our wonderful Junior Librarians who continue to do a great Job helping both the students and the Teacher-Librarian Ms Black in the library. They man the front desk every Recess and Lunch making sure all our visitors use the hand sanitiser and help with all of our returned books and new loans.



CAPA FACULTY

Stage 5 Visual Arts - Year 10

Year 10 Visual Arts students are currently exploring a unit on Street Art. They have recently developed their writing skills through a written 'extended' response on the works of Banksy and Keith Haring. Students are now having some fun working collaboratively on an artmaking task. Their contemporary expressive works have been inspired by street artist Jean- Michel Basquiat. They are investigating the expressive qualities of exaggerated mark making, materials, bold colour, text and layers.



CAPA FACULTY

Stage 5 Visual Arts -Year 10



CAPA FACULTY

Year 12 Music



The Year 12 Music 1 class completed their Trial Performance Exam in Week 6 and showcased some amazing talent. Every one of them has worked incredibly hard over the past two years and the CAPA faculty is proud of their dedication and hard work.

Their best performance pieces were used for the school bells for Week 7 & 8 as we could not have our annual showcase due to current health regulations. Many younger students have asked who they are and have told the music teachers that they want to have the same opportunity to have their music played over the bells too when they are in HSC music.

In Week 8, Year 12 had their HSC Performance Exam and they performed at a much higher standard for the examiners. They have come a long way and have always been gracious in accepting constructive feedback on their pieces and compositions.

Thank you Ben, Marlie, Matt, Bailey, Skye and Ashely for being an awesome Year 12 class. It was great teaching you...I will never have a class like you again!

Mr Marc Rolet
Music Teacher



INTEGRATED STUDIES FACULTY

CC'S CAFE MORNING TEA

During Term 3 Mrs Francis' class has been learning to make coffee at our CC's Café under the watchful eye of Mr McKee. Ms Bird then joined the group and we planned a Coffee and Cookie morning tea for six guests.

The students made invitations, menus, arranged orders and prepared the Café as well as make the coffee.

It was a huge success and the students are ready to host another morning tea during Term 4.



LOTE FACULTY

中餐外卖

Chinese Takeaway



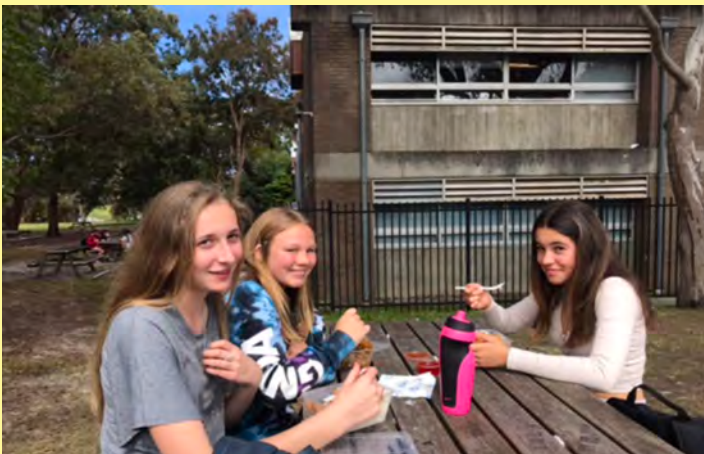
蜂蜜鸡

Honey Chicken



古老肉

Sweet and Sour Pork



LOTE FACULTY

Chinese Food Review - by Maru Jedeloo Conroy



Fried Rice

1. What food did you eat?

- Fried rice Chǎofàn

2. Describe the food you ordered

- Fried rice with various vegetables and egg.

3. What did you like about your food?

- I liked that there were many flavours, and the fried rice was perfectly fried.

4. What feedback can you give the restaurant for feedback?

- Maybe an optional sauce to go with the veggie fried rice.

5. Are you okay for your answer to be in the school newsletter? Yes or no?

- Yes



Fried Noodles



What food did you eat?
Vegetarian fried rice.

Describe the food you ordered?
I ate the vegetarian fried rice, without egg. The rice tasted like seasoned brown, sweet, some sprouts, like they and sauce. It had a sweet and salty flavour, very pleasant, and delicious taste.

What did you like about the food? Why?
I liked the flavour and the rice. It was as well as the lamb and broccoli. I liked that because they were well cooked and had the best flavour.

What feedback can you give the restaurant?
- You can be a team spirit.
- You can be a team spirit.

HSIE FACULTY

Yoga for Wellbeing



On Friday 7th August, a group of Year 9 students participated in some yoga and mindful meditation on the school oval as part of their Geography area of study 'Human Wellbeing.' This topic explores the characteristics and variations in human wellbeing and improving health around the world. One of the benefits of meditation is that it aligns with the elasticity of the brain, so Year 9 students were off to a relaxing start to their day!

Candice McKittrick, HSIE

Coolmaths@cromercampus



Polygons Shaping history!

Dating back to 3600 BC and 700 BC, the Megalithic Temples of Malta are considered to be the oldest free-standing structures on earth. The temples were built during three phases of cultural revolution – Ġgantija (3600-3200BC), Saflieni (3300-3000BC) and Tarxien (3150BC-2500BC).



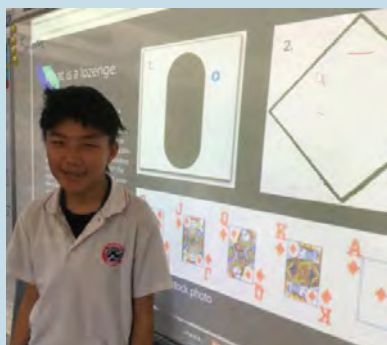
The Maltese temples were constructed in several locations across Malta, with each individual site having its own unique features. However, all of the temples share a common architecture, such as the temple's internal walls being made out of orthostates – a row of large stone slabs. The main variations in the temple's construction lies in the number of chambers, which are referred to as 'apses', with some having three, four, five or even six. The space between the apses' walls was filled with loose stones and earth, which sometimes contain pottery shards. (Source: <https://www.buildingtalk.com>)

Over recent weeks, our Year Nine students have been exploring the geometry of some of the lesser-known polygons, and have shared their findings on the astounding impact these shapes have had on both contemporary architecture and on the history of human civilisation.



Connor and Jack share their insights on the PENTAGON!

Shaun selected the LOZENGE, and for his enthralling presentation also takes out the award for CC's Mathematician of the Month!



What is a lozenge.

A lozenge (/ˈlɒz.ɪndʒ/), often referred to as a diamond – is a form of rhombus. The definition of lozenge is not strictly fixed, and it is sometimes used simply as a synonym (from the French: lozange) for rhombus. Most often, though, lozenge refers to a thin rhombus—a rhombus with two acute and two obtuse angles, especially one with acute angles of 45°. The lozenge shape is often used in parquetry (with acute angles that are 360°/n with n being an integer higher than 4, because they can be used to form a set of tiles of the same shape and size, reusable to cover the plane in various geometric patterns as the result of a tiling process called tessellation in mathematics) and as decoration on ceramics, silverware and textiles. It also features in heraldry and playing cards.

Formulas: 1.) $A = d_1 \times d_2$ 2.) $A = xy, A = lb$

alamy stock photo

INTEGRATED STUDIES FACULTY

KOOKABURRAS ATTACK

As you know Cromer Campus is focussing on our writing skills, and 7/8B have been practising using exciting words and phrases to make our writing more interesting. This is a piece of writing co-constructed by the class about our most recent Community Access.

Great Wall

KOOKABURRAS ATTACK!

The Case of the Stolen Sausages

The students and teachers of Integrated Studies class 7/8B are still being kept awake at night with the fear and anxiety of the events that took place on Tuesday 8th September. A delightful, COVID-safe Community Access walk to Middle Creek Reserve for a picnic took a turn for the worse when a flock of hungry bullying kookaburras invaded.

As soon as the sausages starting sizzling the kookaburras gathered in great numbers in a nearby tree. With their prize in sight the kookaburras swooped with military precision down to the BBQ. The screaming of frightened students kept the kookaburras at bay for only a short time before they continued their attack. A few brave students defended their sausages by spraying water from their drink bottles, as the kookaburras taunted them approaching from different directions. The remaining students formed a Great Wall around the BBQ, shielding the sausages with their own bodies. Unfortunately, the student's efforts were not successful. The kookaburras did not follow social distancing rules and swooped so close to the students that the party-poopng kookaburras were able to take sausage sandwiches straight from the hands of the now frightened and hungry students.



INTEGRATED STUDIES FACULTY

KOOKABURRAS ATTACK

The surviving sausage sandwiches were assembled and eaten as quickly as the students could, some taking shelter underneath the picnic table. As soon as the sausages were gone, some hidden in a cooler bag for those brave students that dared eat more, the kookaburras fought over what they had captured or retreated to the trees. Once the students realised they were once again safe, they shared their stories of survival, some managing a nervous laugh, but most with terror still in their eyes.



James, Riley, Aaron, Nik, Noah, Hunter, David, Joseph, Jed, Oliver, Jade, Soraya, Olivia



Kookas Waiting

Kookas Eating



TAS FACULTY

Engineering Year 10



The students had to make a boat out of foil and paddle pop sticks. The aim was to build a boat to hold as much weight as possible using the principals of floatation.

Food Tech Year 9

Cake Decorating



TAS FACULTY

Hospitality

Year 12

To complete their Hospitality course, students had to do their last service period. They produced a Bento Box which was delivered to staff.



Metalwork Year 9

Students are working on various projects including sheet metal, welding and lathe work.



NBSC Duke of Edinburgh Award

Duke of Edinburgh International Award

In a challenging year Duke of Edinburgh students are continuing to make significant progress across sections of their Award, both in a virtual environment and in the community as restrictions ease.

We are impressed by Cromer campus students who have adapted well to overcome community restrictions and engage in wholistic activities such as Zooniverse, a "people-powered research activity through virtual volunteering", online yoga and fitness workouts, and refining their cooking skills in the kitchen. Others are supporting their community by shopping for the aged, walking the neighbour's dog, volunteering in a swim program for people with a disability, and cleaning up parks and beaches.

Fortunately, most Cromer students (pictured below) completed their Bronze hike in March this year, just before restrictions were enforced by the Department. Due to COVID restrictions remaining Bronze hikes have been cancelled until further information is released by the Department. We are working through solutions with our expedition providers and hope to have these available by Term 4. Fortunately, National Office of the Award program have modified hike requirements due to COVID restrictions and are allowing Bronze participants to complete one 3-day hike in 2020.

Congratulations to the following students who have recently completed their Bronze Duke of Edinburgh award - Georgie Wickings, Olivia Schumacher, Jade Nelson, Josiah Pugh and Max Ward.



A reminder the Duke of Edinburgh program is offered to NBSC students from Year 9 and above.

Information Nights for 2021 will be held early in Term 1. For more information refer to the *College Opportunities* tab on the College website <https://nbsc.schools.nsw.gov.au/>

Update session via Zoom in Week 10

Current registered Duke of Edinburgh students and parents/caregivers are encouraged to join a Zoom call with Ms Busse Wednesday September 23rd at 4.30pm for updated news and guidance around the program. Check the College website early next week for login details. <https://nbsc.schools.nsw.gov.au/>

Ms V Busse
Duke of Edinburgh Award
Coordinator for Northern Beaches Secondary College



COME AND TRY SOFTBALL WITH US

REGISTRATIONS ARE NOW OPEN!



Looking for a friendly summer team sport with an emphasis on building skills, confidence, and having fun?

Come and join other high school students from all over the Northern Beaches playing for Peninsula Softball Club in the

Manly-Warringah Softball Association summer competition. We have divisions to suit all playing

abilities and always welcome new players. There are also opportunities to help coach

younger players and develop umpiring skills.

The season starts on October 17 and all games are at Abbott Road in Curl Curl on Saturday mornings.

For more information and to register, see:

www.peninsulasoftball.com.au
peninsulasoftballclub@gmail.com

 **Lifeline** **Saving Lives**
Crisis Support. Suicide Prevention.

**Huge \$2
Spring Book
Clearance**

\$1 CDs and DVDs

BROOKVALE

**Lifeline Depot Driveway
18 Roger Street**

**September 26-27
10am-3pm**



Shop Hours:
Tuesday: 8:00am – 12:00pm
Thursday: 12:00pm – 4:00pm

NBSC Cromer Campus Uniform Shop

		QTY	Size
Girls			
Junior Girls White Blouse/navy Piping	32.00		
Senior Girls Sky Blouse	30.00		
Junior Girls Tartan Skirt	50.00		
Senior Girls Navy Skirt	50.00		
Stretch Navy Slacks	39.00		
Boys			
Senior Boys Shirt	32.00		
Junior/Senior Grey Elastic Waist Shorts	30.00		
Junior/Senior Grey Elastic Waist Pants	35.00		
Junior Boys White Polo	28.00		
Senior Sky Polo	28.00		
Unisex			
School Jacket (limited stock – discontinued item)	60.00		
Softshell Jacket	72.00		
V -Neck Sloppy Joe	38.00		
Jumpers			
Wool Jumper	70.00		
Sports			
Sport Shorts	30.00		
Trackpants	45.00		
Sports Polo	35.00		
Others			
White Socks Regular x 5	20.00		
School Tie	20.00		
Black Winter Stockings	10.00		
Dark Navy Winter Stockings	10.00		
New School Cap	12.00		

Total Amount \$

Date:		
Cardholder Name:	Signature:	
Credit Card Number:		
Type of Credit Card :	<input type="checkbox"/> Visa <input type="checkbox"/> M/C	(American Express Not accepted)
Card Expiry Date:	/	CCV _ _ _
Student Name:	Year:	Contact Number:

Cheques Not Accepted

Coivd-19 Uniform Shop Operation.

Daylight Uniform Shop will operate under normal shop hours.

Cromer Campus is promoting Online orders and student purchases only. Online Ordering is via

<http://daylightsportswear.com/cromer/>

Please have your student bring a copy of the Online Order to the uniform shop for collection

Or

Have the student bring your order form to the Uniform shop to be processed and collected.



EDROLO AT CROMER CAMPUS

Edrolo is an excellent online study program and exam resource that is being utilised across a range of HSC and Preliminary subjects in 2019/2020.

Edrolo is a comprehensive, premium, online, interactive video and exam simulation resource for the HSC/Preliminary. Edrolo is currently used by over 300 schools and 50,000 students, and we are confident it is an extremely valuable investment, providing our students with a differentiated and targeted level of support as they prepare for their most important assessments and examinations.

What exactly is Edrolo?

Edrolo is an extensive study and exam revision resource crafted by master HSC teachers (including exam assessors, textbook authors, and department heads). Edrolo is built in accordance with the NESA Syllabus to guide students through their coursework during the year and final exam preparation.

Edrolo is broken up into two key elements:

- **Theory Master:** Interactive video courses mapped to each subject's syllabus and presented by proven expert teachers. Each subject's Theory Master has hundreds of videos and interactive quiz questions for students to learn from and test themselves on.
- **Exam Master:** Online practice exams offering video solutions for every single exam question incorporating unique insights and diagnostic study tools enabling students to identify and target their individual areas of weakness.

Sitting behind Edrolo are rich analytics that our teachers will use to understand, in greater detail, the learning needs of students, and thereby be able to provide more targeted support than has ever been possible with traditional resources.

How will students use Edrolo?

Our teachers will guide students to make full use of Edrolo in a range of ways across the year, including:

- holiday homework;
- pre-class work;
- post-class consolidation;
- assessment preparation, and;
- exam revision.

How will students access Edrolo?

Edrolo is accessed simply by logging in to the Edrolo website: edrolo.com.au. Every student has been provided with a unique account that helps to track their progress throughout each subject. Students can access Edrolo anywhere there is an internet connection using their device of choice: laptop, PC, tablet or smartphone. There is no downloading of applications or software.

What can you do to support your HSC student?

We recommend you simply start by engaging in conversation about their Edrolo account if you notice they are struggling with their coursework, or don't know what to do next in their study program.

SEE THE PARENT INFORMATION VIDEO ON OUR SCHOOL WEBSITE AND PARENT PORTAL.

An important message about our response to COVID-19

The health and safety of our staff and students is of the utmost importance to our school.

We have implemented a range of measures to help keep our school healthy and reduce the spread of infection and illness. Some simple measures we ask that you adopt include:



Before entering our school

If you have been unwell, with symptoms such as a high temperature, cough, sore throat, and/or shortness of breath, please don't visit our school. Please contact our office to speak to one of our staff.

Ph:



Increase hygiene practices

We request that all staff, students and visitors follow increased personal hygiene practices through regular and thorough hand washing and coughing or sneezing into your elbow or tissue, and disposing of tissues.



Maintaining a healthy distance

For the health and wellbeing of our staff and students, please stand at least **1.5 metres** apart while waiting in our office. Our visitors are encouraged to wait outside for their turn to speak with our office staff. We are also applying social distancing requirements across all areas of the school as is reasonable and practical.



Support for our staff

We appreciate your patience and support while we work together to minimise the impact of COVID 19 in our community.

We know this is a difficult time and we are doing all we can to support our staff and students.

Search inside the Department for up-to-date information and resources.

education.nsw.gov.au



Wellbeing and Safety of Cromer Campus Student Drivers and their Passengers

As is the case with many secondary schools, more and more of our senior students are driving to and from school. While most young drivers are careful, safety conscious and considerate when driving, they are one of the most vulnerable road user groups. Travelling with teenage passengers adds to the risk for these young drivers.

With this in mind, Cromer Campus has a responsibility to take all reasonable measures to ensure the wellbeing and safety of students. Our *Student Driving Policy* outlines what we expect from student drivers and their passengers. A copy of the policy is available on our school web site or can be obtained from the school office.

A *Parent Permission and Student Agreement Form* for both drivers and passengers can also be found on the school web site or obtained from the school office. All student drivers and parents/guardians are required to sign this form and return it to the school.

Please note: There is no parking available for students on school grounds.

Cromer Campus 2020 Policy for Students Driving Cars to School plus the permission and agreement forms are available on pages 18 & 19 of this Cromer Courier.



Compulsory School Attendance

Information for parents

Education for your child is important and regular attendance at school is essential for your child to achieve their educational best and increase their career and life options. NSW public schools work in partnership with parents to encourage and support regular attendance of children and young people. When your child attends school every day, learning becomes easier and your child will build and maintain friendships with other children.

What are my legal responsibilities?

Education in New South Wales is compulsory for all children between the ages of six years and below the minimum school leaving age. The *Education Act 1990* requires that parents ensure their children of compulsory school age are enrolled at, and regularly attend school, or, are registered with the Board of Studies, Teaching and Educational Standards for homeschooling.

Once enrolled, children are required to attend school each day it is open for students.

The importance of arriving on time

Arriving at school and class on time:

- Ensures that students do not miss out on important learning activities scheduled early in the day
- Helps students learn the importance of punctuality and routine
- Give students time to greet their friends before class
- Reduces classroom disruption

Lateness is recorded as a partial absence and must be explained by parents.

What if my child has to be away from school?

On occasion, your child may need to be absent from school. Justified reasons for student absences may include:

- being sick, or having an infectious disease
- having an unavoidable medical appointment
- being required to attend a recognised religious holiday
- exceptional or urgent family circumstance (e.g. attending a funeral)

Following an absence from school you must ensure that within 7 days you provide your child's school with a verbal or written explanation for the absence. However, if the school has not received an explanation from you within 2 days, the school may contact you to discuss the absence.

Principals may decline to accept an explanation that you have provided if they do not believe the absence is in the best interest of your child. In these circumstances your child's absence would be recorded as unjustified. When this happens the principal will discuss their decision with you and the reasons why.

Principals may request medical certificates or other documentation when frequent or long term absences are explained as being due to illness. Principals may also seek parental permission to speak with medical specialists to obtain information to collaboratively develop a health care plan to support your child. If the request is denied, the principal can record the absences as unjustified.

Travel

Families are encouraged to travel during school holidays. If travel during school term is necessary, discuss this with your child's school principal. An *Application for Extended Leave* may need to be completed. Absences relating to travel will be marked as leave on the roll and therefore contribute to your child's total absences for the year.

In some circumstances students may be eligible to enrol in distance education for travel periods over 50 school days. This should be discussed with your child's school principal.



My child won't go to school. What should I do?

You should contact the principal as soon as possible to discuss the issue and ask for help. Strategies to help improve attendance may include a referral to the school's learning and support team or linking your child with appropriate support networks. The principal may seek further support from the Home School Liaison Program to develop an Attendance Improvement Plan.

What might happen if my child continues to have unacceptable absences?

It is important to understand that the Department of Education and Communities may be required to take further action where children of compulsory school age have recurring numbers of unexplained or unjustified absences from school.

Some of the following actions may be undertaken:

- Compulsory Schooling Conferences

You may be asked, along with your child, to attend a Compulsory Schooling Conference. The conference will help to identify the supports your child may need to have in place so they attend school regularly. The school, parents and agencies will work together to develop an agreed plan (known as Undertakings) to support your child's attendance at school.

- Application to the Children's Court – Compulsory Schooling Order

If your child's attendance at school remains unsatisfactory the Department

may apply to the Children's Court for a *Compulsory Schooling Order*. The Children's Court magistrate may order a Compulsory Schooling Conference to be convened.

- Prosecution in the Local Court

School and Department staff remain committed to working in partnership with you to address the issues which are preventing your child's full participation at school. In circumstances where a breach of compulsory schooling orders occurs further action may be taken against a parent in the Local Court. The result of court action can be the imposition of a community service order or a fine.

What age can my child leave school?

All New South Wales students must complete Year 10 or its equivalent. After Year 10, and up until they reach 17 years of age, there are a range of flexible options for students to complete their schooling.

Working in Partnership

The Department of Education and Communities recognises that working collaboratively with students and their families is the best way to support the regular attendance of students at school.

We look forward to working in partnership with you to support your child to fulfil their life opportunities.

If a student misses as little as 8 days in a school term, by the end of primary school they'll have missed over a year of school.

Further information regarding school attendance can be obtained from the following websites:

Policy, information and brochures:

Please visit the Department of Education's *Policy library*

The school leaving age:
Please visit the Department of Education's *Wellbeing and Learning website*

Do you need an interpreter?

Interpreting services are available on request, including for the hearing impaired. The Telephone Interpreter Service is available 24 hours a day, seven days a week on 131 450. You will not be charged for this service.

For further advice and questions contact your educational services team

T 131 536

Learning and Engagement

Student Engagement & Interagency Partnerships

T 9244 512

www.dec.nsw.gov.au

© February 2015

NSW Department of Education and Communities



The WELLBEING@CROMER link is on the front page of the school website.

It contains information, resources and links to support the wellbeing of our students and families.



A further wellbeing initiative is the creation of a whole school Google classroom called:

Wellbeing at NBSC Cromer Campus

The code for this classroom is:

b2dgcwk

This classroom will be regularly updated with resources and is open to students and parents.



Cromer Campus Policy for Students Driving Cars to School

Any student who holds a valid NSW licence and intends to drive to school, either on a regular basis or occasionally, must comply with the school policy and is required to complete the Parent Permission and Student Agreement Form.

Cromer Campus Policy:

1. Students are required to adhere to all road rules and drive in a safe and responsible manner.
2. Student licence details and car make and registration must be recorded with the school.
3. Students are only to use their car for travelling to and from school.
4. Students are not permitted to go to their car during the school day.
5. Students are not to use their cars at lunchtime or in their study periods
6. Students are not permitted to carry other students as passengers to and from school or school events without the written permission of their parent/guardian and the passenger's parent/guardian. The Passenger Permission Form must be completed and submitted to the office.
7. Students are required to notify the school of any passenger who may be travelling with them to and from school as per the Passenger Permission Form.
8. Student drivers, a parent/guardian and, if relevant, the parent/guardian of any passenger, must sign the Parent permission and Student Agreement Form.
9. Cromer Campus does not have space available for student parking. Consequently no student is permitted to park their car within the school grounds.
10. The school's Welfare and Discipline Policy will apply where students fail to meet these obligations. Any unsafe driving behaviour or breaches of road rules will be reported to the police.



Cromer Campus Passenger Permission Form

This form must be completed by a parent/guardian of any student intending to travel to school as a passenger of a student of Cromer Campus who drives a car to and from school unless this student has permission on the original Parent Permission and Student Agreement Form.

I give approval for

Student Passenger's Name: _____

to travel with

Student Driver's Name: _____

We accept all conditions detailed in the Cromer Campus Policy for Students Driving Cars to School.

Parent/Guardian of Student Passenger

Name: _____

Parent/Guardian Signature: _____

Date: _____

Student Passenger

Name: _____

Student Signature: _____

Date: _____

School Approval:

Approved By: _____

Signature: _____

Date: _____

Cromer Campus Students Driving Cars to School Policy 2020



Cromer Campus Parent Permission and Student Agreement Form

***Note:** A photograph of the student's driver licence must be attached to this form.

This form must be completed by any student who intends to drive to school either occasionally or regularly.

Student Name: _____

Car Make/Model: _____

Colour and Registration Number: _____

Note: If the student intends to drive any car other than the one registered on this form, it must also be registered with the school.

Parent Permission

I give permission for _____

to drive to school and, if indicated on the reverse of this form, take the passengers indicated on this form. I am aware of the Cromer Campus Policy for Students Driving Cars to School. **I have seen the completed Cromer Campus Passenger Permission form for the student/s identified on this form.**

Name of Parent: _____ Date: _____

Signature of Parent/Guardian: _____ Date: _____

Student

I agree to adhere to all road rules and drive in a safe and responsible manner and follow the Cromer Campus Policy for Students Driving Cars to School.

Signature of Student:

_____ Date: _____

School Approval:

Approved By: _____

Signature: _____ Date: _____

Names of Students with completed Cromer Campus Passenger Permission forms approved to travel with

_____ Name of Driver.

- 1.
- 2.
- 3.
- 4.



To the School Principal / Headmaster

Conditions of use – Student Opal Card

I write to request your assistance in promoting the importance of using the Student Opal Card correctly.

It is a condition of use that students tap on at the start and tap off at the end of each trip with their Student Opal Card. This is important to ensure accurate patronage data is recorded. This data is used to plan school special and regular route bus services and assists State Transit in ensuring adequate capacity is provided, so students can travel to and from school safely.

Current statistics indicate that many students have failed to tap on or off the Opal readers when travelling. If students do not tap on and off the school bus service, it may appear under-utilised and may be considered for cancellation, based on low passenger numbers.

To assist with our future service planning can you please remind parents and students of this important condition of use so State Transit can continue to provide effective bus services in the future.

For more information and to apply for a School Opal card call 131500 or apply online at <https://www.opal.com.au/en/about-opal/opal-for-school-students>

Thank you for your assistance.

Yours sincerely

Patrick Wu
Customer Operations Manager
Brookvale Depot
State Transit Authority
Ph: 9941 5864
Mob: 0429994138
Patrick_wu@sta.nsw.gov.au



School travel update

Application information

Information for parents, guardians and students

Our school has partnered with Transport for NSW to use the new online School Portal for endorsing school travel applications.

You are now able to manage all your school travel needs online including applying for school travel passes and tracking the status of your application.

The application process has also been simplified so that a new or updated application for school travel passes is only needed when a student is:

- applying for a school travel pass for the first time
- requesting an additional pass as a result of a new shared parental responsibility situation (e.g. joint custody).
- changing school or campus
- changing home address
- receiving an expiry notification
- repeating a school year
- changing their name
- requesting a new transport operator.

This means students who are progressing to year 3 and year 7 only need to reapply if they are changing circumstances.

Students who are not residents and are temporarily in Australia can also provide their visa subclass number and exchange program (if prompted) when applying online, making the application and approval process much faster.

Parents, guardians and students can apply or update their details online at:

www.transportnsw.info/school-students

If you do not have access to the internet contact 131 500 for assistance.

