



Cromer Courier

CROMER CAMPUS NEWSLETTER

Respect • Responsibility • Success



/cromercampus



#cromercampus



@cromercampus

<http://www.nbsscromer-h.schools.nsw.edu.au>

nbsccromer-h.school@det.nsw.edu.au

Telephone: 9981 1155

120 South Creek Road CROMER NSW 2099

Fax: 9982 5398



P & C Meeting
via ZOOM
7.00 pm
Tuesday 8th
September
2020



FROM THE PRINCIPAL



By **JUSTIN HONG**
Principal
NBSC Cromer Campus

We work in partnership with our school community and nowhere is that more apparent than through the support of our amazing P&C led by our president Mrs Melanie Saunders. At the end of this article there is a collage of photos showcasing some of the most recent accomplishments of the P&C. This includes new water bubblers installed around the school which contain water bottle fillers and professionally painted murals covering a number of our brick walls, which have reinvigorated these areas.

IN THIS ISSUE

PDHPE/Sport (Page 4)



Integrated Studies World Travellers (Page 7)



HSIE Rwandan Refugee (Page 12)



PLUS..

Student Attendance & Admin (P3)
Australian Geography Comp (P7)
LOTE Dragon Boat Festival (P8)
Coolmaths@cromer (P9)
CAPA Featured Artists (P10)
and more.....

Principal's report continued...

These murals all contain a water theme and look spectacular. Seen in the photos is one of our students riding the Cromer Campus wave without getting wet! You can also see our new recycling and rubbish bins strategically placed in every area of our playground. This initiative also involved the students of our SRC, who were instrumental in the planning of this recycling program. You can also see a picture of me holding a brand new coffee mug. The P&C purchased one for every staff member as a big thank you for all of our hard work. My staff and I want to thank the P&C for all of their support. The students have also expressed their great appreciation for the P&C's tireless efforts in enhancing the school's facilities and making our great school even better.

Our next P&C meeting will be held in week 8, Tuesday the 8th September at 7pm. The meeting is via ZOOM so you don't even need to leave home. I encourage all parents to join us - the P&C have big plans for their next exciting round of school improvements.

COVID Update

The school is almost back to full operation with most activities occurring. Below I have attached a reminder of activities that are being considered by the Department of Education but are currently on hold for this term. If I receive further urgent important updates then I will email this information to all parents. I appreciate everybody's patience and understanding, especially around us limiting visitors onto our school site and the locking of gates. These are important measures in assisting us to minimise risk, and reinforce the importance of all community members remaining vigilant and virus free.

Activities under consideration from Term 3

The following events will be reconsidered during Term 3. For now, these events must remain on hold.

- School camps
- Excursions
- Parent attendance at assemblies and other school events (e.g. graduation ceremonies or student speech events)
- Parent volunteers – e.g. parent reading helpers (note: canteen and uniform shop volunteers are permitted)
- Interstate excursions
- School-based activities that involve large gathering of adults are not permitted at this time. These include parent/community gatherings such as parent functions, working bees, fundraisers, school BBQs, large parent information evenings, and large on-site cultural events. These large gatherings and following activities will continue to be reviewed and assessed based on AHPPC and NSW Health advice and may be permitted at a later date.



STUDENT ATTENDANCE DURING COVID

- If a student is unwell before school starts, please keep them at home to prevent cross infection with other students and staff.
- If your student becomes ill at school they must report to the Office and we will call you to collect them immediately. Students will exit via the western carpark gate only during school hours. Please do not enter the school grounds.
- When your child is ill or unable to attend school or will arrive late, please inform the school by:
 - ✓ phoning the office on 9981 1155 in the morning on the day the leave is taken
 - ✓ replying to the SMS message sent to you on the day of the absence – this is a rotating number so you cannot send a message to the school; please only reply to an absence message sent to you.
 - ✓ emailing nbsccromer-h.school@det.nsw.edu.au
 - ✓ sending a written note with the student when they return to school
- Students arriving late to school must scan their Student Identification Card at the office to be issued with a late pass. A note from the parent/carer explaining the late start may be handed in at this time. Senior students with a study period at the start of the day must sign in at the Office before 9:30am Literacy classes begin or an absence message to parents will be generated.
- If your child needs to leave school early, please send a written note requesting a leave pass with the child to school on the day required. This should be handed in at the Office before school starts. You may also call or email the school on the morning the leave pass is required.



ADMINISTRATION MATTERS

- Due to COVID restrictions, no visitors, including parents, are permitted to enter the school without an appointment. Please phone the Office to arrange a suitable time.
- GATES ARE LOCKED between 8:45am and 2:45pm. Visitor access is through the western staff carpark during this time and only with an appointment. No vehicles are to enter the school grounds without prior arrangement.
- Please notify the school office of any change to your contact details or the details of those nominated as emergency contacts. In this digital age we also require a current email address for sending reports and other correspondence.



- Please make any payments to the school through our parent online payment system. This is our preferred payment method and also facilitates easy refunding if necessary. You may also click the blue 'PAY NOW' link on any invoice you receive via email.
- Please avoid cash payments to the school where necessary due to COVID concerns.

PDHPE FACULTY

PDHPE/Sport Report Term 3



ACTIVITY	
Beach activities	Power walking in the local area
Weights room	Putt Putt Golf / Golf driving range
Multi- sports	Dragon boating
Racquet/stick games	Futsal
Ball sports	Gymnastics
Ten Pin Bowling 1	Chocolate Box Cross Training
Ten Pin Bowling 2	Yoga

Term 3 Recreational Sport for Years 8-10 is off and running with a wide variety of activities in place to cater for all interests.

It's really pleasing to see all students back and engaged in physical activity in these uncertain times. The sports listed here are running this term and as you can see there is plenty of choice.



Athletics Update

The inaugural NBSC Athletics Carnival will be held at Narrabeen on Friday the 21st of August. This is a unique opportunity for students to participate in athletic events and compete against other students from across the college.



Cromer Campus will be fielding a team and it has been posted on the school notice boards. Selections have been based on past results, interest in the event and for Year 7, a mini carnival being conducted during sport time to gauge ability and interest for students who wish to attend. The cost will be \$15 and credit may be accessed on your account if you have paid for other events that have been cancelled this year.

If there are questions about this carnival please contact our Sport Coordinators Monique Pontifex and Madeline Gale at school on 9981 1155 ext 117 or 109.



PDHPE FACULTY

PDHPE/Sport Report Term 3

PDHPE Focus - Educational Gymnastics

Year 7 have been participating in Educational Gymnastics this term. It's been great to see kids being creative with the themes of space, movement, balance and the relationship between the base of support and the centre of gravity.

Educational Gymnastics requires lots of cooperation as many of the activities are done in pairs or small groups. Students have to problem solve, create, execute and maintain complex balance form using stability and the educational gymnastics themes.



Safe Hygiene Practices Continue

A further reminder, to help maintain the highest possible hygiene standards during Physical Education and Sport Classes we encourage students to bring:

- Their freshly washed PE Uniform
- A personal hand towel
- A personal drink bottle
- Personal sanitiser if you have some and prefer to bring your own. However sanitiser is provided for all students at school.

J Hanna
Head Teacher PDHPE



HSIE FACULTY

Australian Geography Competition

Congratulations to all students who completed the Australian Geography Competition over the first weeks of Term 3! We are very proud of all students who participated and are very excited to see how everyone performed!

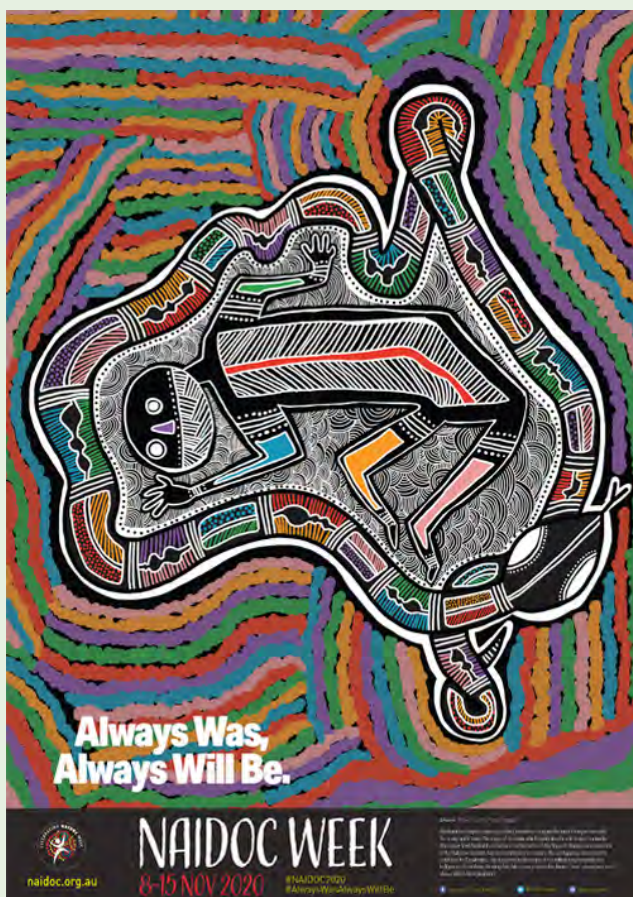
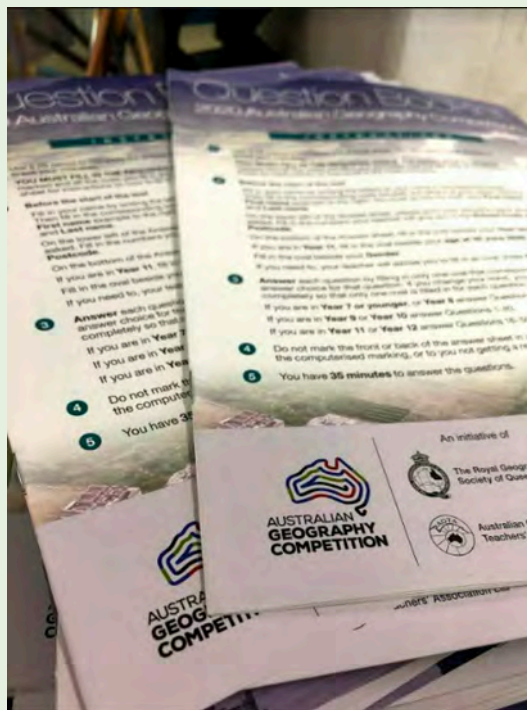
The Australian Geography Competition is a contest for Australian secondary school students, assessing their geographical knowledge and skills. The Competition aims to encourage student interest in geography and to reward student excellence.

Initially held in 1995, the Competition has a wide appeal to students, their families and teachers. Over 73,000 students from 780 schools entered in 2019.

It consists of multiple-choice questions testing geographical knowledge and skills. The answer sheets are centrally marked and all participants receive results and certificates (Top 1% in Australia, high distinction, distinction, credit or participation). Students will be graded at school year levels – Year 7, Year 8, Year 9, Year 10, Year 11, and Year 12. Outstanding students at each age level win prizes which include book vouchers and special certificates, and medals for first in Australia.

The top male and female students in Year 11 (aged between 15 and 18 years old on 30 June, 2020) in each State and the combined Territories, are invited to participate in the annual Geography's Big Week Out. Geography's Big Week Out is a six day event which focuses on fieldwork, spatial technologies and analytical skills. Australia's teams to the annual International Geography Olympiad are selected from the students at the Geography's Big Week Out. Flights, accommodation, and meals for participants at the Geography's Big Week Out and the International Geography Olympiad are met by the Competition.

For more information, head to <https://www.geographycompetition.org.au/>



The National NAIDOC Committee has decided to postpone NAIDOC Week 2020. NAIDOC Week will now be held 8-15 November 2020 in the interest of safety for our communities.

INTEGRATED STUDIES FACULTY

World Travellers During Covid-19!

Integrated Studies Students Become World Travellers During Covid-19!

Teachers and students of Integrated Studies were initially very disappointed to have their fortnightly Community Access outings suddenly cancelled during Term 1. This learning activity helps our students with travel planning, money handling, social skills, communication and many more important life skills.

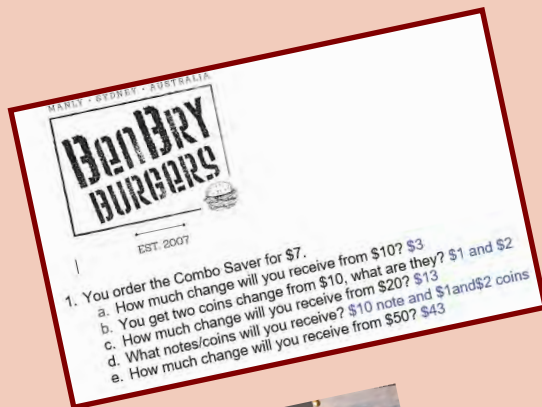
Like teachers all around the world we had some challenges to overcome and this was a big one!

Fortunately the team came up with some very innovative and engaging ideas to continue with our students learning including a **virtual trip to Cincinatti Zoo, Disneyland and another to Taronga Zoo**. Students planned the journey, calculated costs, observed and learned about particular animals and other features of their destination. They shared their learning with peers via Google Classroom and video meetings using Microsoft Teams or Zoom. Other learning activities involved **online research, imagined shopping trips and using local restaurant menus** to practice working mathematically.

Upon returning to school these themed learning activities continued due to the restrictions. One class took a virtual **submarine ride to New Zealand** - they experienced joy flights over major sites, wrote postcards to family members and created watercolour landscapes. Another journey started with a **rocket ride to Japan**, complete with boarding cards and passport stamps. Students experienced some cultural insights, learned some survival phrases and experimented with painting the spectacular cherry blossoms. **South Africa** was also a popular destination for students.

Bon voyage!

Michelle Golding IS Teacher



LOTE FACULTY

端午节 Dragon Boat Festival

Tia Jewell:

In China, the Dragon Boat Festival is one of the three major traditional festive occasions, along with the Spring Festival and the Mid-Autumn Festival. Among Chinese-speakers, it is better known as Duanwu Festival or Double Fifth Festival. Amongst its various customs and activities is dragon boat racing, which is the most eye-catching event of the Duanwu Festival. It involves teams of rowers competing in special vessels that feature dragon decorations at the bow and stern.

Amy Saunders:

The traditional cultural values that influence the psyche of the Chinese people are harmony, benevolence, righteousness, courtesy, wisdom, honesty, loyalty, and filial piety. The Dragon Boat Festival is a traditional holiday that commemorates the life and death of the famous Chinese scholar Qu Yuan.



Coolmaths@cromercampus



What do Federation Square and the 4th Century synagogue mosaic floor at Apamea, Syria, have in common?

Sadly, a trip to Melbourne is not on the agenda this week, but for those of you who have been there, the striking architecture of Federation Square was no doubt a highlight!

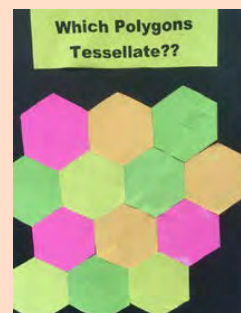
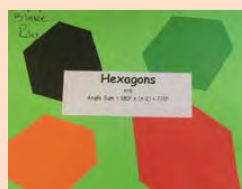
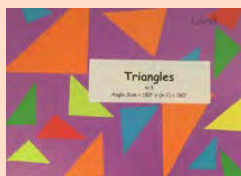


Fed Square's distinctive look was inspired by fractals: complex patterns that are identical both on a smaller scale and when viewed as a whole. Three cladding materials – sandstone, zinc and glass – all form triangular pinwheel grids. This modular system uses five single triangles (all of the same size and proportion) to make up a larger triangular 'panel'. Following the same geometric logic, five panels are joined together to create a larger triangular 'mega panel', which is then mounted onto the structural frame to form the visible façade. (Source: <https://fedsquare.com/history-design>).

The 4th Century synagogue mosaic floor at Apamea, Syria, also uses complex patterns of tessellating polygons to achieve the same effect. But why do some combinations of polygons (such as triangles, rectangles and hexagons) tessellate, and others not??

All regular polygons that meet must have a common 360 degree vertex in order to be used in a tessellation. For example, three hexagons, whose interior angles equal 120 degrees, come together to form a vertex of 360 degrees, while a regular pentagon, whose interior angles measure 108 degrees cannot equal a vertex of 360 degrees. BUT a house pentagon has two right angles. Because those two angles sum to 180° they can fit along a line, and the other three angles sum to $360^\circ (= 540^\circ - 180^\circ)$ and fit around a vertex!!

Over recent weeks, our Year 10 students have been exploring the surprisingly complex geometry of some higher-order polygons – with interesting results!

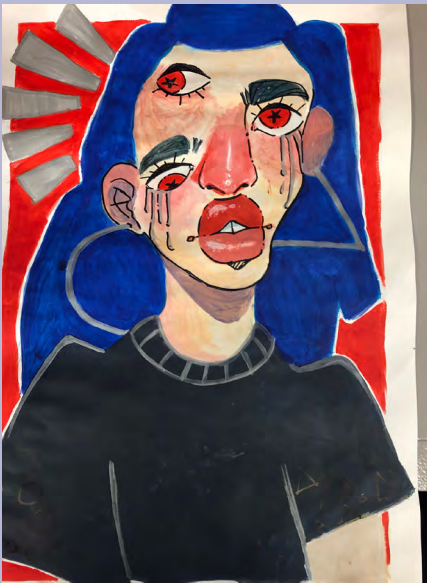


CAPA FACULTY

Visual Arts

This year Cromer Campus is lucky to have the very talented Amelia in Year 7 join our school. Not only is Amelia in our extension class but she is also an extraordinarily talented artist.

Amelia has been drawing and painting for the past four years. While she spends many hours at home teaching herself and improving her skills through YouTube tutorials, Amelia now attends the Cromer Campus ART CLUB to further extend and develop her artmaking skills. She is looking forward to continuing her studies in Visual Arts at Cromer Campus.

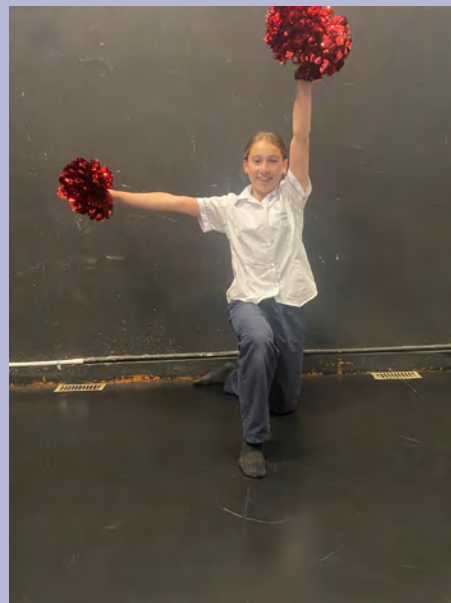


CAPA FACULTY

Dance

Meet one of our new members this year! Meisha is currently in Year 7 and is in the Cromer Campus performance class. She has demonstrated a strong passion and love for dance throughout the year. Meisha is a part of all the extra-curricular teams such as Pom, Hip Hop, Jazz and Cheer and is a committed team member.

When asked what she loves about school dance Meisha replied "I love dance at Cromer as it is lots of fun and I like the styles." Meisha also said she has made many friends in the groups and connected with people who also love dance!



HSIE FACULTY

Rwandan Refugee Speaker



HSIE FACULTY

Rwandan Refugee Speaker

On Friday August 7th, Olivier Kameya came to speak to Year 9, 10, 11 and 12 about his experience during the Rwandan Genocide of 1994. He told the story of how his family was targeted due to being outspoken Tutsis and how, as a 19 year old, he went from hiding place to hiding place alone in an attempt to survive the horrific circumstances around him. After the event, Olivier discovered that a large portion of his family had died but he still sought to play an active role in reconciliation. As such, he created a reconciliation project that focused on changing the perspective of young Rwandans so a healing process could take place.

The students were given time to apply Olivier's story to their current HSIE topics:

Year 9 examining the role of human wellbeing;

Year 10 highlighting rights and freedoms issues;

Year 11 applying their learning from their Preliminary studies;

Year 12 exploring the connections to their HSC topics.





Shop Hours:
Tuesday: 8:00am – 12:00pm
Thursday: 12:00pm – 4:00pm

NBSC Cromer Campus Uniform Shop

		QTY	Size
Girls			
Junior Girls White Blouse/navy Piping	32.00		
Senior Girls Sky Blouse	30.00		
Junior Girls Tartan Skirt	50.00		
Senior Girls Navy Skirt	50.00		
Stretch Navy Slacks	39.00		
Boys			
Senior Boys Shirt	32.00		
Junior/Senior Grey Elastic Waist Shorts	30.00		
Junior/Senior Grey Elastic Waist Pants	35.00		
Junior Boys White Polo	28.00		
Senior Sky Polo	28.00		
Unisex			
School Jacket (limited stock – discontinued item)	60.00		
Softshell Jacket	72.00		
V -Neck Sloppy Joe	38.00		
Jumpers			
Wool Jumper	70.00		
Sports			
Sport Shorts	30.00		
Trackpants	45.00		
Sports Polo	35.00		
Others			
White Socks Regular x 5	20.00		
School Tie	20.00		
Black Winter Stockings	10.00		
Dark Navy Winter Stockings	10.00		
New School Cap	12.00		

Total Amount \$

Date:		
Cardholder Name:	Signature:	
Credit Card Number:		
Type of Credit Card :	<input type="checkbox"/> Visa <input type="checkbox"/> M/C	(American Express Not accepted)
Card Expiry Date:	/	CCV _ _ _
Student Name:	Year:	Contact Number:

Cheques Not Accepted

Coivd-19 Uniform Shop Operation.

Daylight Uniform Shop will operate under normal shop hours.

Cromer Campus is promoting Online orders and student purchases only. Online Ordering is via

<http://daylightsportswear.com/cromer/>

Please have your student bring a copy of the Online Order to the uniform shop for collection

Or

Have the student bring your order form to the Uniform shop to be processed and collected.

An important message about our response to COVID-19

The health and safety of our staff and students is of the utmost importance to our school.

We have implemented a range of measures to help keep our school healthy and reduce the spread of infection and illness. Some simple measures we ask that you adopt include:



Before entering our school

If you have been unwell, with symptoms such as a high temperature, cough, sore throat, and/or shortness of breath, please don't visit our school. Please contact our office to speak to one of our staff.

Ph:



Increase hygiene practices

We request that all staff, students and visitors follow increased personal hygiene practices through regular and thorough hand washing and coughing or sneezing into your elbow or tissue, and disposing of tissues.



Maintaining a healthy distance

For the health and wellbeing of our staff and students, please stand at least **1.5 metres** apart while waiting in our office. Our visitors are encouraged to wait outside for their turn to speak with our office staff. We are also applying social distancing requirements across all areas of the school as is reasonable and practical.



Support for our staff

We appreciate your patience and support while we work together to minimise the impact of COVID 19 in our community.

We know this is a difficult time and we are doing all we can to support our staff and students.

Search Inside the Department for up-to-date information and resources.



EDROLO AT CROMER CAMPUS

Edrolo is an excellent online study program and exam resource that is being utilised across a range of **HSC and Preliminary subjects in 2019/2020**.

Edrolo is a comprehensive, premium, online, interactive video and exam simulation resource for the HSC/Preliminary. Edrolo is currently used by over 300 schools and 50,000 students, and we are confident it is an extremely valuable investment, providing our students with a differentiated and targeted level of support as they prepare for their most important assessments and examinations.

What exactly is Edrolo?

Edrolo is an extensive study and exam revision resource crafted by master HSC teachers (including exam assessors, textbook authors, and department heads). Edrolo is built in accordance with the NESA Syllabus to guide students through their coursework during the year and final exam preparation.

Edrolo is broken up into two key elements:

- **Theory Master:** Interactive video courses mapped to each subject's syllabus and presented by proven expert teachers. Each subject's Theory Master has hundreds of videos and interactive quiz questions for students to learn from and test themselves on.
- **Exam Master:** Online practice exams offering video solutions for every single exam question, incorporating unique insights and diagnostic study tools enabling students to identify and target their individual areas of weakness.

Sitting behind Edrolo are rich analytics that our teachers will use to understand, in greater detail, the learning needs of students, and thereby be able to provide more targeted support than has ever been possible with traditional resources.

How will students use Edrolo?

Our teachers will guide students to make full use of Edrolo in a range of ways across the year, including:

- holiday homework;
- pre-class work;
- post-class consolidation;
- assessment preparation; and
- exam revision.

How will students access Edrolo?

Edrolo is accessed simply by logging in to the Edrolo website: edrolo.com.au. Every student has been provided with a unique account that helps to track their progress throughout each subject. Students can access Edrolo anywhere there is an internet connection using their device of choice: laptop, PC, tablet or smartphone. There is no downloading of applications or software.

What can you do to support your HSC student?

We recommend you simply start by engaging in conversation about their Edrolo account if you notice they are struggling with their coursework, or don't know what to do next in their study program.

SEE THE PARENT INFORMATION VIDEO ON OUR SCHOOL WEBSITE AND PARENT PORTAL.

Wellbeing and Safety of Cromer Campus Student Drivers and their Passengers



As is the case with many secondary schools, more and more of our senior students are driving to and from school. While most young drivers are careful, safety conscious and considerate when driving, they are one of the most vulnerable road user groups. Travelling with teenage passengers adds to the risk for these young drivers.

With this in mind, Cromer Campus has a responsibility to take all reasonable measures to ensure the wellbeing and safety of students. Our *Student Driving Policy* outlines what we expect from student drivers and their passengers. A copy of the policy is available on our school web site or can be obtained from the school office.

A *Parent Permission and Student Agreement Form* for both drivers and passengers can also be found on the school web site or obtained from the school office. All student drivers and parents/guardians are required to sign this form and return it to the school.

Please note: There is no parking available for students on school grounds.

Cromer Campus 2020 Policy for Students Driving Cars to School plus the permission and agreement forms are available on pages 18 & 19 of this Cromer Courier.



Compulsory School Attendance

Information for parents

Education for your child is important and regular attendance at school is essential for your child to achieve their educational best and increase their career and life options. NSW public schools work in partnership with parents to encourage and support regular attendance of children and young people. When your child attends school every day, learning becomes easier and your child will build and maintain friendships with other children.

What are my legal responsibilities?

Education in New South Wales is compulsory for all children between the ages of six years and below the minimum school leaving age. The *Education Act 1990* requires that parents ensure their children of compulsory school age are enrolled at, and regularly attend school, or, are registered with the Board of Studies, Teaching and Educational Standards for homeschooling.

Once enrolled, children are required to attend school each day it is open for students.

The importance of arriving on time

Arriving at school and class on time:

- Ensures that students do not miss out on important learning activities scheduled early in the day
- Helps students learn the importance of punctuality and routine
- Give students time to greet their friends before class
- Reduces classroom disruption

Lateness is recorded as a partial absence and must be explained by parents.

What if my child has to be away from school?

On occasion, your child may need to be absent from school. Justified reasons for student absences may include:

- being sick, or having an infectious disease
- having an unavoidable medical appointment
- being required to attend a recognised religious holiday
- exceptional or urgent family circumstance (e.g. attending a funeral)

Following an absence from school you must ensure that within 7 days you provide your child's school with a verbal or written explanation for the absence. However, if the school has not received an explanation from you within 2 days, the school may contact you to discuss the absence.

Principals may decline to accept an explanation that you have provided if they do not believe the absence is in the best interest of your child. In these circumstances your child's absence would be recorded as unjustified. When this happens the principal will discuss their decision with you and the reasons why.

Principals may request medical certificates or other documentation when frequent or long term absences are explained as being due to illness. Principals may also seek parental permission to speak with medical specialists to obtain information to collaboratively develop a health care plan to support your child. If the request is denied, the principal can record the absences as unjustified.

Travel

Families are encouraged to travel during school holidays. If travel during school term is necessary, discuss this with your child's school principal. An *Application for Extended Leave* may need to be completed. Absences relating to travel will be marked as leave on the roll and therefore contribute to your child's total absences for the year.

In some circumstances students may be eligible to enrol in distance education for travel periods over 50 school days. This should be discussed with your child's school principal.



My child won't go to school. What should I do?

You should contact the principal as soon as possible to discuss the issue and ask for help. Strategies to help improve attendance may include a referral to the school's learning and support team or linking your child with appropriate support networks. The principal may seek further support from the Home School Liaison Program to develop an Attendance Improvement Plan.

What might happen if my child continues to have unacceptable absences?

It is important to understand that the Department of Education and Communities may be required to take further action where children of compulsory school age have recurring numbers of unexplained or unjustified absences from school.

Some of the following actions may be undertaken:

- Compulsory Schooling Conferences

You may be asked, along with your child, to attend a Compulsory Schooling Conference. The conference will help to identify the supports your child may need to have in place so they attend school regularly. The school, parents and agencies will work together to develop an agreed plan (known as Undertakings) to support your child's attendance at school.

- Application to the Children's Court – Compulsory Schooling Order

If your child's attendance at school remains unsatisfactory the Department

may apply to the Children's Court for a *Compulsory Schooling Order*. The Children's Court magistrate may order a Compulsory Schooling Conference to be convened.

- Prosecution in the Local Court

School and Department staff remain committed to working in partnership with you to address the issues which are preventing your child's full participation at school. In circumstances where a breach of compulsory schooling orders occurs further action may be taken against a parent in the Local Court. The result of court action can be the imposition of a community service order or a fine.

What age can my child leave school?

All New South Wales students must complete Year 10 or its equivalent. After Year 10, and up until they reach 17 years of age, there are a range of flexible options for students to complete their schooling.

Working in Partnership

The Department of Education and Communities recognises that working collaboratively with students and their families is the best way to support the regular attendance of students at school.

We look forward to working in partnership with you to support your child to fulfil their life opportunities.

If a student misses as little as 8 days in a school term, by the end of primary school they'll have missed over a year of school.

Further information regarding school attendance can be obtained from the following websites:

Policy, information and brochures:

Please visit the Department of Education's *Policy library*

The school leaving age: Please visit the Department of Education's *Wellbeing and Learning website*

Do you need an interpreter?

Interpreting services are available on request, including for the hearing impaired. The Telephone Interpreter Service is available 24 hours a day, seven days a week on 131 450. You will not be charged for this service.

For further advice and questions contact your educational services team

T 131 536

Learning and Engagement

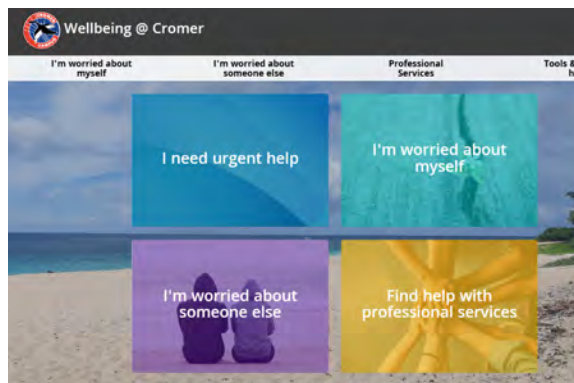
Student Engagement & Interagency Partnerships

T 9244 512

www.dec.nsw.gov.au

© February 2015

NSW Department of Education and Communities



The WELLBEING@ CROMER link is on the front page of the school website.

It contains information, resources and links to support the wellbeing of our students and families.



A further wellbeing initiative is the creation of a whole school Google classroom called:

Wellbeing at NBSC Cromer Campus

The code for this classroom is:

b2dgcwk

This classroom will be regularly updated with resources and is open to students and parents.



Cromer Campus Policy for Students Driving Cars to School

Any student who holds a valid NSW licence and intends to drive to school, either on a regular basis or occasionally, must comply with the school policy and is required to complete the Parent Permission and Student Agreement Form.

Cromer Campus Policy:

1. Students are required to adhere to all road rules and drive in a safe and responsible manner.
2. Student licence details and car make and registration must be recorded with the school.
3. Students are only to use their car for travelling to and from school.
4. Students are not permitted to go to their car during the school day.
5. Students are not to use their cars at lunchtime or in their study periods
6. Students are not permitted to carry other students as passengers to and from school or school events without the written permission of their parent/guardian and the passenger's parent/guardian. The Passenger Permission Form must be completed and submitted to the office.
7. Students are required to notify the school of any passenger who may be travelling with them to and from school as per the Passenger Permission Form.
8. Student drivers, a parent/guardian and, if relevant, the parent/guardian of any passenger, must sign the Parent permission and Student Agreement Form.
9. Cromer Campus does not have space available for student parking. Consequently no student is permitted to park their car within the school grounds.
10. The school's Welfare and Discipline Policy will apply where students fail to meet these obligations. Any unsafe driving behaviour or breaches of road rules will be reported to the police.



Cromer Campus Passenger Permission Form

This form must be completed by a parent/guardian of any student intending to travel to school as a passenger of a student of Cromer Campus who drives a car to and from school unless this student has permission on the original Parent Permission and Student Agreement Form.

I give approval for

Student Passenger's Name: _____

to travel with

Student Driver's Name: _____

We accept all conditions detailed in the Cromer Campus Policy for Students Driving Cars to School.

Parent/Guardian of Student Passenger

Name: _____

Parent/Guardian Signature: _____

Date: _____

Student Passenger

Name: _____

Student Signature: _____

Date: _____

School Approval:

Approved By: _____

Signature: _____

Date: _____

Cromer Campus Students Driving Cars to School Policy 2020



Cromer Campus Parent Permission and Student Agreement Form

***Note:** A photograph of the student's driver licence must be attached to this form.

This form must be completed by any student who intends to drive to school either occasionally or regularly.

Student Name: _____

Car Make/Model: _____

Colour and Registration Number: _____

Note: If the student intends to drive any car other than the one registered on this form, it must also be registered with the school.

Parent Permission

I give permission for _____

to drive to school and, if indicated on the reverse of this form, take the passengers indicated on this form. I am aware of the Cromer Campus Policy for Students Driving Cars to School. **I have seen the completed Cromer Campus Passenger Permission form for the student/s identified on this form.**

Name of Parent: _____ Date: _____

Signature of Parent/Guardian: _____ Date: _____

Student

I agree to adhere to all road rules and drive in a safe and responsible manner and follow the Cromer Campus Policy for Students Driving Cars to School.

Signature of Student:

_____ Date: _____

School Approval:

Approved By: _____

Signature: _____ Date: _____

Names of Students with completed Cromer Campus Passenger Permission forms approved to travel with

_____ Name of Driver.

- 1.
- 2.
- 3.
- 4.





To the School Principal / Headmaster

Conditions of use – Student Opal Card

I write to request your assistance in promoting the importance of using the Student Opal Card correctly.

It is a condition of use that students tap on at the start and tap off at the end of each trip with their Student Opal Card. This is important to ensure accurate patronage data is recorded. This data is used to plan school special and regular route bus services and assists State Transit in ensuring adequate capacity is provided, so students can travel to and from school safely.

Current statistics indicate that many students have failed to tap on or off the Opal readers when travelling. If students do not tap on and off the school bus service, it may appear under-utilised and may be considered for cancellation, based on low passenger numbers.

To assist with our future service planning can you please remind parents and students of this important condition of use so State Transit can continue to provide effective bus services in the future.

For more information and to apply for a School Opal card call 131500 or apply online at <https://www.opal.com.au/en/about-opal/opal-for-school-students>

Thank you for your assistance.

Yours sincerely

Patrick Wu
Customer Operations Manager
Brookvale Depot
State Transit Authority
Ph: 9941 5864
Mob: 0429994138
Patrick_wu@sta.nsw.gov.au



School travel update

Application information

Information for parents, guardians and students

Our school has partnered with Transport for NSW to use the new online School Portal for endorsing school travel applications.

You are now able to manage all your school travel needs online including applying for school travel passes and tracking the status of your application.

The application process has also been simplified so that a new or updated application for school travel passes is only needed when a student is:

- applying for a school travel pass for the first time
- requesting an additional pass as a result of a new shared parental responsibility situation (e.g. joint custody).
- changing school or campus
- changing home address
- receiving an expiry notification
- repeating a school year
- changing their name
- requesting a new transport operator.

This means students who are progressing to year 3 and year 7 only need to reapply if they are changing circumstances.

Students who are not residents and are temporarily in Australia can also provide their visa subclass number and exchange program (if prompted) when applying online, making the application and approval process much faster.

Parents, guardians and students can apply or update their details online at:

www.transportnsw.info/school-students

If you do not have access to the internet contact 131 500 for assistance.