



Cromer Courier

CROMER CAMPUS NEWSLETTER

Respect • Responsibility • Success



/cromercampus



#cromercampus



@cromercampus

<http://www.nbsscromer-h.schools.nsw.edu.au>

nbsccromer-h.school@det.nsw.edu.au

Telephone: 9981 1155

120 South Creek Road CROMER NSW 2099

Fax: 9982 5398

Open Night 2020

(Page 6)

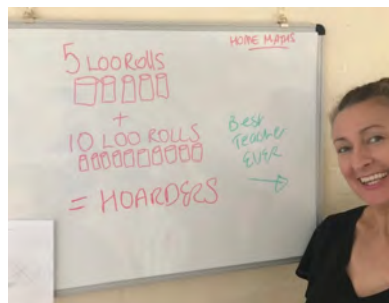


FROM THE PRINCIPAL

**HOME SCHOOL ESTABLISHED –
THE SAUNDERS HOUSEHOLD IS
READY TO LEARN**



By **JUSTIN HONG**
Principal
NBSC Cromer Campus



I applaud our P&C president Mrs Melanie Saunders for her efforts in teaching her daughter mathematics as seen in the photo. My mathematics teachers have critiqued her whiteboard work and mathematical equation. The teachers all agree that her equation is mathematically correct, but none of us could find "Loo Rolls" mentioned in the Year 7 syllabus. Mrs Saunders can I ask that your future teaching is focused on the syllabus.

Of course these comments are made in jest. On a serious note I want to sincerely thank Mrs Saunders and every parent who has now been thrust into a direct schooling role in their homes. My staff and I are extremely grateful for the positive comments so many have made on our Facebook page and through email. We even received a bouquet of flowers today delivered to our front office. My teachers and I really appreciate this; what a great way to show your thanks and in the process support a local small business. Well done and thanks to the Cromback family.

IN THIS ISSUE

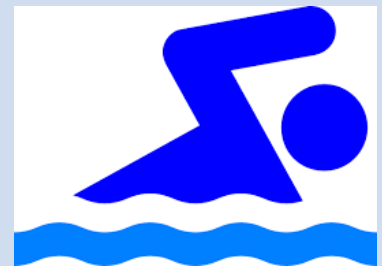
Coolmaths@Cromer (Page 9)



World's Greatest Headshave
(Page 10)



Warringah Zone Results
(Page 5)



PLUS..

Wellbeing @ Cromer (P3)
Students Driving Cars to
School Policy (P5 and P13)
PBL at Cromer (P8)
School Bus Changes (P8)
Cromer Year 5 Enrichment (P12)

.....

Principal's report continued...

I want to assure you that my teachers are working extremely hard to continue providing online/remote resources that engage and teach your children as they remain away from school.

Share Your Remote Learning Stories

In the spirit of supporting one another throughout our NBSC Cromer Campus community, we would love to hear any further good news stories, positive feedback, amusing anecdotes that relate to your child's remote learning journey. We are planning to publish these with photos in our next newsletter early next term. It is likely we will have a page for each year group. Mrs Saunders has set the example above and we would love contributions from all families. If you have something, please send it to us via the school email nbsccromer-h-school@det.nsw.edu.au with the subject line:

"SCHOOL NEWSLETTER CONTRIBUTION – (enter your child's school year ie – "Year 8")"

Year 12 Students and the HSC

There have been a number of enquiries about the HSC and ongoing schooling, so I thought I would clarify the situation as it currently stands. The NESA Board met earlier this week in an attempt to address areas of concern. A media release was posted 24th March, [link](#)

In summary:

- NESA recognises it is unprecedented times and reinforced that the HSC will still go ahead, however, in which particular format is unknown at this time.
- The HSC will still provide access to university, further education and employment.
- You are encouraged to continue your studies by:
 - completing your online classes
 - completing assessments and
 - making contact with your teachers.
- Assessment practices and procedures may also change and we will inform you if they are adjusted. For the moment, keep working on your current tasks. If unsure please contact your teacher.
- During these uncertain times please know that assessment tasks could become critical to your HSC.
- Continue to make progress on your Major Works where possible. Any questions regarding access please direct to your class teacher.

The NESA Board is yet to make a decision on a number of areas including:

- Possible variations to assessment policies and practices;
- Work placement for VET courses;
- Group major works eg music;
- Students completing projects and Major Works.

For students who are seeking university placement in 2021 the following information was released by the University Admission Centre (UAC):

Year 12 students will be emailed their UAC PIN on 1 April. Further advice regarding special arrangements for Year 12 students will be made available in the coming weeks and months as we work with universities, NESA and other stakeholders to ensure that no student is disadvantaged in relation to university entry in 2021.

We will continue to communicate updates to you and are here to help in any way we can. As more information is released we will keep you informed.

Appropriate On-Line Behaviour and Digital Citizenship

Now that our delivery of education is solely online this is more important than ever. I see this as an opportunity to reinforce and ensure that our children are safe, effective and responsible citizens in the online world. I recommend the department's Digital Citizenship website. There are some amazing resources here that cover online safety, etiquette, how to spot fake news/unreliable information and many other topics. The site can be found at the following link:

<https://www.digitalcitizenship.nsw.edu.au/>

Another good resource which contains a very tidy list of the dos and don'ts for online communication is found at the following link:

<https://www.childnet.com/blog/online-etiquette-or-netiquette-the-dos-and-donts-of-online-communication->

NBSC Cromer Campus Library is Now Online

Our library is not closed - thanks to the schools amazing librarian and technology guru Ms Allison Black our library has moved many of its facilities into an online platform. Students can borrow e-books from our library, check out subject specific resources, and get technical help. There are how-to guides and students can access links to other important resources that will help students learn and complete many of their school tasks. This is a brand new resource sent out this week so content is still being added but this is a great platform that is only going to grow from here. Link below:

<https://cromerlibrary.wixsite.com/home/flexible>

Loan Laptops and Dongles

The Department of Education are working extremely hard to provide schools with additional devices to support families without internet or enough devices for their children. I submitted an order last Thursday based on email requests and other information we had from families requesting assistance. Supplies are limited but the first delivery of these is expected early next term. Senior students who are preparing for their HSC have been given the highest priority. Devices will need to be picked up from the school and we will contact you when the devices arrive to arrange a suitable pickup time.

Look After One Another

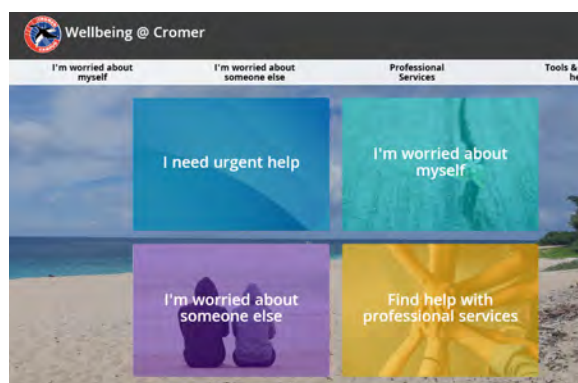
I wish all students and their families the very best of health over the coming weeks and months. This crisis will end, and I look forward to that time when we can resume normal operation, get back to on-site classes, extra-curricular activities and all of the other incredible things we do together as a school community. Take care of each other.

Happy Easter

I applaud the entire community for the strength you have all shown during this unprecedented time. I would like to acknowledge and add my best wishes to the many families that are suffering due to changes in employment and other hardships so many are facing at the moment. I would like to again assure all families and students that the school and its staff are working extremely hard to assist in ensuring that students remain active in their education. I encourage everybody to read the email sent out by my two Deputy Principals Ms Lomas and Mr Taylor recently which had a clear message of support for parents about workload and other issues. I encourage and thank every member of our community for continuing to do their bit in following isolation and health protocols. This will ensure a timely end of this crisis so that we can all return to normality. I wish everybody a safe and happy Easter.

Kind regards

Justin Hong
Principal



The WELLBEING@CROMER link is on the front page of the school website.

It contains information, resources and links to support the wellbeing of our students and families.



A further wellbeing initiative is the creation of a whole school Google classroom called:

Wellbeing at NBSC Cromer Campus

The code for this classroom is: **b2dgcwk**

This classroom will be regularly updated with resources and is open to students and parents.

An important message about our response to COVID-19

The health and safety of our staff and students is of the utmost importance to our school.

We have implemented a range of measures to help keep our school healthy and reduce the spread of infection and illness. Some simple measures we ask that you adopt include:



Before entering our school

If you have been unwell, with symptoms such as a high temperature, cough, sore throat, and/or shortness of breath, please don't visit our school. Please contact our office to speak to one of our staff.

Ph:



Increase hygiene practices

We request that all staff, students and visitors follow increased personal hygiene practices through regular and thorough hand washing and coughing or sneezing into your elbow or tissue, and disposing of tissues.



Maintaining a healthy distance

For the health and wellbeing of our staff and students, please stand at least **1.5 metres** apart while waiting in our office. Our visitors are encouraged to wait outside for their turn to speak with our office staff. We are also applying social distancing requirements across all areas of the school as is reasonable and practical.



Support for our staff

We appreciate your patience and support while we work together to minimise the impact of COVID 19 in our community.

We know this is a difficult time and we are doing all we can to support our staff and students.

Search Inside the Department for up-to-date information and resources.

Wellbeing and Safety of Cromer Campus Student Drivers and their Passengers



As is the case with many secondary schools, more and more of our senior students are driving to and from school. While most young drivers are careful, safety conscious and considerate when driving, they are one of the most vulnerable road user groups. Travelling with teenage passengers adds to the risk for these young drivers.

With this in mind, Cromer Campus has a responsibility to take all reasonable measures to ensure the wellbeing and safety of students. Our *Student Driving Policy* outlines what we expect from student drivers and their passengers. A copy of the policy is available on our school web site or can be obtained from the school office.

A *Parent Permission and Student Agreement Form* for both drivers and passengers can also be found on the school web site or obtained from the school office. All student drivers and parents/guardians are required to sign this form and return it to the school.

Please note: There is no parking available for students on school grounds.

Cromer Campus 2020 Policy for Students Driving Cars to School plus the permission and agreement forms are shown on page 12 of this Cromer Courier.



Warringah Zone Swimming Carnival 2020

Congratulations to all our swimmers at the Warringah Zone Swimming Championships, which took place on Thursday 12th March at the WAC. We had over 50 swimmers from Cromer swim at the carnival. A fabulous effort by all involved. Thanks to Miss Pontifex and Mrs Gale for organising the event and to all the staff, WASA officials and student helpers for making the day the success that it was.

The following Cromer students made it through to the Sydney North Carnival (which was scheduled to take place on Tuesday 24th March but was postponed due to the current health crisis).

Noah Cassell	Ryder Gordon
Sam Clark	Molly Jackson
Noa Daly	Kenju Nakamura
Jade Day-Jacques	Zoe Scholtens
Nicolas Gallardo	Nathan Williams
Kayla Ginsburg	



CROMER CAMPUS

Open Night 2020



Mr Peter Laybutt - Maths

CROMER CAMPUS

Open Night 2020



PBL at Cromer Campus ☺

Respect • Responsibility • Success

While the National Day of Action against Bullying and Violence (NDA) scheduled for Friday 20 March 2020 has been temporarily postponed, every day is **BULLYING NO WAY** day at Cromer Campus!



If you would like to know more about PBL at Cromer Campus, please talk to Ms Fiona Bird, Head Teacher Welfare.

School bus service changes



Route 677n

Commencing Term II 2020
27th April 2020

To better meet the travel needs of students at Balgowlah Boys High the 677n trip commencing from Warriewood Square at 7:55am will commence at 7:48am from 27th April 2019.

Students are reminded of the requirement to 'tap on' and 'tap off' with a valid School or Child Opal card on every bus boarded as part of their journey.

State Transit and Transport for NSW will be closely monitoring Opal card usage on all school services to ensure buses have been allocated to meet customer demand.

For your complete timetable, go to transportnsw.info and click on the School Students link.

Visit transportnsw.info
Call 131 500 TTY 1800 637 500



School bus service changes



Route 684n

Commencing Term II 2020
27th April 2020

To better meet the travel needs of students at Balgowlah Boys High the 684n trip commencing from St Lukes at 8:17 am will commence at 8:10 am from 27th April 2019.

The 684n trip commencing from Collaroy Plateau at 7:35 am via St Lukes at 8:07 am to Balgowlah Boys High will remain unchanged.

Students are reminded of the requirement to 'tap on' and 'tap off' with a valid School or Child Opal card on every bus boarded as part of their journey.

State Transit and Transport for NSW will be closely monitoring Opal card usage on all school services to ensure buses have been allocated to meet customer demand.

For your complete timetable, go to transportnsw.info and click on the School Students link.

Visit transportnsw.info
Call 131 500 TTY 1800 637 500



Coolmaths@cromercampus

How does the internet work???



Recently all students at Cromer Campus moved to Online Learning!

During the Spanish Flu Epidemic back in 1919, this would not have been possible – the internet did not exist!

So how did the internet come about???

“...Long before the technology existed to actually build the internet, many scientists had already anticipated the existence of worldwide networks of information. Nikola Tesla toyed with the idea of a “world wireless system” in the early 1900s, and visionary thinkers like Paul Otlet and Vannevar Bush conceived of mechanized, searchable storage systems of books and media in the 1930s and 1940s.

The first workable prototype of the Internet came in the late 1960s with the creation of ARPANET, the **Advanced Research Projects Agency Network**, funded by the U.S. Department of Defense,



Online learning at Cromer Campus ☺

ARPANET used packet switching to allow multiple computers to communicate on a single network. On October 29, 1969, ARPAnet delivered its first message: a “node-to-node” communication from one computer to another. (The first computer was located in a research lab at UCLA and the second was at Stanford; each one was the size of a small house.) The message—“LOGIN”—was short and simple, but it crashed the fledgling ARPA network anyway: The Stanford computer only received the note’s first two letters. The technology continued to grow in the 1970s after scientists Robert Kahn and Vinton Cerf developed Transmission Control Protocol and Internet Protocol, or TCP/IP, a communications model that set standards for how data could be transmitted between multiple networks.

ARPANET adopted TCP/IP on January 1, 1983, and from there researchers began to assemble the “network of networks” that became the modern Internet. The online world then took on a more recognizable form in 1990, when computer scientist Tim Berners-Lee invented the World Wide Web. While it’s often confused with the internet itself, the web is actually just the most common means of accessing data online in the form of websites and hyperlinks. The web helped popularize the internet among the public, and served as a crucial step in developing the vast trove of information that most of us now access on a daily basis” (Source: Evan Andrews, 2019, <https://www.history.com/author/evan-andrews>)

Problem of the week!

Deep inside your computer there are only “Ones” and “Zeros” - it’s called Binary!

On the eve of 31 December 1999, computer scientists were worried that the Internet could breakdown at midnight because of the Y2K bug (Google it!). Your challenge this week is to calculate the number of days from 01/01/0000 to 31/12/1999 and then convert this number to Binary! Post your solution to:

Coolmaths@cromercampus Google Class Code **5tif4bq** -The \$20 iTunes voucher is up for grabs!!

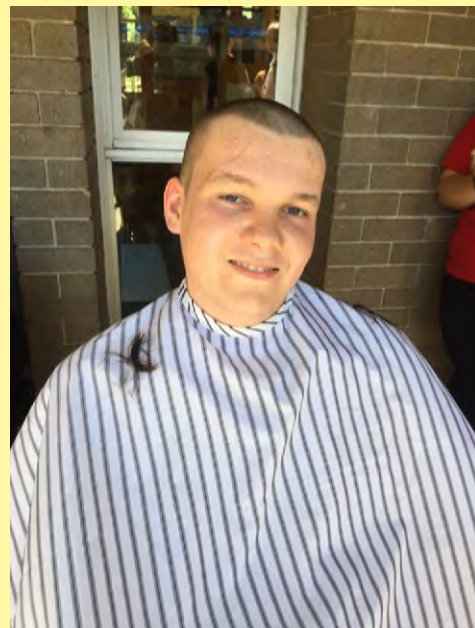
WORLD'S GREATEST HEADSHAVE 2020



Well done to the students who participated in the World's Greatest Headshave recently. All proceeds go towards blood cancer research.



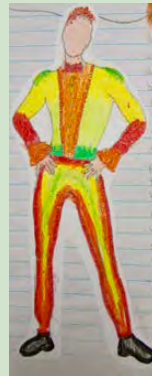
WORLD'S GREATEST HEADSHAVE 2020



Year 5 Enrichment Program

This term our Primary Enrichment Program began with a bang. We were full steam ahead brainstorming, challenging, questioning, exploring, experimenting, investigating and predicting in our fantastic interschool group.

Our first workshop involved challenging our perspective and looking at the world through the eyes of a villain. We dissected known narratives and discussed what makes a good villain. The students were then able to create their own villains. We were introduced to Villains such as Maxadon, Ghastly the Ghost, Shadow, Techno, One Shot, Death Fire, Ravager, Tango Tim, Reptillian and Scarlet Heart just to name a few



Our 'Rock On' workshop had us identifying sedimentary, igneous and metamorphic rocks, looking at fossils that were millions of years old and exploring the shapes and properties of crystals.



Finally, we visited Many Dam. Our guide taught us so much about how scientists test the health of our environment and the importance of biodiversity.



What a fantastic resource right in the heart of our community.

We had such a successful start to the program, both the students and I are really looking forward to its return.

Sarah Horton CCEP Teacher



Cromer Campus Policy for Students Driving Cars to School

Any student who holds a valid NSW licence and intends to drive to school, either on a regular basis or occasionally, must comply with the school policy and is required to complete the Parent Permission and Student Agreement Form.

Cromer Campus Policy:

1. Students are required to adhere to all road rules and drive in a safe and responsible manner.
2. Student licence details and car make and registration must be recorded with the school.
3. Students are only to use their car for travelling to and from school.
4. Students are not permitted to go to their car during the school day.
5. Students are not to use their cars at lunchtime or in their study periods
6. Students are not permitted to carry other students as passengers to and from school or school events without the written permission of their parent/guardian and the passenger's parent/guardian. The Passenger Permission Form must be completed and submitted to the office.
7. Students are required to notify the school of any passenger who may be travelling with them to and from school as per the Passenger Permission Form.
8. Student drivers, a parent/guardian and, if relevant, the parent/guardian of any passenger, must sign the Parent permission and Student Agreement Form.
9. Cromer Campus does not have space available for student parking. Consequently no student is permitted to park their car within the school grounds.
10. The school's Welfare and Discipline Policy will apply where students fail to meet these obligations. Any unsafe driving behaviour or breaches of road rules will be reported to the police.



Cromer Campus Passenger Permission Form

This form must be completed by a parent/guardian of any student intending to travel to school as a passenger of a student of Cromer Campus who drives a car to and from school unless this student has permission on the original Parent Permission and Student Agreement Form.

I give approval for

Student Passenger's Name: _____

to travel with

Student Driver's Name: _____

We accept all conditions detailed in the Cromer Campus Policy for Students Driving Cars to School.

Parent/Guardian of Student Passenger

Name: _____

Parent/Guardian Signature: _____

Date: _____

Student Passenger

Name: _____

Student Signature: _____

Date: _____

School Approval:

Approved By: _____

Signature: _____

Date: _____

Cromer Campus Students Driving Cars to School Policy 2020



Cromer Campus Parent Permission and Student Agreement Form

***Note:** A photograph of the student's driver licence must be attached to this form.

This form must be completed by any student who intends to drive to school either occasionally or regularly.

Student Name: _____

Car Make/Model: _____

Colour and Registration Number: _____

Note: If the student intends to drive any car other than the one registered on this form, it must also be registered with the school.

Parent Permission

I give permission for _____

to drive to school and, if indicated on the reverse of this form, take the passengers indicated on this form. I am aware of the Cromer Campus Policy for Students Driving Cars to School. **I have seen the completed Cromer Campus Passenger Permission form for the student/s identified on this form.**

Name of Parent: _____ Date: _____

Signature of Parent/Guardian: _____ Date: _____

Student

I agree to adhere to all road rules and drive in a safe and responsible manner and follow the Cromer Campus Policy for Students Driving Cars to School.

Signature of Student:

_____ Date: _____

School Approval:

Approved By: _____

Signature: _____ Date: _____

Names of Students with completed Cromer Campus Passenger Permission forms approved to travel with

_____ Name of Driver.

- 1.
- 2.
- 3.
- 4.



18 March 2019

To the School Principal / Headmaster

Conditions of use – Student Opal Card

I write to request your assistance in promoting the importance of using the Student Opal Card correctly.

It is a condition of use that students tap on at the start and tap off at the end of each trip with their Student Opal Card. This is important to ensure accurate patronage data is recorded. This data is used to plan school special and regular route bus services and assists State Transit in ensuring adequate capacity is provided, so students can travel to and from school safely.

Current statistics indicate that many students have failed to tap on or off the Opal readers when travelling. If students do not tap on and off the school bus service, it may appear under-utilised and may be considered for cancellation, based on low passenger numbers.

To assist with our future service planning can you please remind parents and students of this important condition of use so State Transit can continue to provide effective bus services in the future.

For more information and to apply for a School Opal card call 131500 or apply online at <https://www.opal.com.au/en/about-opal/opal-for-school-students>

Thank you for your assistance.

Yours sincerely

Patrick Wu
Customer Operations Manager
Brookvale Depot
State Transit Authority
Ph: 9941 5864
Mob: 0429994138
Patrick_wu@sta.nsw.gov.au



School travel update

Application information - June 2017

Information for parents, guardians and students

Our school has partnered with Transport for NSW to use the new online School Portal for endorsing school travel applications.

You are now able to manage all your school travel needs online including applying for school travel passes and tracking the status of your application.

The application process has also been simplified so that a new or updated application for school travel passes is only needed when a student is:

- applying for a school travel pass for the first time
- requesting an additional pass as a result of a new shared parental responsibility situation (e.g. joint custody).
- changing school or campus
- changing home address
- receiving an expiry notification
- repeating a school year
- changing their name
- requesting a new transport operator.

This means students who are progressing to year 3 and year 7 only need to reapply if they are changing circumstances.

Students who are not residents and are temporarily in Australia can also provide their visa subclass number and exchange program (if prompted) when applying online, making the application and approval process much faster.

Parents, guardians and students can apply or update their details online at:

www.transportnsw.info/school-students

If you do not have access to the internet contact 131 500 for assistance.

EDROLO AT CROMER CAMPUS

Edrolo is an excellent online study program and exam resource that is being utilised across a range of HSC and Preliminary subjects in 2019/2020

Edrolo is a comprehensive, premium, online, interactive video and exam simulation resource for the HSC/Preliminary. Edrolo is currently used by over 300 schools and 50,000 students, and we are confident it is an extremely valuable investment, providing our students with a differentiated and targeted level of support as they prepare for their most important assessments and examinations.

What exactly is Edrolo?

Edrolo is an extensive study and exam revision resource crafted by master HSC teachers (including exam assessors, textbook authors, and department heads). Edrolo is built in accordance with the NESA Syllabus to guide students through their coursework during the year and final exam preparation.

Edrolo is broken up into two key elements:

- **Theory Master:** Interactive video courses mapped to each subject's syllabus and presented by proven expert teachers. Each subject's Theory Master has hundreds of videos and interactive quiz questions for students to learn from and test themselves on.
- **Exam Master:** Online practice exams offering video solutions for every single exam question incorporating unique insights and diagnostic study tools enabling students to identify and target their individual areas of weakness.

How will students use Edrolo?

Our teachers will guide students to make full use of Edrolo in a range of ways across the year, including

- holiday homework;
- pre-class work;
- post-class consolidation;
- assessment preparation; and,
- exam revision.

How will students access Edrolo?

Edrolo is accessed simply by logging in to the Edrolo website: edrolo.com.au. Every student has been provided with a unique account that helps to track their progress throughout each subject. Students can access Edrolo anywhere there is an internet connection using their device of choice: laptop, PC, tablet or smartphone. There is no downloading of applications or software.

What can you do to support your HSC student?

We recommend you simply start by engaging in conversation about their Edrolo account if you notice they are struggling with their coursework, or don't know what to do next in their study program.

SEE THE PARENT INFORMATION VIDEO ON OUR SCHOOL WEBSITE AND PARENT PORTAL.

Compulsory School Attendance

Information for parents

Education for your child is important and regular attendance at school is essential for your child to achieve their educational best and increase their career and life options. NSW public schools work in partnership with parents to encourage and support regular attendance of children and young people. When your child attends school every day, learning becomes easier and your child will build and maintain friendships with other children.

What are my legal responsibilities?

Education in New South Wales is compulsory for all children between the ages of six years and below the minimum school leaving age. The *Education Act 1990* requires that parents ensure their children of compulsory school age are enrolled at, and regularly attend school, or, are registered with the Board of Studies, Teaching and Educational Standards for homeschooling.

Once enrolled, children are required to attend school each day it is open for students.

The importance of arriving on time

Arriving at school and class on time:

- Ensures that students do not miss out on important learning activities scheduled early in the day
- Helps students learn the importance of punctuality and routine
- Give students time to greet their friends before class
- Reduces classroom disruption

Lateness is recorded as a partial absence and must be explained by parents.

What if my child has to be away from school?

On occasion, your child may need to be absent from school. Justified reasons for student absences may include:

- being sick, or having an infectious disease
- having an unavoidable medical appointment
- being required to attend a recognised religious holiday
- exceptional or urgent family circumstance (e.g. attending a funeral)

Following an absence from school you must ensure that within 7 days you provide your child's school with a verbal or written explanation for the absence. However, if the school has not received an explanation from you within 2 days, the school may contact you to discuss the absence.

Principals may decline to accept an explanation that you have provided if they do not believe the absence is in the best interest of your child. In these circumstances your child's absence would be recorded as unjustified. When this happens the principal will discuss their decision with you and the reasons why.

Principals may request medical certificates or other documentation when frequent or long term absences are explained as being due to illness. Principals may also seek parental permission to speak with medical specialists to obtain information to collaboratively develop a health care plan to support your child. If the request is denied, the principal can record the absences as unjustified.

Travel

Families are encouraged to travel during school holidays. If travel during school term is necessary, discuss this with your child's school principal. An *Application for Extended Leave* may need to be completed. Absences relating to travel will be marked as leave on the roll and therefore contribute to your child's total absences for the year.

In some circumstances students may be eligible to enrol in distance education for travel periods over 50 school days. This should be discussed with your child's school principal.



My child won't go to school. What should I do?

You should contact the principal as soon as possible to discuss the issue and ask for help. Strategies to help improve attendance may include a referral to the school's learning and support team or linking your child with appropriate support networks. The principal may seek further support from the Home School Liaison Program to develop an Attendance Improvement Plan.

What might happen if my child continues to have unacceptable absences?

It is important to understand that the Department of Education and Communities may be required to take further action where children of compulsory school age have recurring numbers of unexplained or unjustified absences from school.

Some of the following actions may be undertaken:

- Compulsory Schooling Conferences

You may be asked, along with your child, to attend a Compulsory Schooling Conference. The conference will help to identify the supports your child may need to have in place so they attend school regularly. The school, parents and agencies will work together to develop an agreed plan (known as Undertakings) to support your child's attendance at school.

- Application to the Children's Court – Compulsory Schooling Order

If your child's attendance at school remains unsatisfactory the Department

may apply to the Children's Court for a *Compulsory Schooling Order*. The Children's Court magistrate may order a Compulsory Schooling Conference to be convened.

- Prosecution in the Local Court

School and Department staff remain committed to working in partnership with you to address the issues which are preventing your child's full participation at school. In circumstances where a breach of compulsory schooling orders occurs further action may be taken against a parent in the Local Court. The result of court action can be the imposition of a community service order or a fine.

What age can my child leave school?

All New South Wales students must complete Year 10 or its equivalent. After Year 10, and up until they reach 17 years of age, there are a range of flexible options for students to complete their schooling.

Working in Partnership

The Department of Education and Communities recognises that working collaboratively with students and their families is the best way to support the regular attendance of students at school.

We look forward to working in partnership with you to support your child to fulfil their life opportunities.

If a student misses as little as 8 days in a school term, by the end of primary school they'll have missed over a year of school.

Further information regarding school attendance can be obtained from the following websites:

Policy, information and brochures:

Please visit the Department of Education's *Policy Library*

The school leaving age: Please visit the Department of Education's *Wellbeing and Learning* website

Do you need an interpreter?

Interpreting services are available on request, including for the hearing impaired. The Telephone Interpreter Service is available 24 hours a day, seven days a week on 131 450. You will not be charged for this service.

For further advice and questions contact your educational services team

T 131 536

Learning and Engagement

Student Engagement & Interagency Partnerships

T 9244 512

www.dec.nsw.gov.au

© February 2015

NSW Department of Education and Communities

